

BRIDGER FOOTHILLS MT-CGF-000214

Operations Map 9/14/2020

Perimeter as of 9/7/20 @ 2100 8,224 ac.

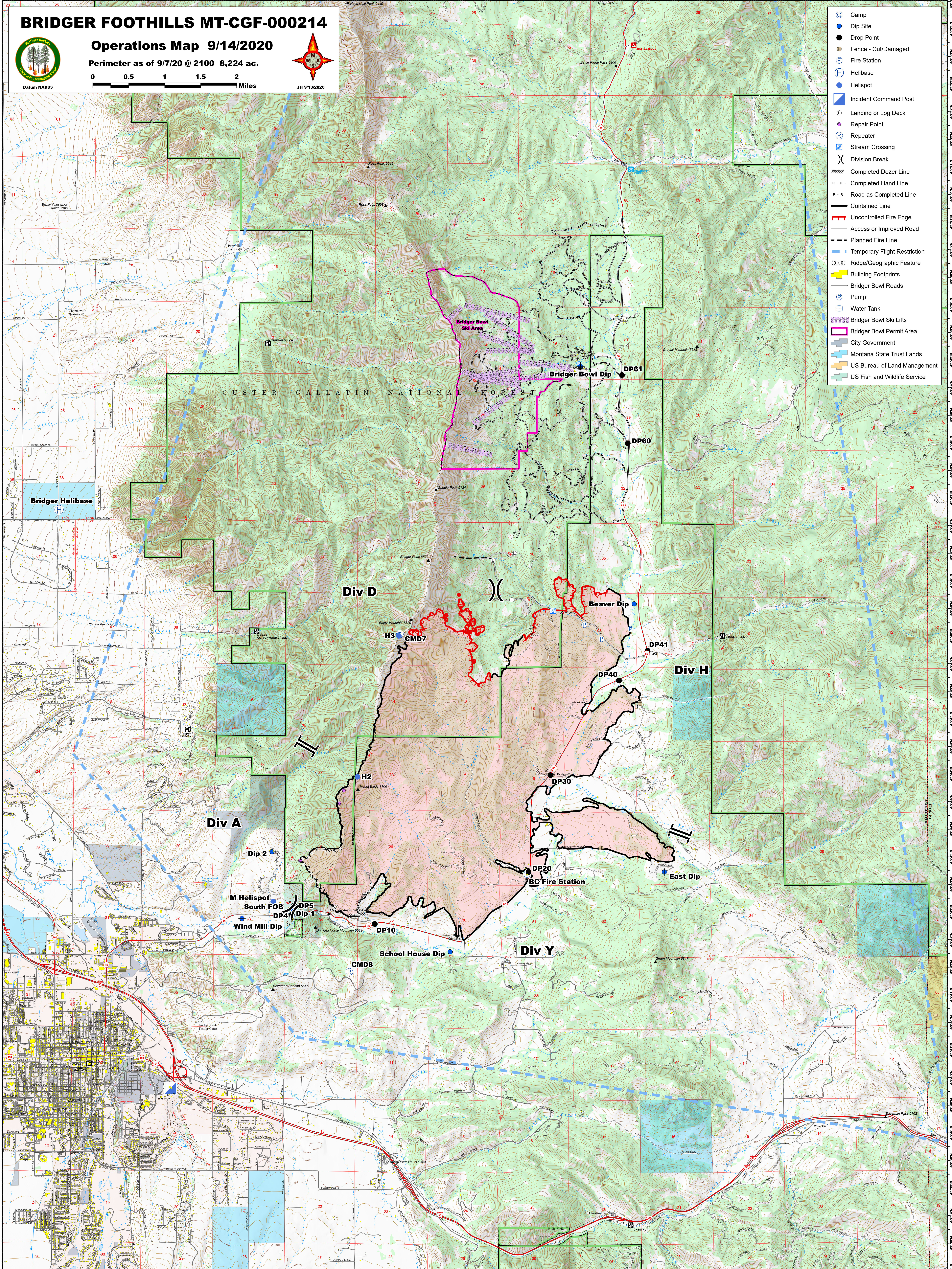


0 0.5 1 1.5 2 Miles

JH 9/13/2020

Datum NAD83

- ⊙ Camp
- Dip Site
- Drop Point
- ⊕ Fence - Cut/Damaged
- ⊕ Fire Station
- ⊕ Helibase
- ⊕ Helispot
- ⊕ Incident Command Post
- ⊕ Landing or Log Deck
- ⊕ Repair Point
- ⊕ Repeater
- ⊕ Stream Crossing
- ⊕ Division Break
- ⊕ Completed Dozer Line
- ⊕ Completed Hand Line
- ⊕ Road as Completed Line
- ⊕ Contained Line
- ⊕ Uncontrolled Fire Edge
- ⊕ Access or Improved Road
- ⊕ Planned Fire Line
- ⊕ Temporary Flight Restriction
- ⊕ Ridge/Geographic Feature
- ⊕ Building Footprints
- ⊕ Bridger Bowl Roads
- ⊕ Pump
- ⊕ Water Tank
- ⊕ Bridger Bowl Ski Lifts
- ⊕ Bridger Bowl Permit Area
- ⊕ City Government
- ⊕ Montana State Trust Lands
- ⊕ US Bureau of Land Management
- ⊕ US Fish and Wildlife Service



Bridger Helibase

Bridger Bowl Ski Area

Bridger Bowl Dip

DP61

DP60

Div D

Div H

Div A

Div Y

Dip 2

M Helispot

South FOB

Wind Mill Dip

DP4

DP5

Dip 1

School House Dip

CMD8

DP30

BC Fire Station

DP40

DP41

Beaver Dip

East Dip

DP20

DP10

DP10

DP10

DP10

DP10

DP10

DP10

DP10

DP10

DP10

DP10

DP10

DP10

DP10