

BRIDGER FOOTHILLS MT-CGF-000214

Operations Map 9/17/2020

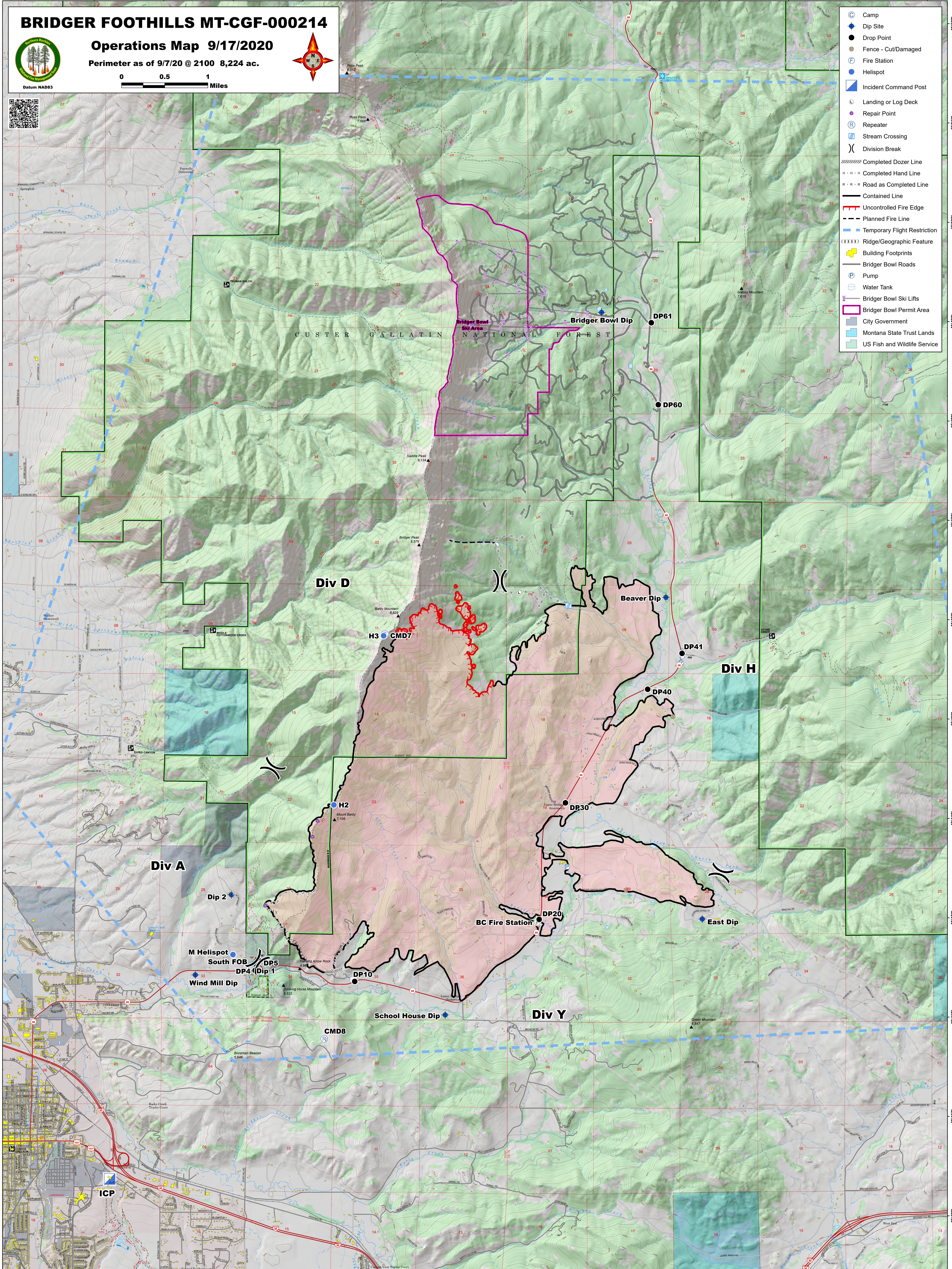
Perimeter as of 9/7/20 @ 2100 8,224 ac.



0 0.5 1 Miles



- Camp
- Dip Site
- Drop Point
- Fence - Cut/Damaged
- Fire Station
- Helispot
- Incident Command Post
- Landing or Log Deck
- Repair Point
- Repeater
- Stream Crossing
- Division Break
- Completed Dozer Line
- Completed Hand Line
- Road as Completed Line
- Contained Line
- Uncontrolled Fire Edge
- Planned Fire Line
- Temporary Flight Restriction
- Ridge/Geographic Feature
- Building Footprints
- Bridger Bowl Roads
- Pump
- Water Tank
- Bridger Bowl Ski Lifts
- Bridger Bowl Permit Area
- City Government
- Montana State Trust Lands
- US Fish and Wildlife Service



Div D

Div H

Div A

Div Y

School House Dip

BC Fire Station

Beaver Dip

East Dip

M Helispot

South FOB

Wind Mill Dip

ICP

H3 CMD7

H2

CMD8

Bridger Bowl Dip

DP41

DP40

DR30

DP20

DP10

DP5

DP4 (Dip 1)

DP61

DP60

Ross Peak 8,212

Ross Pass 7,998

Saddle Peak 9,134

Bridger Peak 8,571

Baldy Mountain 8,822

Mount Baldy 7,106

Drinking Horse Mountain 5,522

Boreman Beacon 5,645

Green Mountain 6,847

Wood Peak 6,211

Wood Peak 6,211

