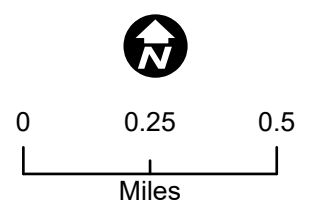
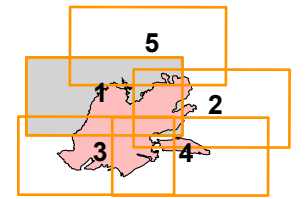


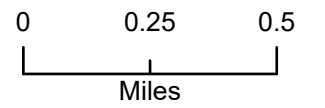
IAP Map
 Bridger Foothills
 MT-CGF-000214
 09/ 20 - 22 /2020 Day



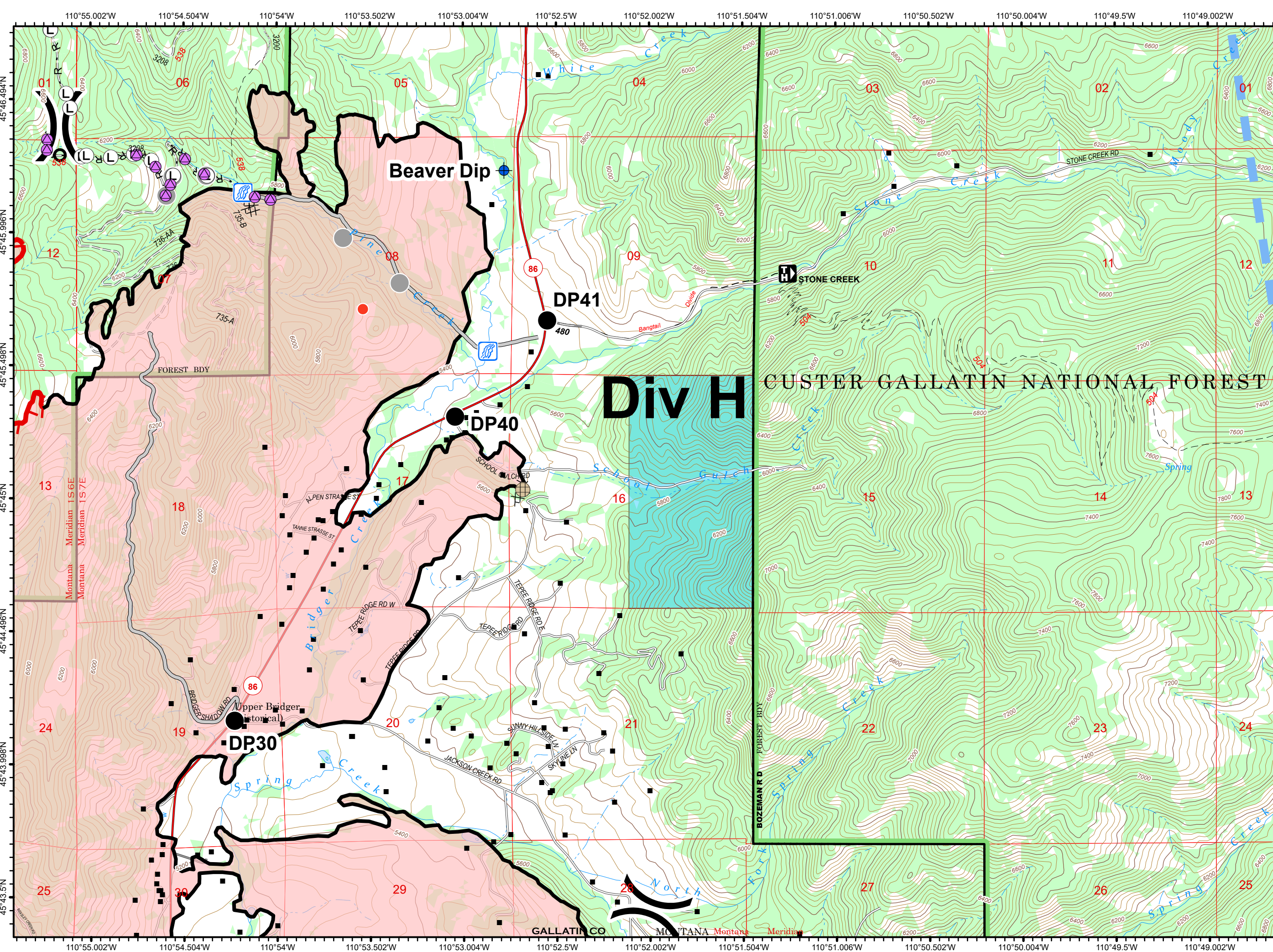
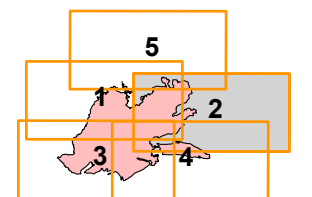
- Culvert
- Drop Point
- Helispot
- Hot Spot
- Landing or Log Deck
- Repair Point
- Repeater
- Stream Crossing
- Other
- Division Break
- Uncontrolled Fire Edge
- Contained Line
- Completed Dozer Line
- Road as Completed Line
- Access or Improved Road
- Planned Fire Line
- Other
- Wildfire Daily Fire Perimeter
- City Government
- Montana State Trust Lands
- US Bureau of Land Management
- US Fish and Wildlife Service
- Structures



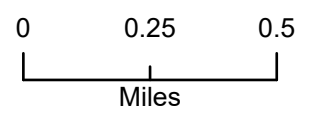
IAP Map
 Bridger Foothills
 MT-CGF-000214
 09/ 20 - 22 /2020 Day



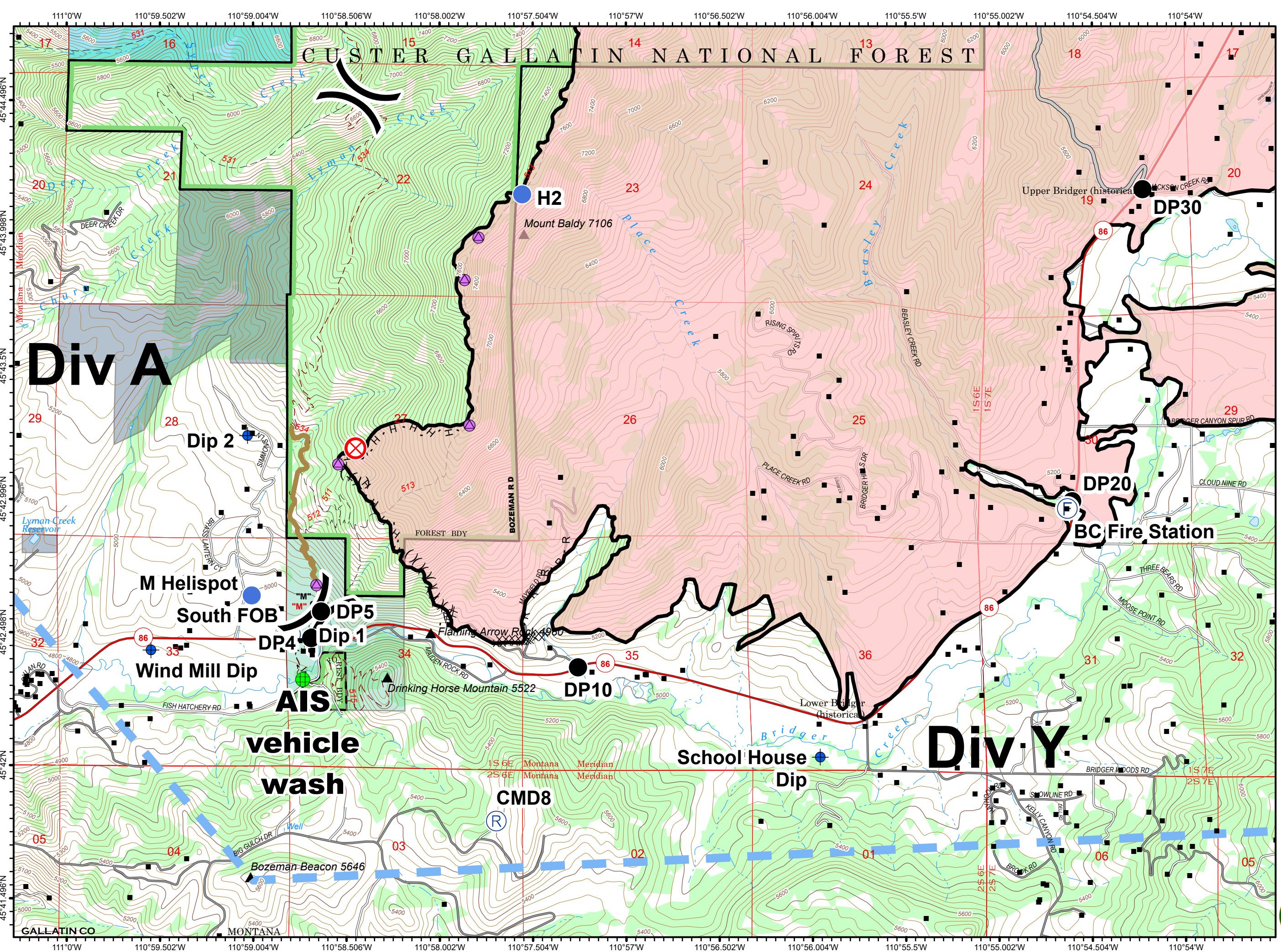
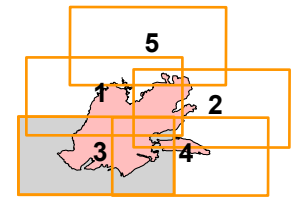
- Culvert
- Dip Site
- Drop Point
- Fence - Cut/Damaged
- Hot Spot
- Landing or Log Deck
- Repair Point
- Stream Crossing
- Other
- Division Break
- Uncontrolled Fire Edge
- Contained Line
- Completed Dozer Line
- Road as Completed Line
- Access or Improved Road
- Planned Fire Line
- Temporary Flight Restriction
- Wildfire Daily Fire Perimeter
- City Government
- Montana State Trust Lands
- US Bureau of Land Management
- US Fish and Wildlife Service
- Structures

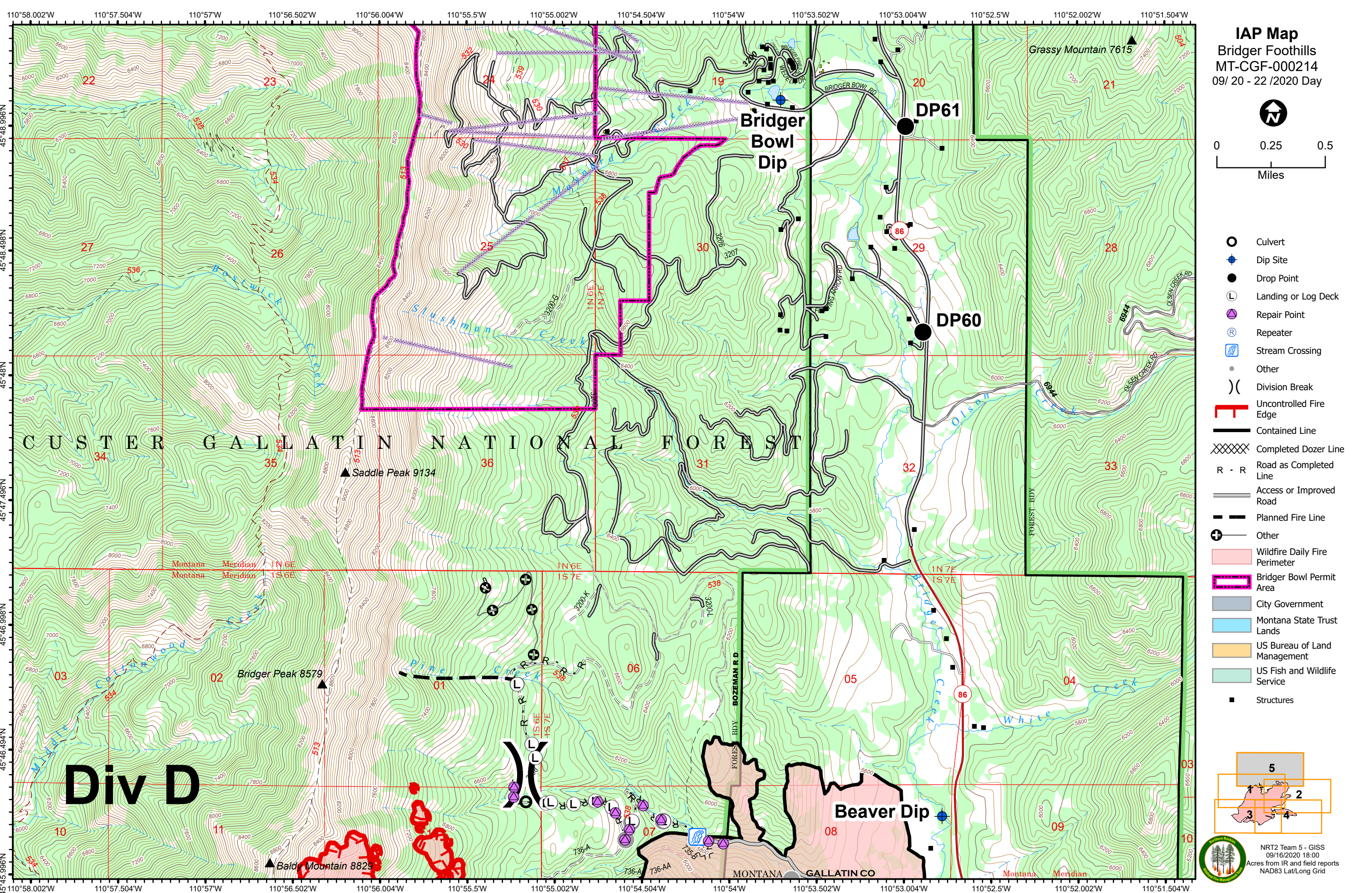


IAP Map
 Bridger Foothills
 MT-CGF-000214
 09/20 - 22 /2020 Day

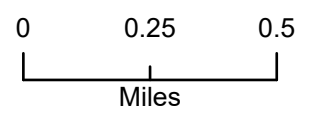


- Camp
- Dip Site
- Drop Point
- Fence - Cut/Damaged
- Fire Origin
- Fire Station
- Helispot
- Repair Point
- Repeater
- Division Break
- Contained Line
- Completed Dozer Line
- Completed Hand Line
- Road as Completed Line
- Access or Improved Road
- Temporary Flight Restriction
- Ridge/Geographic Feature
- Repair Line
- Wildfire Daily Fire Perimeter
- City Government
- Montana State Trust Lands
- US Bureau of Land Management
- US Fish and Wildlife Service
- Structures
- Vehicle Wash





IAP Map
 Bridger Foothills
 MT-CGF-000214
 09/20 - 22 /2020 Day



- Culvert
- Dip Site
- Drop Point
- Landing or Log Deck
- Repair Point
- Repeater
- Stream Crossing
- Other
- Division Break
- Uncontrolled Fire Edge
- Contained Line
- Completed Dozer Line
- Road as Completed Line
- Access or Improved Road
- Planned Fire Line
- Other
- Wildfire Daily Fire Perimeter
- Bridger Bowl Permit Area
- City Government
- Montana State Trust Lands
- US Bureau of Land Management
- US Fish and Wildlife Service
- Structures

