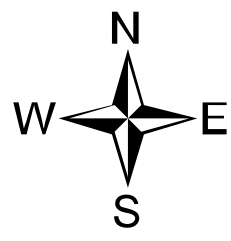


**Focus: Operations
Cinnabar
MT-LNF-001896
09/08/20**

**2,689 acres
09/06/2020 @ 2136 hrs**



0 0.5 1 2 Miles

NAD 1983 UTM Zone 12N

Remote Situation Unit
9/8/2020 0700 hrs



- Legend**
- Aerial Photo
 - Camp
 - Dip Site
 - Helipad
 - Drop Point
 - Fire Origin
 - Fire Aid Station
 - Helibase
 - Unimproved Landing Area
 - Incident Command Post
 - Lookout
 - Mobile Weather Unit
 - Staging Area
 - Water Source
 - Restricted Water Source
 - Value at Risk
 - Division Break
 - Uncontrolled Fire Edge
 - Completed Door Line
 - Road as Completed Line
 - Wildfire Daily Fire Perimeter
 - Structure
 - Radio Avian Site
 - HF/DL Collocated Towers
 - Radio Receiver Site
 - Radio Base Site
 - Antenna Structure Negatively Transmitted Lines
 - Interstate
 - US Highway
 - State Highway
 - Dirt Road, Suitable for Passenger Car
 - Gravel Road, Suitable for Passenger Car
 - County Road
 - Paved Road
 - Road, Not Maintained for Passenger Car
 - Railroad
 - 200 Ft Contour
 - FS Wilderness
 - FS Administrative Forest
 - Ownership
 - State of Montana
 - US Bureau of Land Management
 - US Fish and Wildlife Service
 - US Forest Service

DIV B

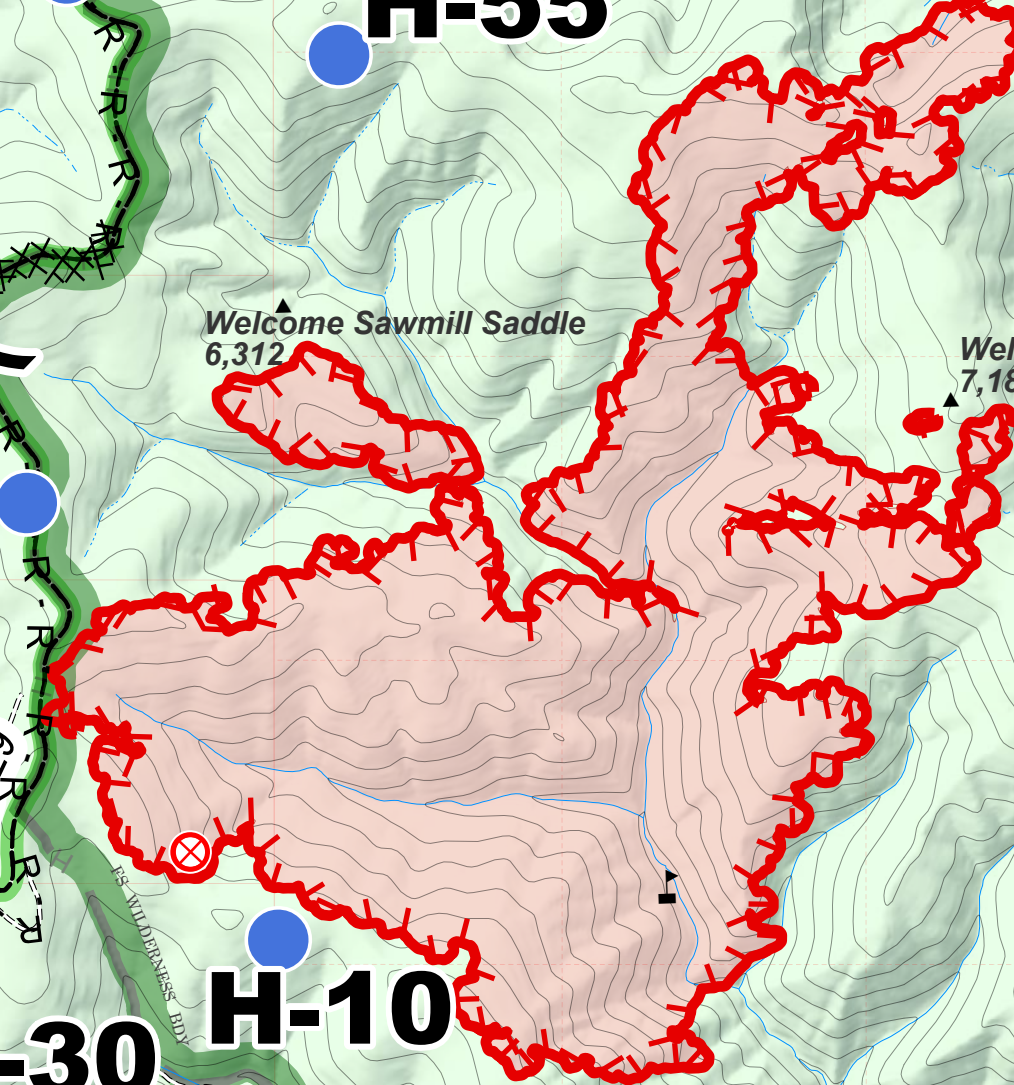
DIV C

DIV A

DIV U

DIV T

**WELCOME
CREEK
WILDERNESS**



DP-90

DP-94

H-70

DP-85

H-35

DP-80

DP-110

H-30

H-55

H-25

H-20

H-80

DP-40

DP-120

DP-30

H-10

DP-20

DP-15

DP-10

