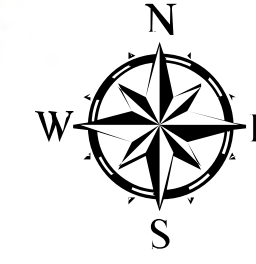


Operations

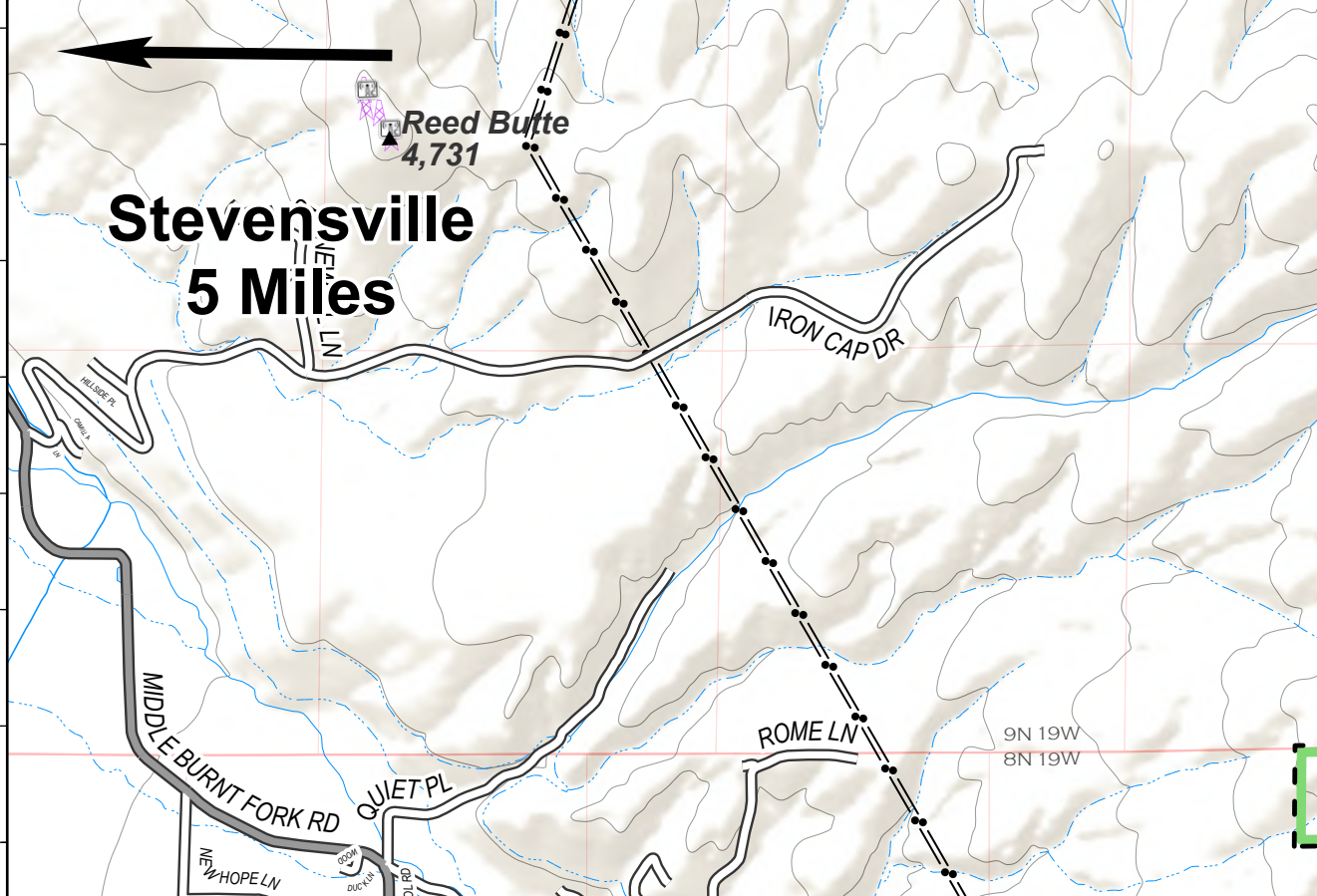
Cinnabar
MT-LNF-001896
08/28/2020 Day Shift

2000 acres at 08/25/2020 @ 1500 hrs

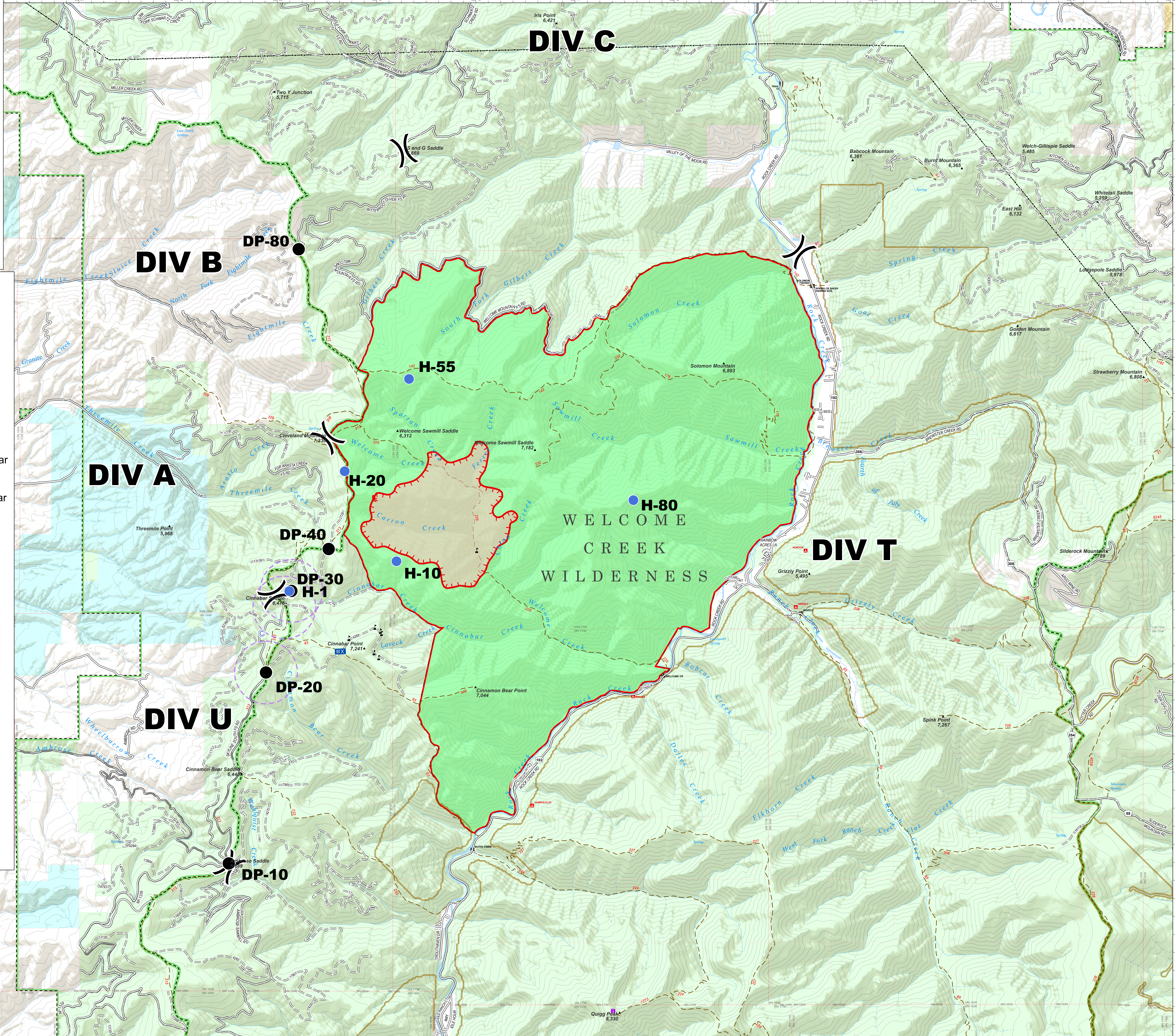


GCS: NAD 83
1983 UTM Zone 12N

- Camp
- Helispot
- Drop Point
- WUX Mobile Weather Unit
- ▲ Value at Risk
-) Division Break
- Uncontrolled Fire Edge
- Wildfire Daily Fire Perimeter
- 200 ft contours
- Gravel Road, Suitable for Passenger Car
- Dirt Road, Suitable for Passenger Car
- Road, Not Maintained for Passenger Car
- Other USFS Roads
- Paved Roads
- Other Roads
- USFS Trails
- LRZ Buffers
- ▲ USGS Mountain Features
- ▲ Campground
- Trailhead
- HIFLD Cellular Towers
- Radio Repeater Site
- Transmission Lines
- Antenna Structure Registrars
- Roadless Area
- FS Wilderness
- FS Administrative Forest
- Local Government
- State of Montana
- US Bureau of Land Management
- US Forest Service



Remote Situation Unit
Exported: 8/27/2020 7:46 PM



DIV C

DIV B

DIV A

DIV U

DIV T

WELCOME CREEK WILDERNESS

DP-80

H-55

H-20

H-80

H-10

DP-40

DP-30

H-1

DP-20

DP-10