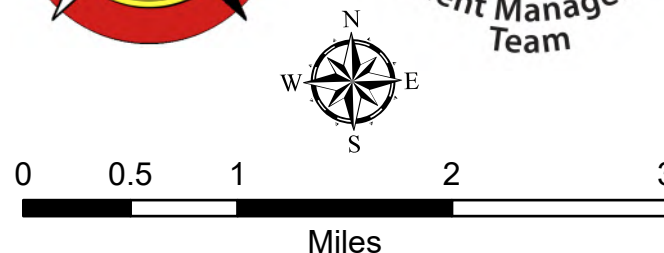


Briefing

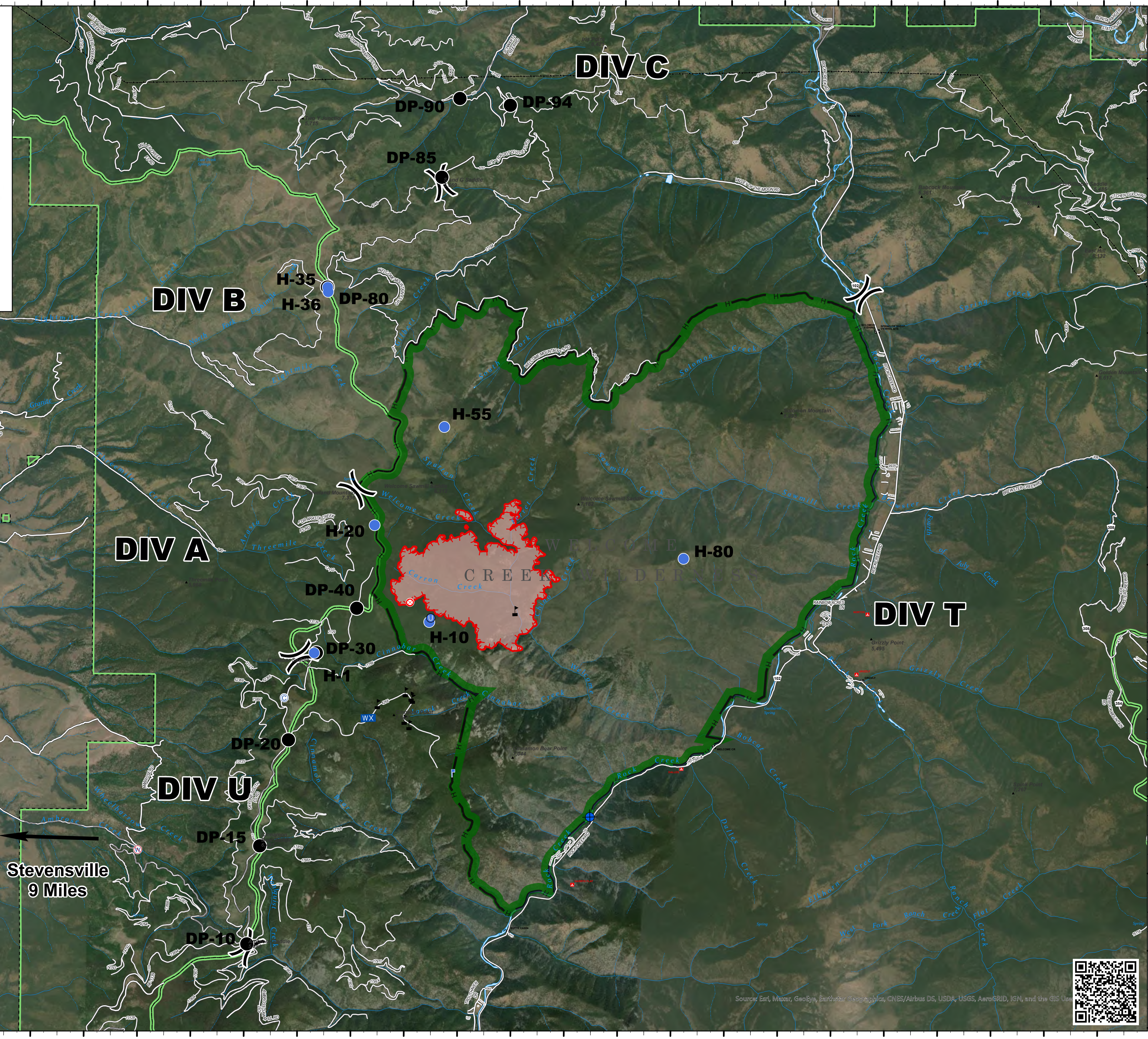
Cinnabar
MT-LNF-001896
08/29/2020 Day shift

1,751 acres at 08/28/2020 2126 hrs



NAD 1983 UTM Zone 12N

- Camp
- Dip Site
- Unimproved Landing Area
- Helispot
- Drop Point
- Fire Origin
- Lookout
- Mobile Weather Unit
- Restricted Water Source
- Value at Risk
- Division Break
- Uncontrolled Fire Edge
- Wildfire Daily Fire Perimeter
- Gravel Road, Suitable for Passenger Car
- Dirt Road, Suitable for Passenger Car
- Road, Not Maintained for Passenger Car
- Other USFS Roads
- Paved Roads
- Other Roads
- USGS Mountain Features
- Campground
- Trailhead
- HIFLD Cellular Towers
- Transmission Lines
- Antenna Structure Registrare
- Special Interest Management Area
- FS Wilderness
- FS Administrative Forest



Stevensville
9 Miles

Remote Situation Unit
Exported: 8/29/2020 6:16 AM



Source: Esri, Microsoft, GeoEye, Earthstar Geographics, CNES/Airbus DS, USDA, USGS, AeroGRID, IGN, and the GIS User Community