

114°5'W

114°W

113°55'W

113°50'W

113°45'W

113°40'W

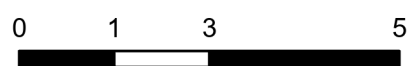
Transportation

Cinnabar

MT-LNF-001896

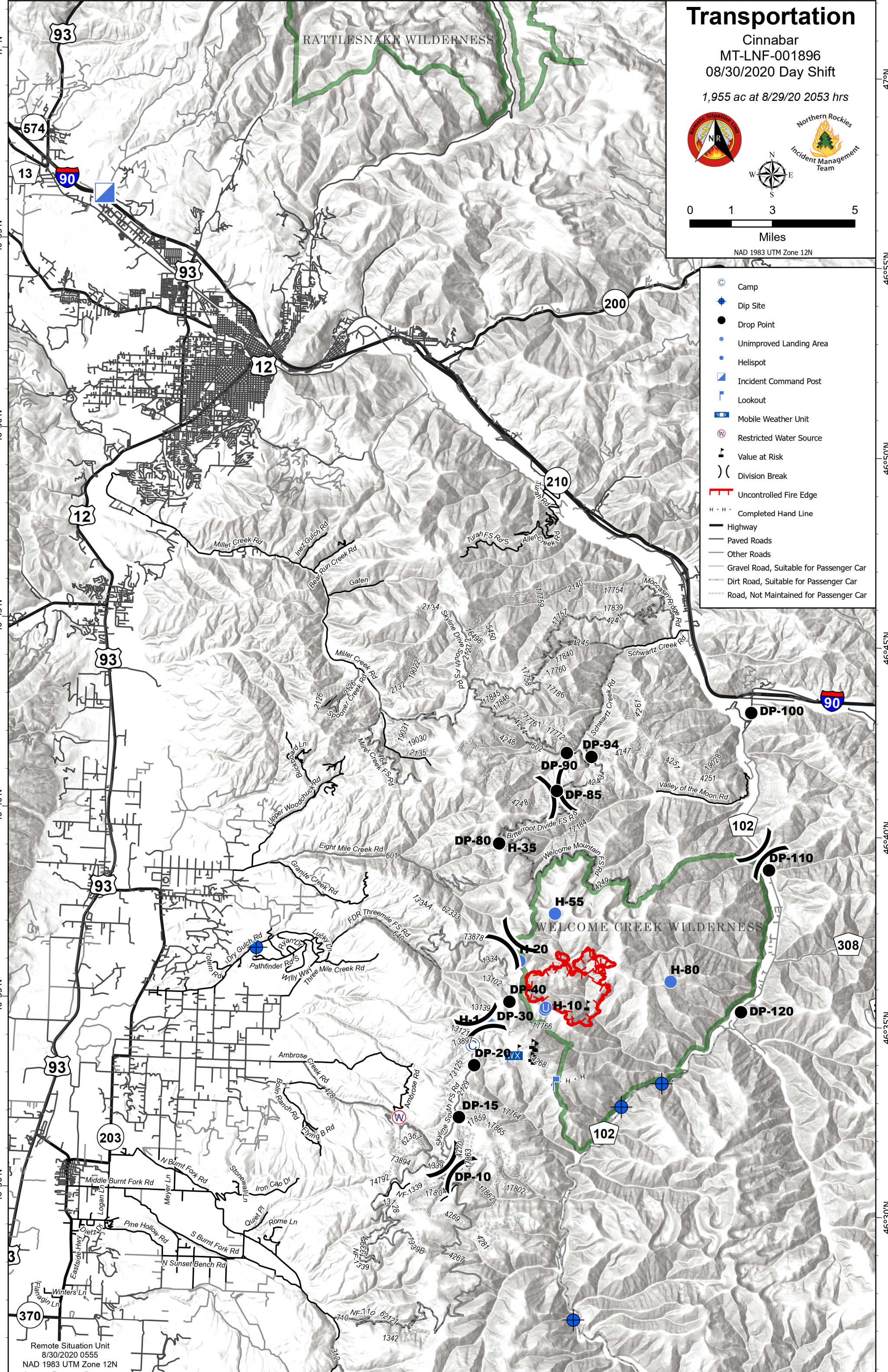
08/30/2020 Day Shift

1,955 ac at 8/29/20 2053 hrs



Miles
NAD 1983 UTM Zone 12N

- Camp
- Dip Site
- Drop Point
- Unimproved Landing Area
- Helispot
- Incident Command Post
- Lookout
- Mobile Weather Unit
- Restricted Water Source
- Value at Risk
- Division Break
- Uncontrolled Fire Edge
- Completed Hand Line
- Highway
- Paved Roads
- Other Roads
- Gravel Road, Suitable for Passenger Car
- Dirt Road, Suitable for Passenger Car
- Road, Not Maintained for Passenger Car



Remote Situation Unit
8/30/2020 0555
NAD 1983 UTM Zone 12N

114°5'W

114°W

113°55'W

113°50'W

113°45'W

113°40'W

113°35'W

47°N
46°55'N
46°50'N
46°45'N
46°40'N
46°35'N
46°30'N
46°25'N
46°20'N
46°15'N
46°10'N
46°05'N
46°00'N

47°N
46°55'N
46°50'N
46°45'N
46°40'N
46°35'N
46°30'N
46°25'N
46°20'N
46°15'N
46°10'N
46°05'N
46°00'N