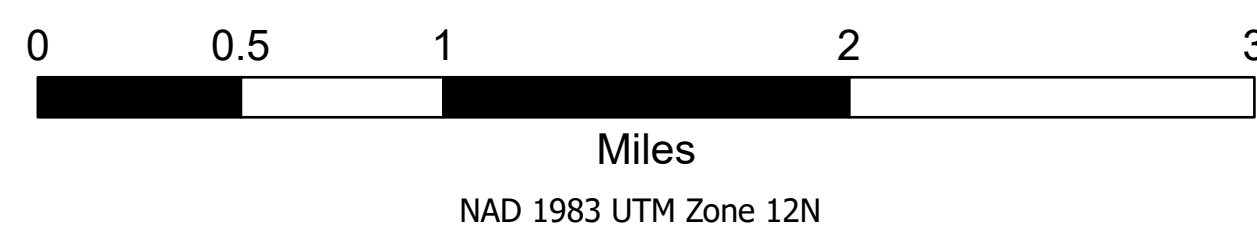
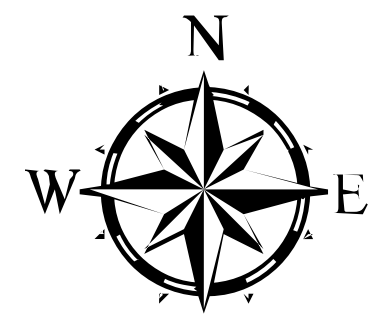
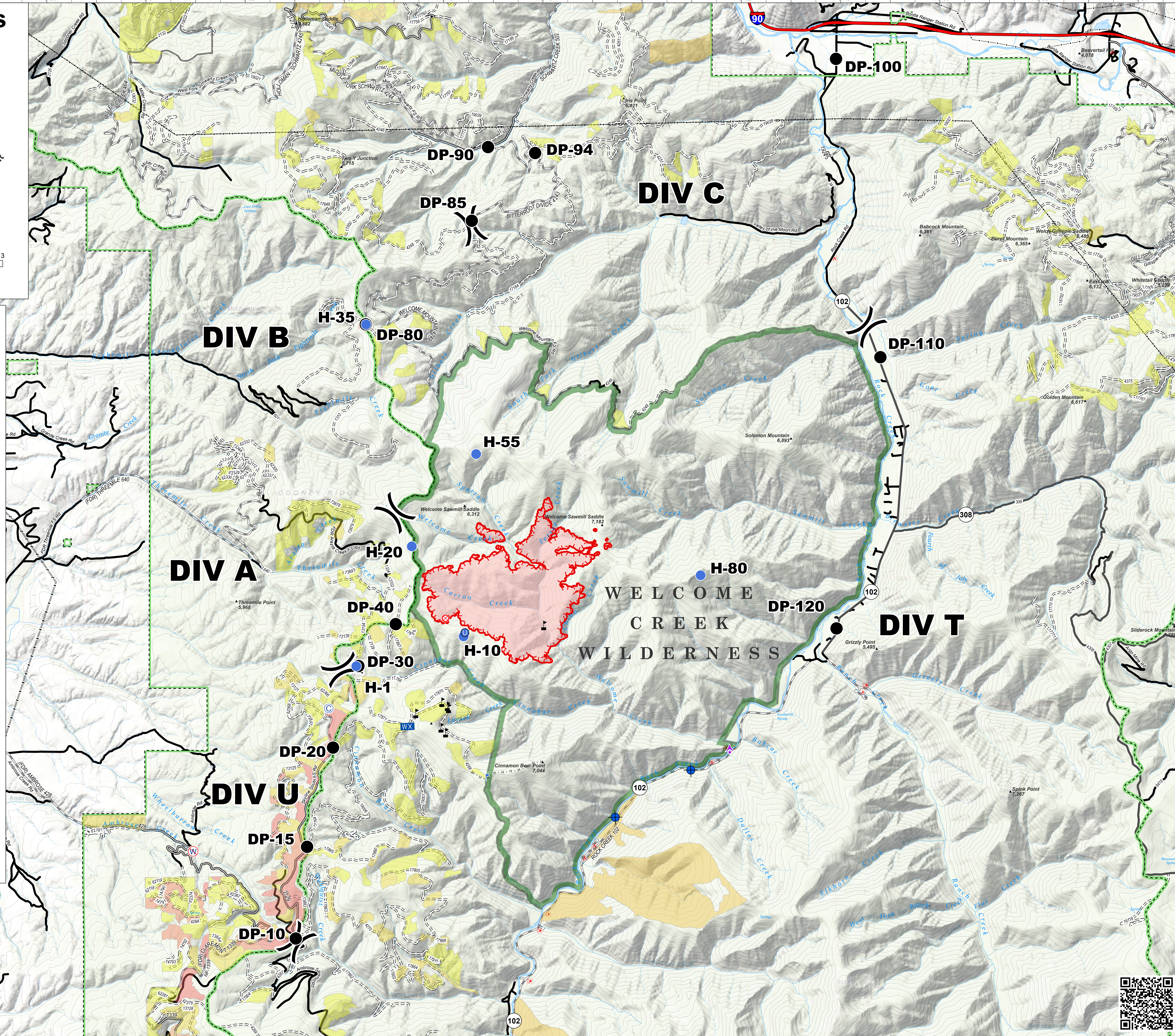


Timber Activities

Cinnabar
MT-LNF-001896
09/01/2020 Day shift
2,119 ac at 8/30/20 2144 hrs



- Aerial Hazard
- Camp
- Dip Site
- Unimproved Landing Area
- Helispot
- Drop Point
- Fire Origin
- Lookout
- Mobile Weather Unit
- Restricted Water Source
- Value at Risk
- Division Break
- Uncontrolled Fire Edge
- Completed Hand Line
- Wildfire Daily Fire Perimeter
- 200 ft contours
- Interstate
- Dirt Road, Suitable for Passenger Car
- Gravel Road, Suitable for Passenger Car
- County Road
- Paved Road
- Road, Not Maintained for Passenger Car
- USGS Mountain Features
- HIFLD Cellular Towers
- Transmission Lines
- Antenna Structure Registrare
- FS Wilderness
- FS Administrative Forest
- Timber Activities
- 1970-1979
- 1980-1989
- 1990-1999
- 2000-2009
- 2010-2014
- 2015
- 2016



Stevensville
5 Miles

