

-114°21' -114°18' -114°15' -114°12' -114°9' -114°6' -114°3' -114° -113°57' -113°54' -113°51' -113°48' -113°45' -113°42' -113°39' -113°36' -113°33' -113°30' -113°27' -113°24' -113°21'

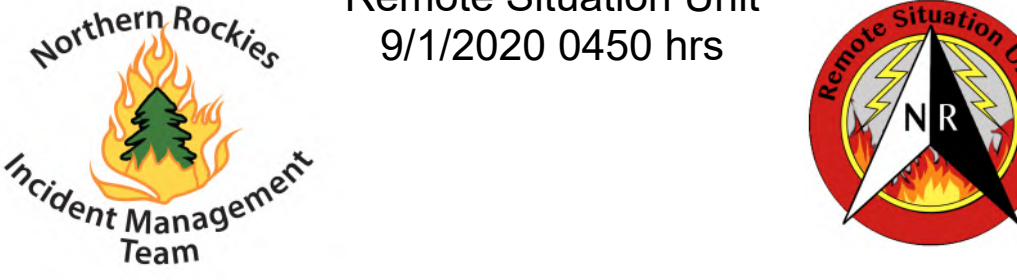
Operations
Cinnabar
MT-LNF-001896
09/01/20
2,119 acres
08/30/2020 @ 2144 hrs

N
W E
S

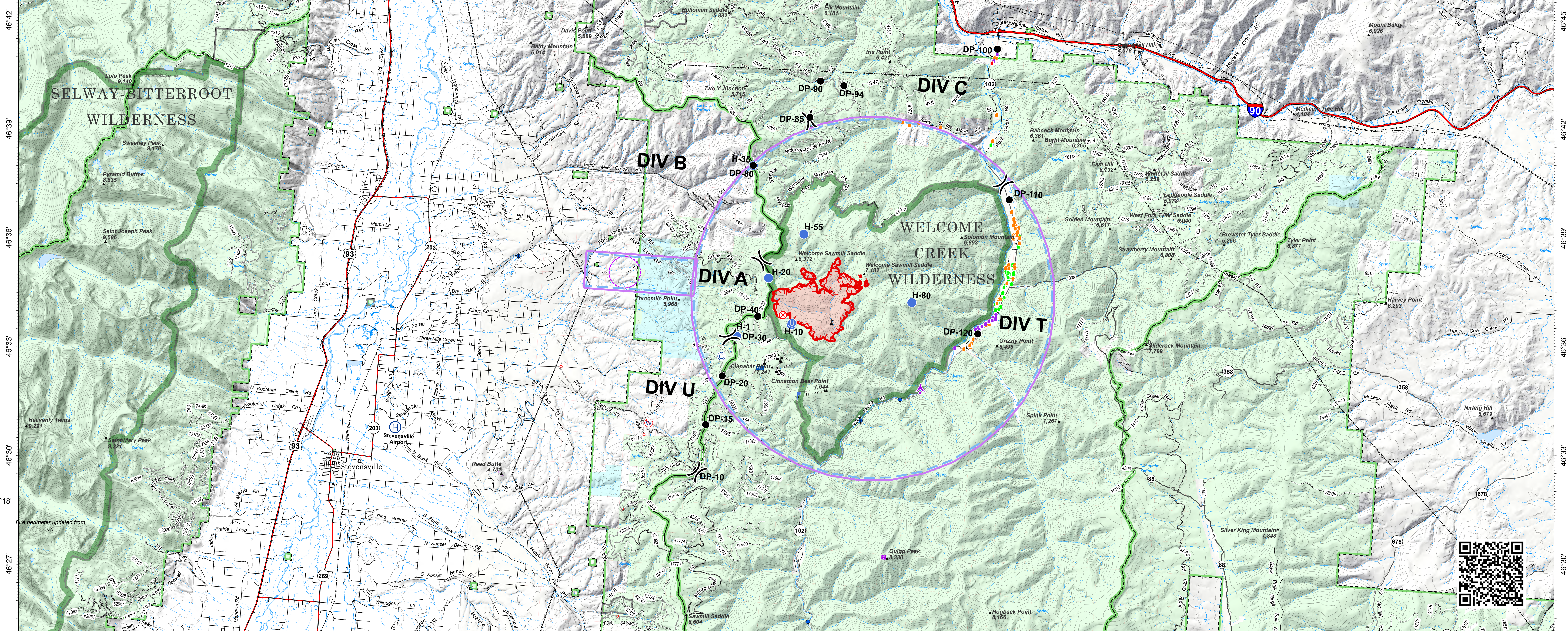
0 1 2 4 Miles

NAD 1983 UTM Zone 12N

Remote Situation Unit
9/1/2020 0450 hrs



- Legend**
- ▲ Aerial Hazard
 - Camp
 - Dip Site
 - Helispot
 - Drop Point
 - Fire Origin
 - Helibase
 - Unimproved Landing Area
 - Incident Command Post
 - Lookout
 - Mobile Weather Unit
 - Restricted Water Source
 - Value at Risk
 - ▲ Division Break
 - ▲ Uncontrolled Fire Edge
 - ▲ Completed Hand Line
 - ▲ Temporary Flight Restriction
 - ▲ UAS Launch & Recovery Zone
 - ▲ Wildfire Daily Fire Perimeter
- Structure Triage**
- Defensible - Stand Alone
 - Defensible - Prep and Hold
 - Non-Defensible - Prep and Leave
 - Non-Defensible - Rescue Drive-By
 - Unknown
- Ownership**
- Local Government
 - State of Montana
 - US Bureau of Land Management
 - US Fish and Wildlife Service
 - US Forest Service
- Other Legend Items:**
- Radio Aviation Site
 - HIFLD Cellular Towers
 - HIFLD Land Mobile Broadcast Towers
 - Radio Repeater Site
 - Radio Base Site
 - Antenna Structure Registrars
 - Transmission Lines
 - FS Administrative Forest
 - FS Wilderness
 - 200 Ft Contour
 - Interstate
 - US Highway
 - State Highway
 - Dirt Road, Suitable for Passenger Car
 - Gravel Road, Suitable for Passenger Car
 - County Road
 - Paved Road
 - Road, Not Maintained for Passenger Car
 - Railroad



-114°15' -114°12' -114°9' -114°6' -114°3' -114° -113°57' -113°54' -113°51' -113°48' -113°45' -113°42' -113°39' -113°36' -113°33' -113°30' -113°27' -113°24' -113°21'