

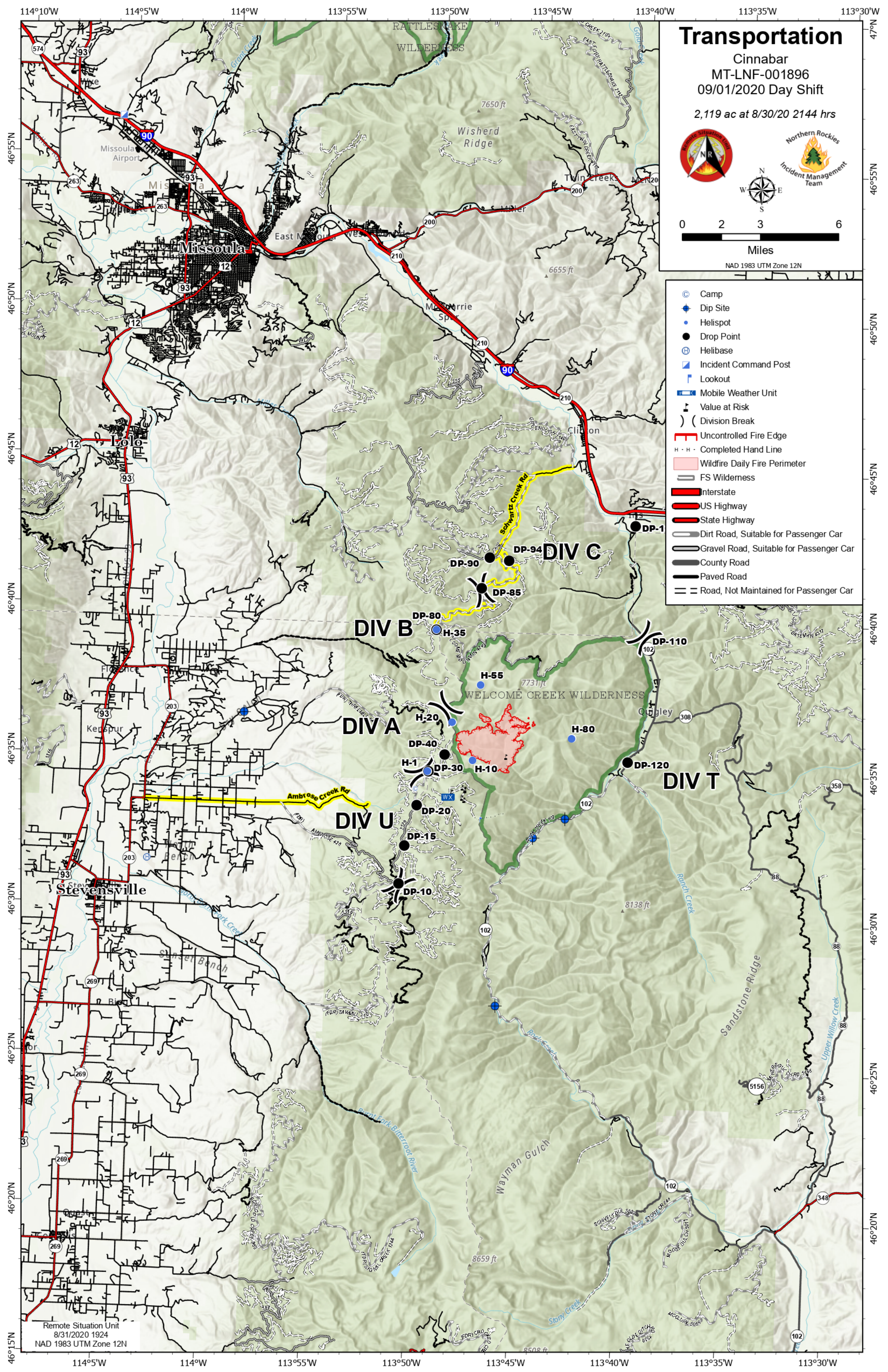
Transportation

Cinnabar
MT-LNF-001896
09/01/2020 Day Shift
2,119 ac at 8/30/20 2144 hrs



NAD 1983 UTM Zone 12N

- ⊙ Camp
- ◆ Dip Site
- Helispot
- Drop Point
- ⊕ Helibase
- Ⓜ Incident Command Post
- Ⓜ Lookout
- Ⓜ Mobile Weather Unit
- Ⓜ Value at Risk
-) (Division Break
- ▬ Uncontrolled Fire Edge
- ⋯ Completed Hand Line
- ▭ Wildfire Daily Fire Perimeter
- ▭ FS Wilderness
- ▬ Interstate
- ▬ US Highway
- ▬ State Highway
- ▬ Dirt Road, Suitable for Passenger Car
- ▬ Gravel Road, Suitable for Passenger Car
- ▬ County Road
- ▬ Paved Road
- ▬ Road, Not Maintained for Passenger Car



Remote Situation Unit
8/31/2020 1924
NAD 1983 UTM Zone 12N