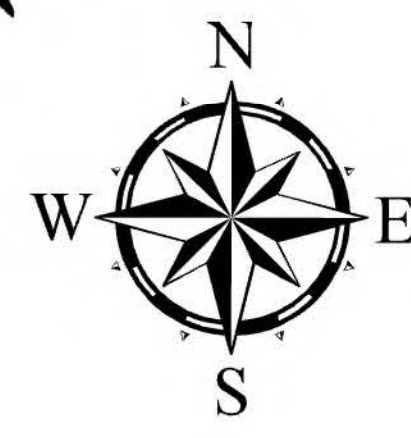


# Briefing

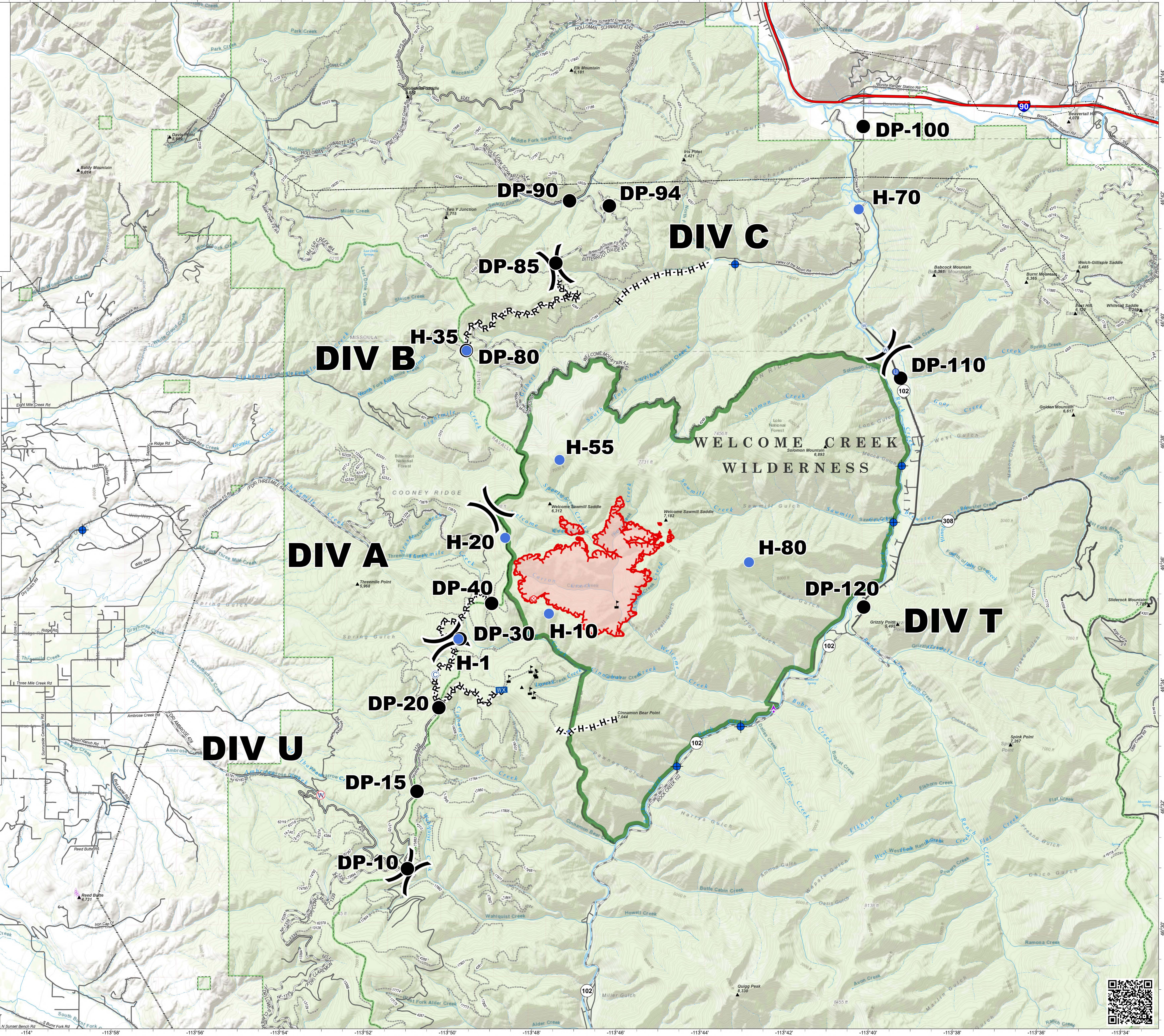
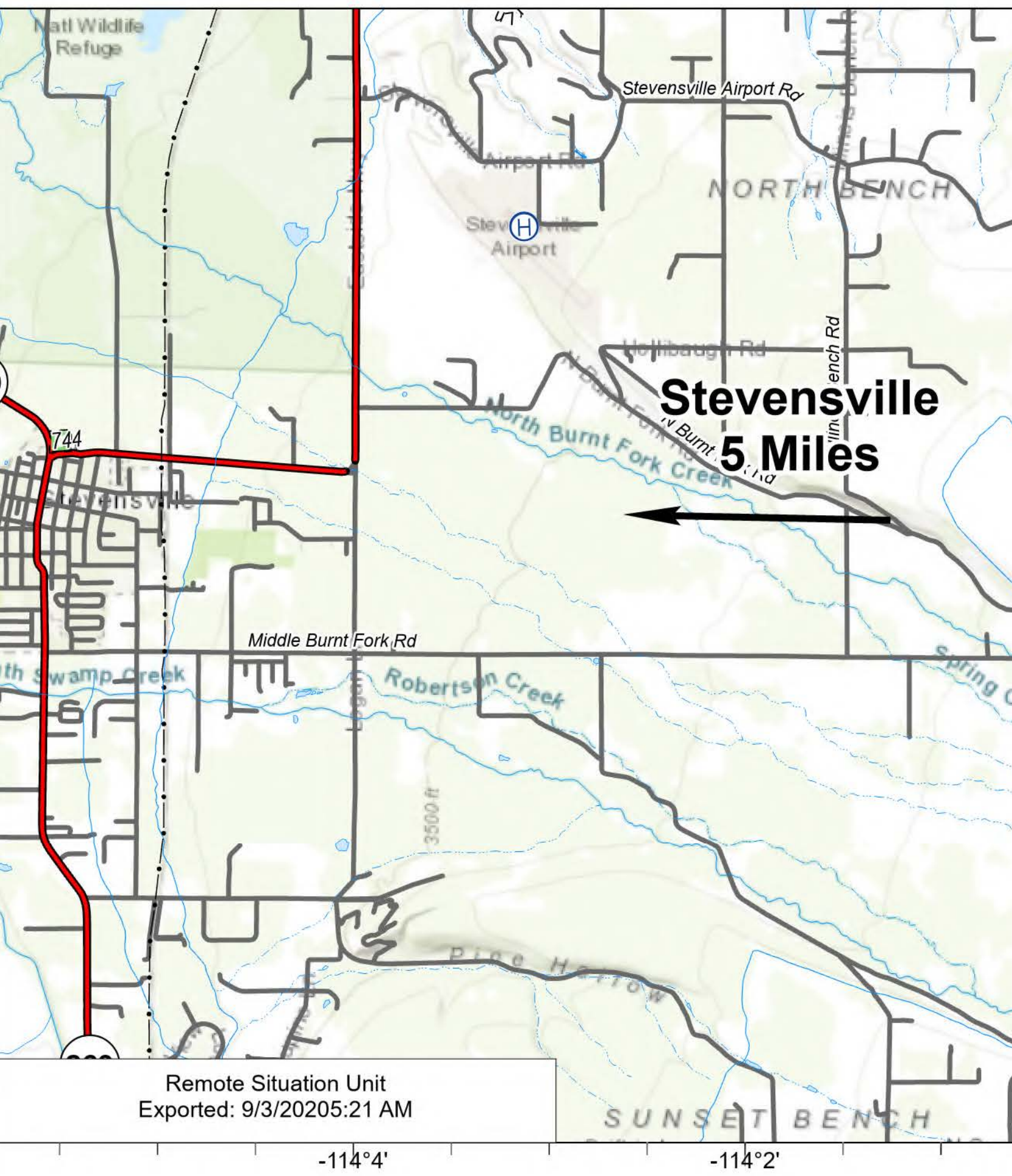
## Cinnabar

MT-LNF-001896  
09/03/2020 Day shift  
2,124 ac at 9/03/20 0038 hrs



NAD 1983 UTM Zone 12N

- Aerial Hazard
- Camp
- Dip Site
- Unimproved Landing Area
- Helispot
- Drop Point
- Fire Origin
- Helibase
- Lookout
- Mobile Weather Unit
- Water Source
- Restricted Water Source
- Value at Risk
- Division Break
- Uncontrolled Fire Edge
- Completed Hand Line
- Road as Completed Line
- Wildfire Daily Fire Perimeter
- 200 ft contours
- Interstate
- US Highway
- State Highway
- Dirt Road, Suitable for Passenger Car
- Gravel Road, Suitable for Passenger Car
- County Road
- Paved Road
- Road, Not Maintained for Passenger Car
- USGS Mountain Features
- Antenna Structure Registrare
- Transmission Lines
- FS Wilderness
- FS Administrative Forest



### DIV U

### DIV A

### DIV B

### DIV C

### DIV T

DP-90

DP-94

H-70

DP-85

H-35

DP-80

DP-110

H-55

H-20

DP-40

H-80

DP-120

H-10

DP-30

DP-20

H-1

DP-15

DP-10

