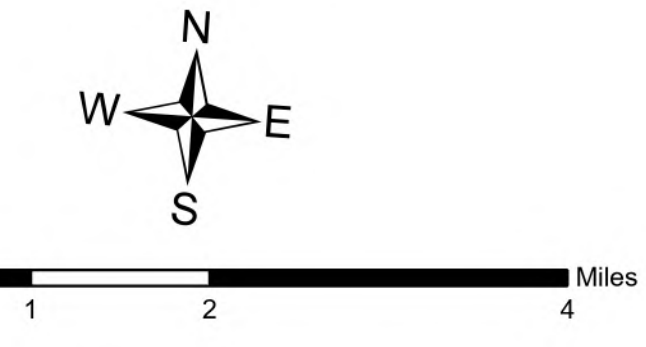
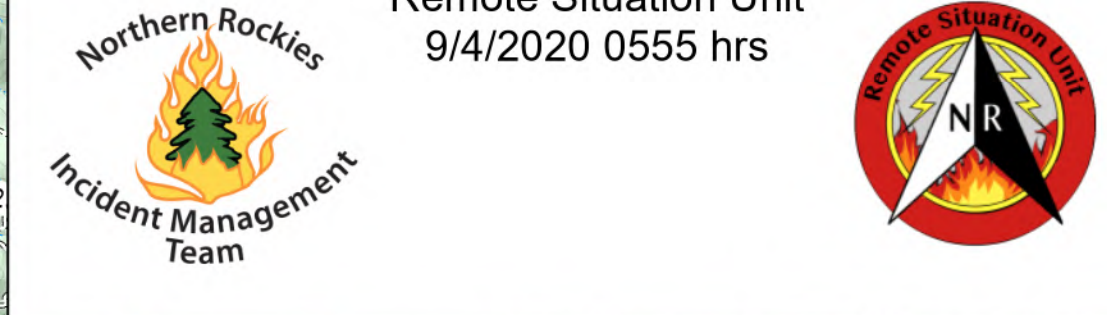


Operations
Cinnabar
MT-LNF-001896
09/04/20
2,133 acres
09/03/2020 @ 0552 hrs



NAD 1983 UTM Zone 12N

Remote Situation Unit
9/4/2020 0555 hrs



- Legend**
- Aerial Hazard
 - Camp
 - Dip Site
 - Helispot
 - Drop Point
 - Fire Origin
 - Helibase
 - Unimproved Landing Area
 - Incident Command Post
 - Lookout
 - Mobile Weather Unit
 - Water Source
 - Restricted Water Source
 - Value at Risk
 - Division Break
 - Wildfire Daily Fire Perimeter
 - Structures
 - Radio Base Site
 - Antenna Structure Register
 - Transmission Lines
 - FS Administrative Forest
 - FS Wilderness
 - 200 Ft Contour
 - Interstate
 - US Highway
 - State Highway
 - Dirt Road, Suitable for Passenger Car
 - Gravel Road, Suitable for Passenger Car
 - County Road
 - Paved Road
 - Road, Not Maintained for Passenger Car
 - Railroad
 - Ownership
 - Local Government
 - State of Montana
 - US Bureau of Land Management
 - US Fish and Wildlife Service
 - US Forest Service

ICP

Missoula

SELWAY-BITTERROOT
WILDERNESS

DIV B

DIV A

DIV U

DIV C

DIV T

DP-90

DP-94

DP-100

H-35

DP-80

H-25

H-20

DP-40

H-1

DP-30

DP-20

DP-15

DP-10

H-30

H-55

H-80

H-10

H-20

H-10

H-10

H-10

H-10

H-10

H-10

H-10

H-10

DP-110

DP-120

