

-114°21' -114°18' -114°15' -114°12' -114°9' -114°6' -114°3' -114° -113°57' -113°54' -113°51' -113°48' -113°45' -113°42' -113°39' -113°36' -113°33' -113°30' -113°27' -113°24' -113°21'

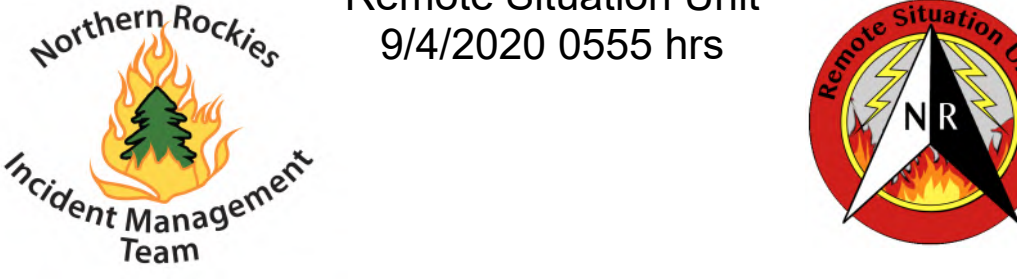
Operations
Cinnabar
 MT-LNF-001896
 09/04/20
 2,133 acres
 09/03/2020 @ 0552 hrs

N
 W E
 S

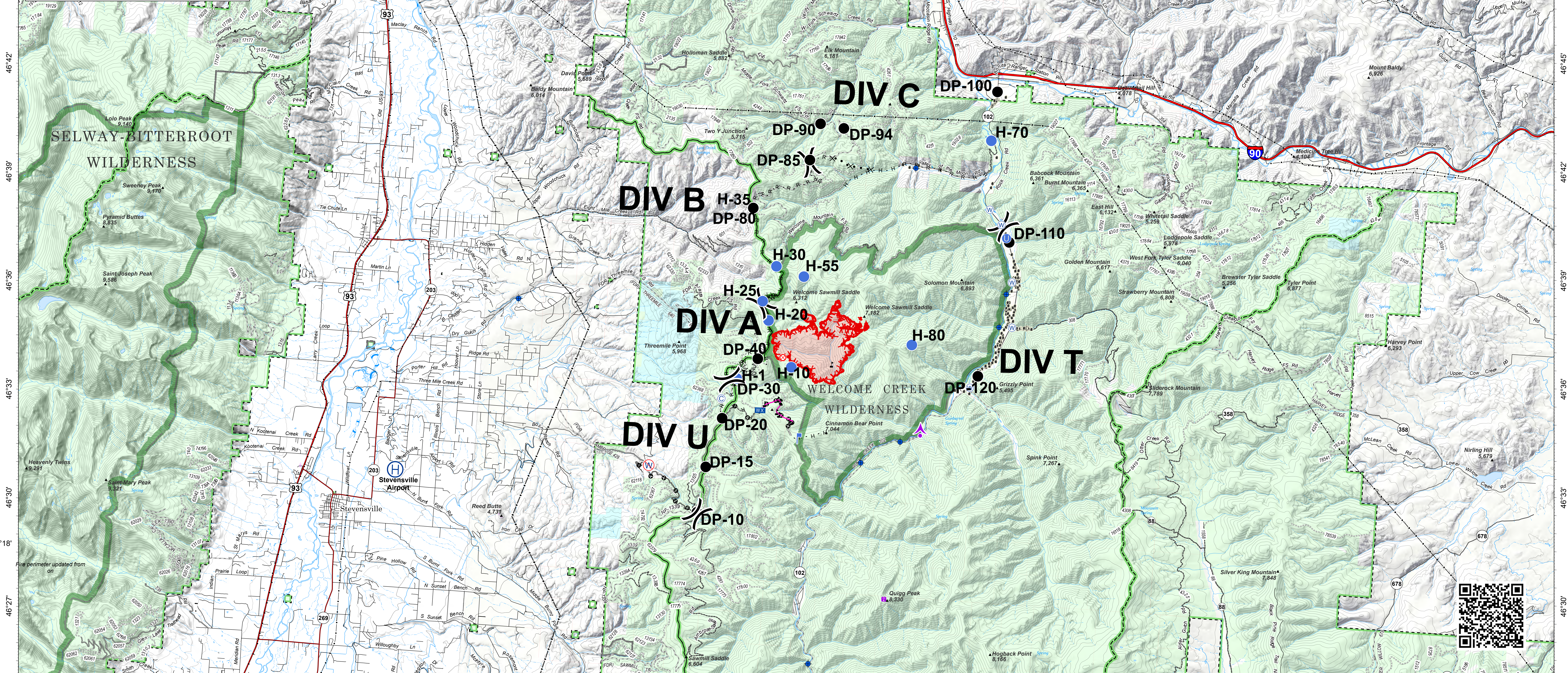
0 1 2 4 Miles

NAD 1983 UTM Zone 12N

Remote Situation Unit
 9/4/2020 0555 hrs



- Legend**
- Aerial Hazard
 - Camp
 - Dip Site
 - Helispot
 - Drop Point
 - Fire Origin
 - Helibase
 - Unimproved Landing Area
 - Incident Command Post
 - Lookout
 - Mobile Weather Unit
 - Water Source
 - Restricted Water Source
 - Value at Risk
 - Division Break
 - Wildfire Daily Fire Perimeter
 - Structures
 - Radio Base Site
 - Antenna Structure Register
 - Transmission Lines
 - FS Administrative Forest
 - FS Wilderness
 - 200 Ft Contour
 - Interstate
 - US Highway
 - State Highway
 - Dirt Road, Suitable for Passenger Car
 - Gravel Road, Suitable for Passenger Car
 - County Road
 - Paved Road
 - Road, Not Maintained for Passenger Car
 - Railroad
 - Ownership
 - Local Government
 - State of Montana
 - US Bureau of Land Management
 - US Fish and Wildlife Service
 - US Forest Service



-114°15' -114°12' -114°9' -114°6' -114°3' -114° -113°57' -113°54' -113°51' -113°48' -113°45' -113°42' -113°39' -113°36' -113°33' -113°30' -113°27' -113°24' -113°21'

