

-114°21' -114°18' -114°15' -114°12' -114°9' -114°6' -114°3' -114° -113°57' -113°54' -113°51' -113°48' -113°45' -113°42' -113°39' -113°36' -113°33' -113°30' -113°27' -113°24' -113°21'

**Operations**  
**Cinnabar**  
 MT-LNF-001896  
 09/05/20  
 2,179 acres  
 09/04/2020 @ 2101 hrs

N  
 W E  
 S

0 1 2 4 Miles

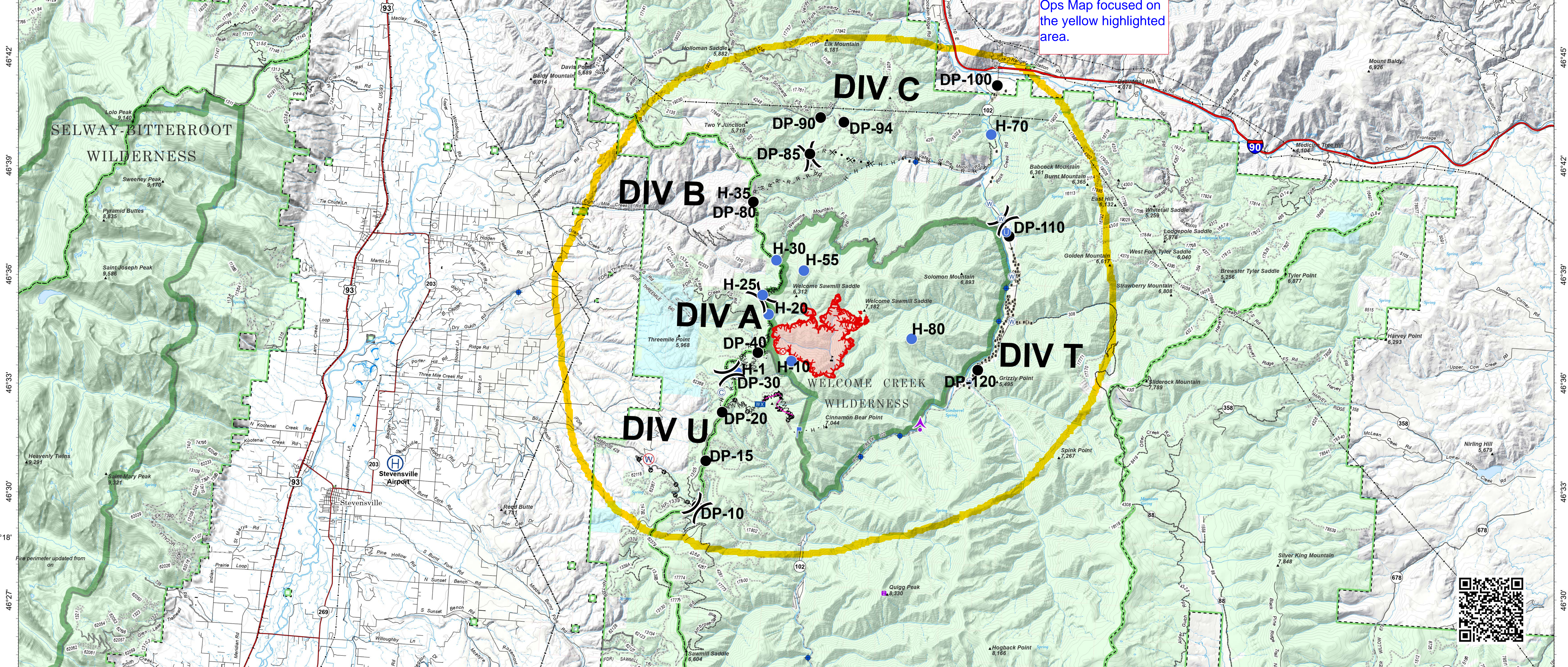
NAD 1983 UTM Zone 12N

Remote Situation Unit  
 9/5/2020 0535 hrs

Map adjusted to N  
 straight up vs. true  
 north

- Legend**
- Aerial Hazard
  - Camp
  - Dip Site
  - Helispot
  - Drop Point
  - Fire Origin
  - Helibase
  - Unimproved Landing Area
  - Incident Command Post
  - Lookout
  - Mobile Weather Unit
  - Water Source
  - Restricted Water Source
  - Value at Risk
  - Division Break
  - Wildfire Daily Fire Perimeter
  - Structures
  - Radio Base Site
  - Antenna Structure Register
  - Transmission Lines
  - FS Administrative Forest
  - FS Wilderness
  - 200 Ft Contour
  - Interstate
  - US Highway
  - State Highway
  - Dirt Road, Suitable for Passenger Car
  - Gravel Road, Suitable for Passenger Car
  - County Road
  - Paved Road
  - Road, Not Maintained for Passenger Car
  - Railroad
  - Ownership
  - Local Government
  - State of Montana
  - US Bureau of Land Management
  - US Fish and Wildlife Service
  - US Forest Service

Ops Map focused on  
 the yellow highlighted  
 area.



-114°15' -114°12' -114°9' -114°6' -114°3' -114° -113°57' -113°54' -113°51' -113°48' -113°45' -113°42' -113°39' -113°36' -113°33' -113°30' -113°27' -113°24' -113°21'