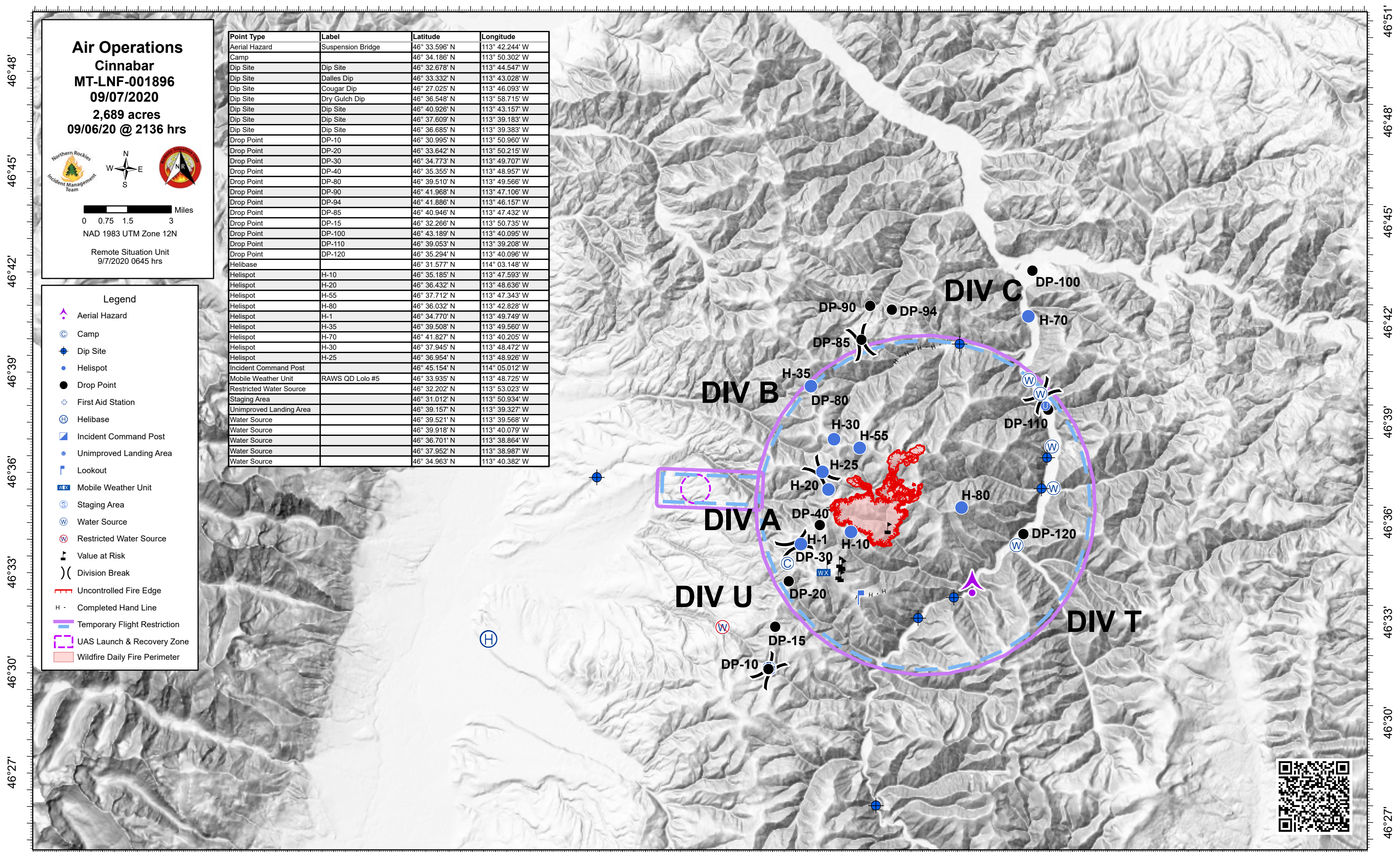


-114°24' -114°21' -114°18' -114°15' -114°12' -114°9' -114°6' -114°3' -114° -113°57' -113°54' -113°51' -113°48' -113°45' -113°42' -113°39' -113°36' -113°33' -113°30' -113°27'



**Air Operations**  
**Cinnabar**  
**MT-LNF-001896**  
**09/07/2020**  
**2,689 acres**  
**09/06/20 @ 2136 hrs**



0 0.75 1.5 3 Miles  
 NAD 1983 UTM Zone 12N  
 Remote Situation Unit  
 9/7/2020 0645 hrs

Point Type	Label	Latitude	Longitude
Aerial Hazard	Suspension Bridge	46° 33.596' N	113° 42.244' W
Camp		46° 34.186' N	113° 50.302' W
Dip Site	Dip Site	46° 32.678' N	113° 44.547' W
Dip Site	Dalles Dip	46° 33.332' N	113° 43.028' W
Dip Site	Cougar Dip	46° 27.025' N	113° 46.093' W
Dip Site	Dry Gulch Dip	46° 36.548' N	113° 58.715' W
Dip Site	Dip Site	46° 40.926' N	113° 43.157' W
Dip Site	Dip Site	46° 37.609' N	113° 39.183' W
Dip Site	Dip Site	46° 36.685' N	113° 39.383' W
Drop Point	DP-10	46° 30.995' N	113° 50.960' W
Drop Point	DP-20	46° 33.642' N	113° 50.215' W
Drop Point	DP-30	46° 34.773' N	113° 49.707' W
Drop Point	DP-40	46° 35.355' N	113° 48.957' W
Drop Point	DP-80	46° 39.510' N	113° 49.566' W
Drop Point	DP-90	46° 41.968' N	113° 47.106' W
Drop Point	DP-94	46° 41.886' N	113° 46.157' W
Drop Point	DP-85	46° 40.946' N	113° 47.432' W
Drop Point	DP-15	46° 32.266' N	113° 50.735' W
Drop Point	DP-100	46° 43.189' N	113° 40.095' W
Drop Point	DP-110	46° 39.053' N	113° 39.208' W
Drop Point	DP-120	46° 35.294' N	113° 40.096' W
Helibase		46° 31.577' N	114° 03.148' W
Helispot	H-10	46° 35.185' N	113° 47.593' W
Helispot	H-20	46° 36.432' N	113° 48.636' W
Helispot	H-55	46° 37.712' N	113° 47.343' W
Helispot	H-80	46° 36.032' N	113° 42.828' W
Helispot	H-1	46° 34.770' N	113° 49.749' W
Helispot	H-35	46° 39.508' N	113° 49.560' W
Helispot	H-70	46° 41.827' N	113° 40.205' W
Helispot	H-30	46° 37.945' N	113° 48.472' W
Helispot	H-25	46° 36.954' N	113° 48.926' W
Incident Command Post		46° 45.154' N	114° 05.012' W
Mobile Weather Unit	RAWS QD Lolo #5	46° 33.935' N	113° 48.725' W
Restricted Water Source		46° 32.202' N	113° 53.023' W
Staging Area		46° 31.012' N	113° 50.934' W
Unimproved Landing Area		46° 39.157' N	113° 39.327' W
Water Source		46° 39.521' N	113° 39.568' W
Water Source		46° 39.918' N	113° 40.079' W
Water Source		46° 36.701' N	113° 38.864' W
Water Source		46° 37.952' N	113° 38.987' W
Water Source		46° 34.963' N	113° 40.382' W

- Legend**
- Aerial Hazard
  - Camp
  - Dip Site
  - Helispot
  - Drop Point
  - First Aid Station
  - Helibase
  - Incident Command Post
  - Unimproved Landing Area
  - Lookout
  - Mobile Weather Unit
  - Staging Area
  - Water Source
  - Restricted Water Source
  - Value at Risk
  - Division Break
  - Uncontrolled Fire Edge
  - Completed Hand Line
  - Temporary Flight Restriction
  - UAS Launch & Recovery Zone
  - Wildfire Daily Fire Perimeter



-114°21' -114°18' -114°15' -114°12' -114°9' -114°6' -114°3' -114° -113°57' -113°54' -113°51' -113°48' -113°45' -113°42' -113°39' -113°36' -113°33' -113°30' -113°27'