

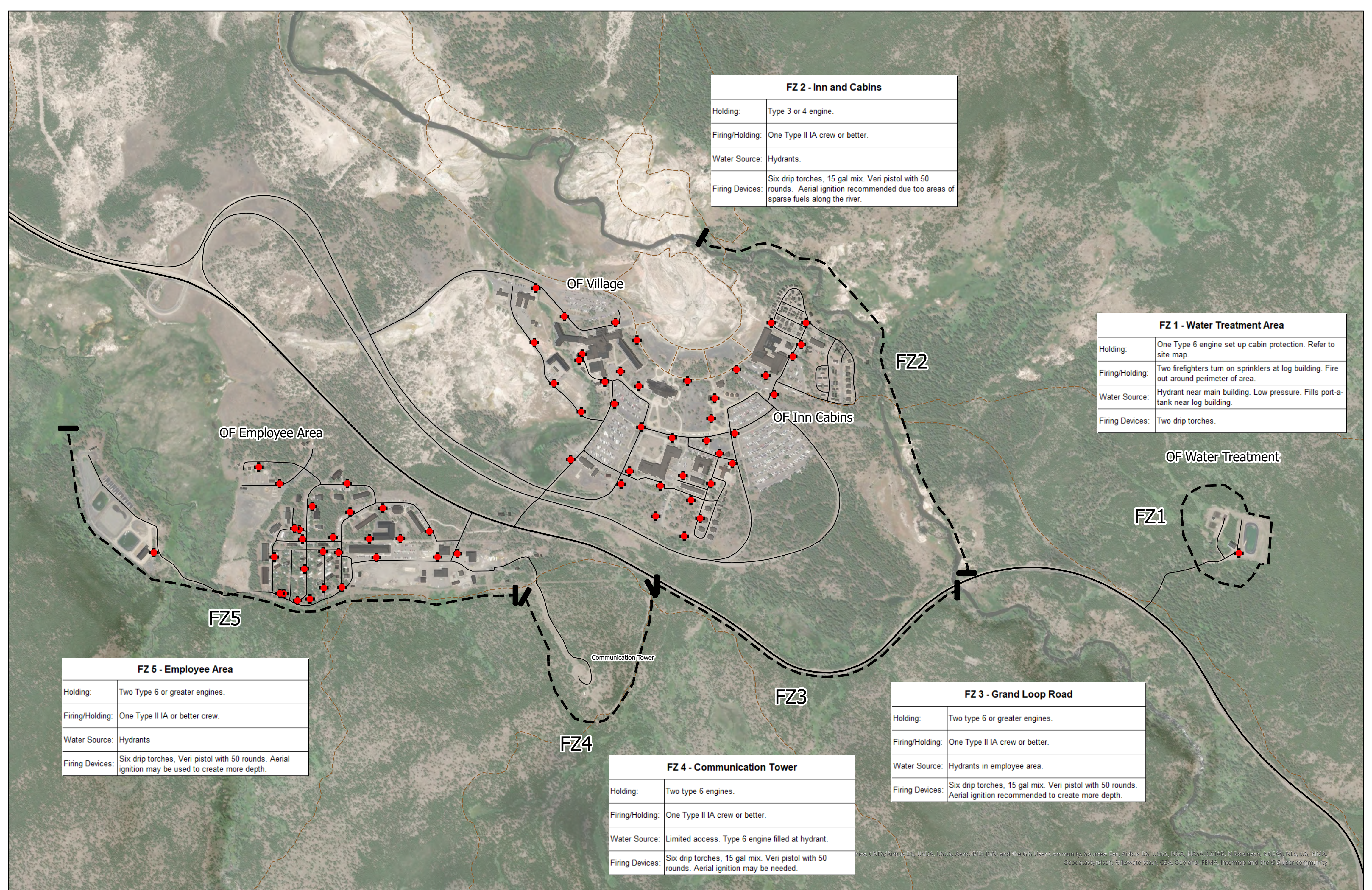
FZ 2 - Inn and Cabins	
Holding:	Type 3 or 4 engine.
Firing/Holding:	One Type II IA crew or better.
Water Source:	Hydrants.
Firing Devices:	Six drip torches, 15 gal mix. Veri pistol with 50 rounds. Aerial ignition recommended due too areas of sparse fuels along the river.

FZ 1 - Water Treatment Area	
Holding:	One Type 6 engine set up cabin protection. Refer to site map.
Firing/Holding:	Two firefighters turn on sprinklers at log building. Fire out around perimeter of area.
Water Source:	Hydrant near main building. Low pressure. Fills port-a-tank near log building.
Firing Devices:	Two drip torches.

FZ 5 - Employee Area	
Holding:	Two Type 6 or greater engines.
Firing/Holding:	One Type II IA or better crew.
Water Source:	Hydrants
Firing Devices:	Six drip torches, Veri pistol with 50 rounds. Aerial ignition may be used to create more depth.

FZ 4 - Communication Tower	
Holding:	Two type 6 engines.
Firing/Holding:	One Type II IA crew or better.
Water Source:	Limited access. Type 6 engine filled at hydrant.
Firing Devices:	Six drip torches, 15 gal mix. Veri pistol with 50 rounds. Aerial ignition may be needed.

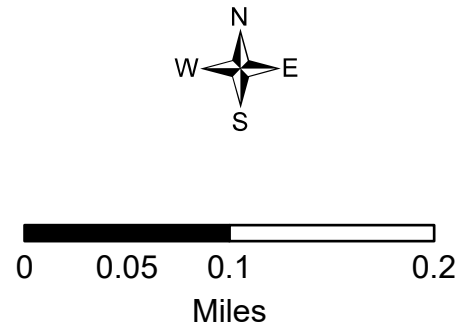
FZ 3 - Grand Loop Road	
Holding:	Two type 6 or greater engines.
Firing/Holding:	One Type II IA crew or better.
Water Source:	Hydrants in employee area.
Firing Devices:	Six drip torches, 15 gal mix. Veri pistol with 50 rounds. Aerial ignition recommended to create more depth.



Files: CNES/Airbus DS, USGS, USGS AeroGRID, IGN, and the GIS User Community, Sources: Esri, Airbus DS, USGS, NGA, NOAA, CGAR, Robinson, NCEAS, NLS, OS, NIMA, Geodatasireken, Rijkswaterstaat, GSA, Geoland, FEMA, Intermap, and the GIS user community



Old Faithful Firing Zone Plan
Lone Star
WY-YNP-002006



- ✚ Hydrants
- Firing Line
- YELL Base Data
- Trails
- YELL Transportation
- Roads
- Building Polygons

