

Refer to the document 'Old Faithful Firing/Holding Plan' on the NIFC FTP site that is accessed by the QR code on this map.

Hose Lay 1	
# Needed	Supply Need
6	1.5" 100' Hose
6	1" 100' Hose
6	1" Nozzle
6	Sprinklers
12	1.5" Gated Wye
12	1.5"-1" Reducer
12	1"-3/4" Reducer
2	Mark III Pump Kit

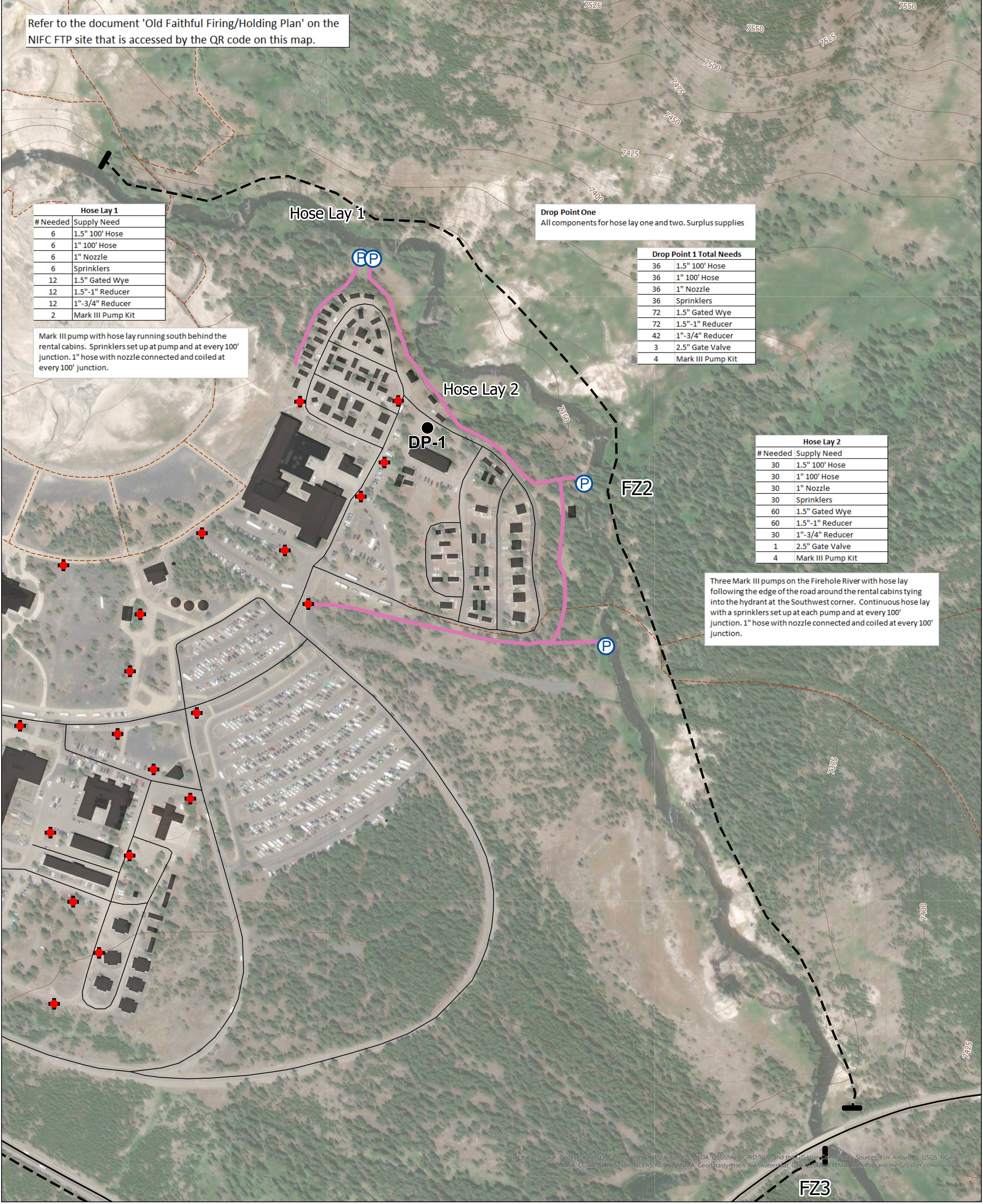
Mark III pump with hose lay running south behind the rental cabins. Sprinklers set up at pump and at every 100' junction. 1" hose with nozzle connected and coiled at every 100' junction.

Drop Point One
All components for hose lay one and two. Surplus supplies

Drop Point 1 Total Needs	
36	1.5" 100' Hose
36	1" 100' Hose
36	1" Nozzle
36	Sprinklers
72	1.5" Gated Wye
72	1.5"-1" Reducer
42	1"-3/4" Reducer
3	2.5" Gate Valve
4	Mark III Pump Kit

Hose Lay 2	
# Needed	Supply Need
30	1.5" 100' Hose
30	1" 100' Hose
30	1" Nozzle
30	Sprinklers
60	1.5" Gated Wye
60	1.5"-1" Reducer
30	1"-3/4" Reducer
1	2.5" Gate Valve
4	Mark III Pump Kit

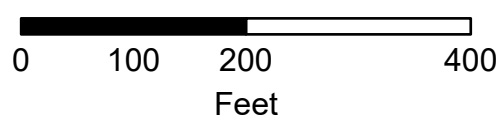
Three Mark III pumps on the Firehole River with hose lay following the edge of the road around the rental cabins tying into the hydrant at the Southwest corner. Continuous hose lay with a sprinklers set up at each pump and at every 100' junction. 1" hose with nozzle connected and coiled at every 100' junction.



Source: Esri, Maxar, GeoEye, Earthstar Geographics, CNES/Airbus DS, USDA, USGS, AeroGRID, IGN, and the GIS User Community. Sources: Esri, Airbus DS, USGS, NGA, NASA, CGLAR, Nippon, NCEAS, NLS, OS, NMA, Geodatastyrelsen, Rijkswaterstaat, GSA, Geoland, FEMA, Intermap and the GIS user community.



Point Protection Plan
Holding Plan, FZ2
Old Faithful Inn - Cabins



5' contour lines

- + Hydrants
- Drop Point
- Accountable Property
- P Pump
- Firing Line
- Hose Lay
- YELL Base Data
- Trails
- Roads
- Building Polygons



A. Throop
9/6/2020 2130

North American 1983 Datum. Lat/Long Grid