

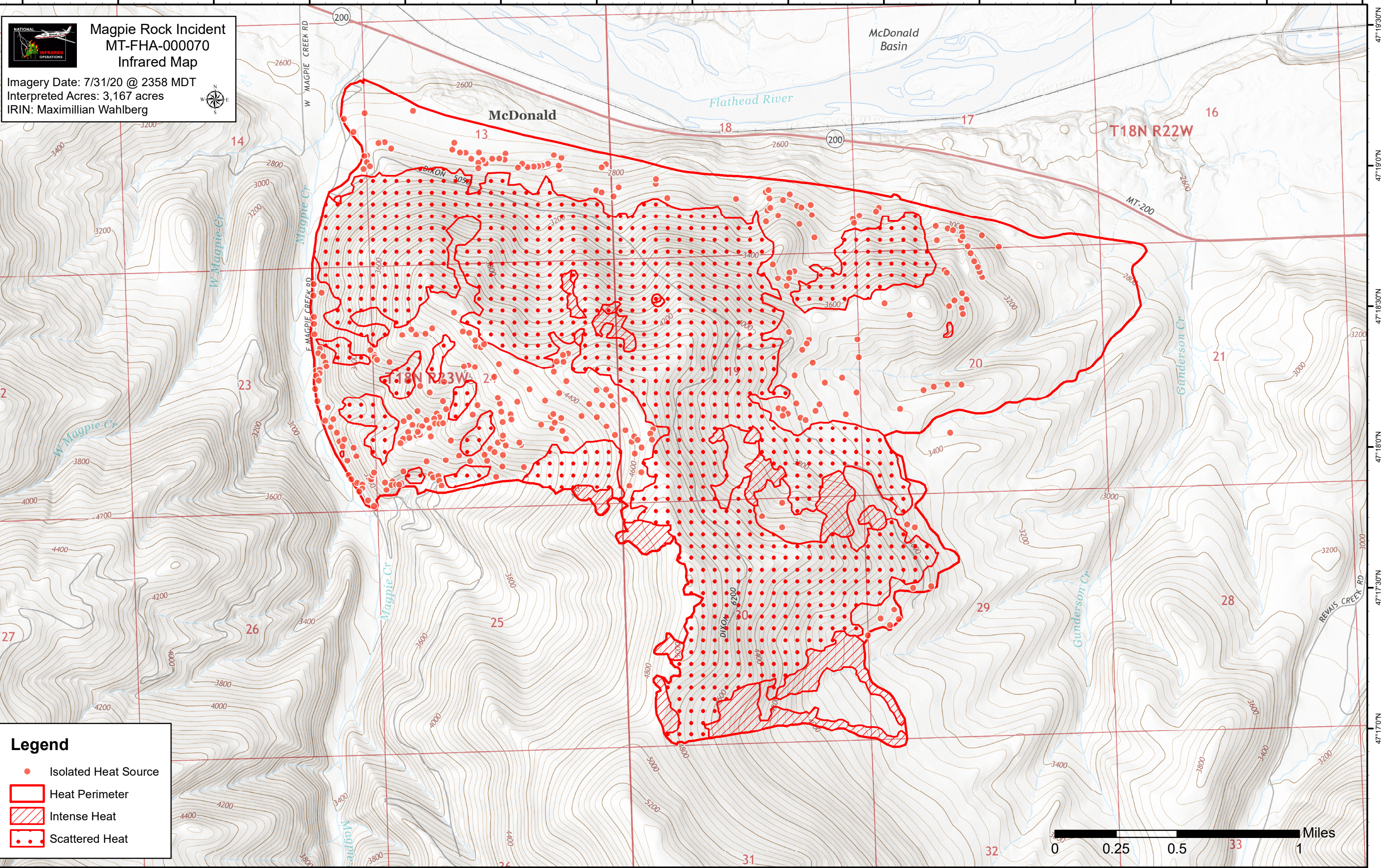


114°30'30"W 114°30'0"W 114°29'30"W 114°29'0"W 114°28'30"W 114°28'0"W 114°27'30"W 114°27'0"W 114°26'30"W 114°26'0"W 114°25'30"W 114°25'0"W 114°24'30"W 114°24'0"W 114°23'30"W

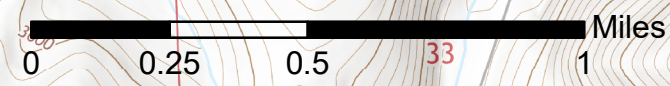
**Magpie Rock Incident**  
**MT-FHA-000070**  
**Infrared Map**

Imagery Date: 7/31/20 @ 2358 MDT  
 Interpreted Acres: 3,167 acres  
 IRIN: Maximillian Wahlberg

**Legend**

- Isolated Heat Source
- Heat Perimeter
- Intense Heat
- Scattered Heat



114°30'30"W 114°30'0"W 114°29'30"W 114°29'0"W 114°28'30"W 114°28'0"W 114°27'30"W 114°27'0"W 114°26'30"W 114°26'0"W 114°25'30"W 114°25'0"W 114°24'30"W 114°24'0"W