

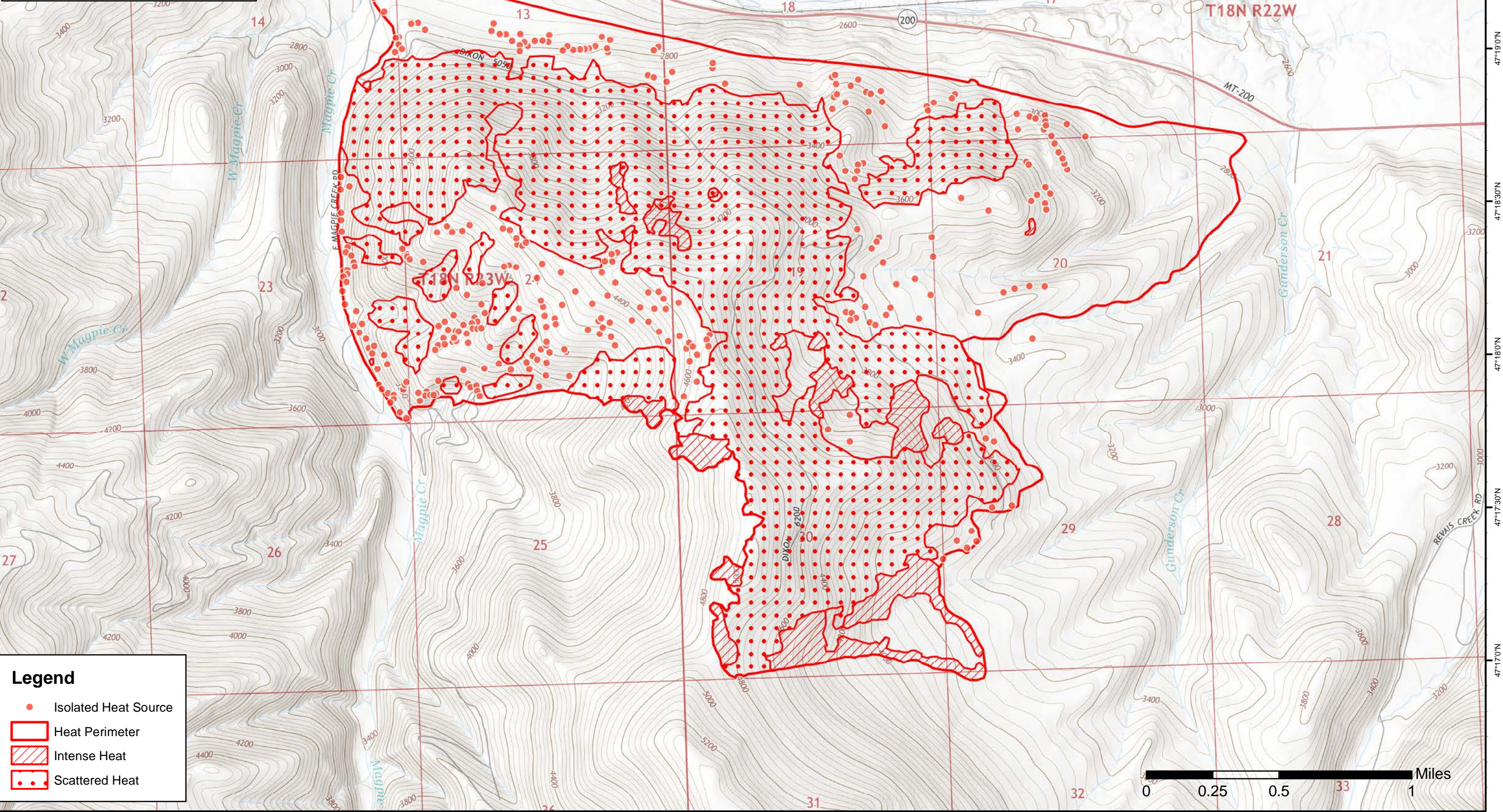


114°30'30"W 114°30'0"W 114°29'30"W 114°29'0"W 114°28'30"W 114°28'0"W 114°27'30"W 114°27'0"W 114°26'30"W 114°26'0"W 114°25'30"W 114°25'0"W 114°24'30"W 114°24'0"W 114°23'30"W

Magpie Rock Incident
MT-FHA-000070
Infrared Map

Imagery Date: 7/31/20 @ 2358 MDT
 Interpreted Acres: 3,167 acres
 IRIN: Maximillian Wahlberg

Legend

- Isolated Heat Source
- Heat Perimeter
- ▨ Intense Heat
- Scattered Heat



114°30'30"W 114°30'0"W 114°29'30"W 114°29'0"W 114°28'30"W 114°28'0"W 114°27'30"W 114°27'0"W 114°26'30"W 114°26'0"W 114°25'30"W 114°25'0"W 114°24'30"W 114°24'0"W

47°19'30"N
47°19'0"N
47°18'30"N
47°18'0"N
47°17'30"N
47°17'0"N

47°19'30"N
47°19'0"N
47°18'30"N
47°18'0"N
47°17'30"N
47°17'0"N