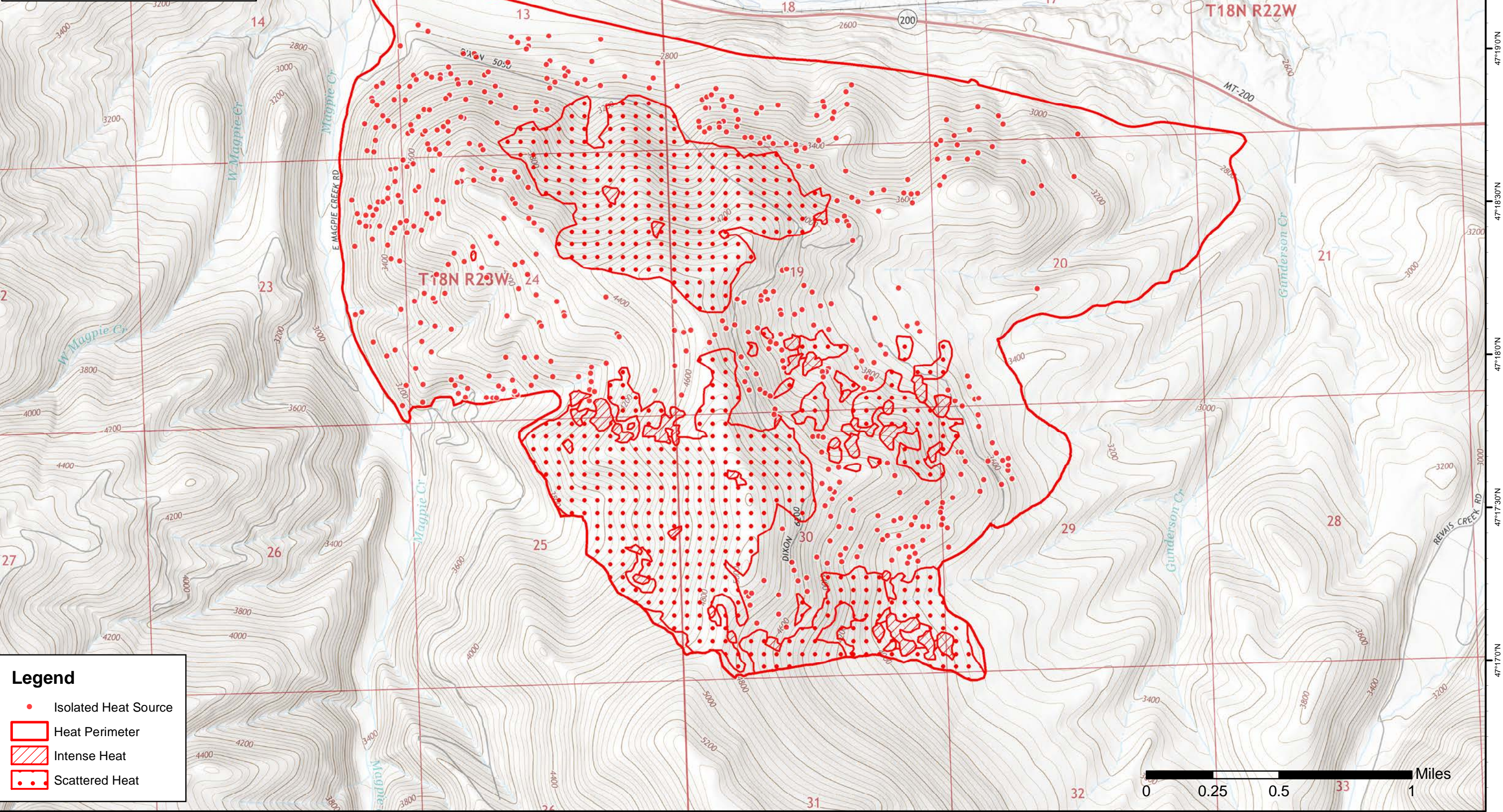


114°30'30"W 114°30'0"W 114°29'30"W 114°29'0"W 114°28'30"W 114°28'0"W 114°27'30"W 114°27'0"W 114°26'30"W 114°26'0"W 114°25'30"W 114°25'0"W 114°24'30"W 114°24'0"W 114°23'30"W

**Magpie Rock Incident**  
**MT-FHA-000070**  
**Infrared Map**

Imagery Date: 8/2/20 @ 2330 MDT  
 Interpreted Acres: 3,528 acres  
 IRIN: Maximillian Wahlberg





**Legend**

- Isolated Heat Source
- Heat Perimeter
- Intense Heat
- Scattered Heat



114°30'30"W 114°30'0"W 114°29'30"W 114°29'0"W 114°28'30"W 114°28'0"W 114°27'30"W 114°27'0"W 114°26'30"W 114°26'0"W 114°25'30"W 114°25'0"W 114°24'30"W 114°24'0"W

47°19'30"N  
47°19'0"N  
47°18'30"N  
47°18'0"N  
47°17'30"N  
47°17'0"N

47°19'30"N  
47°19'0"N  
47°18'30"N  
47°18'0"N  
47°17'30"N  
47°17'0"N