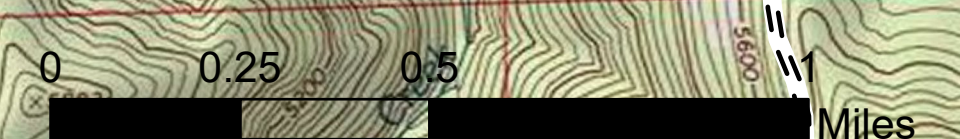
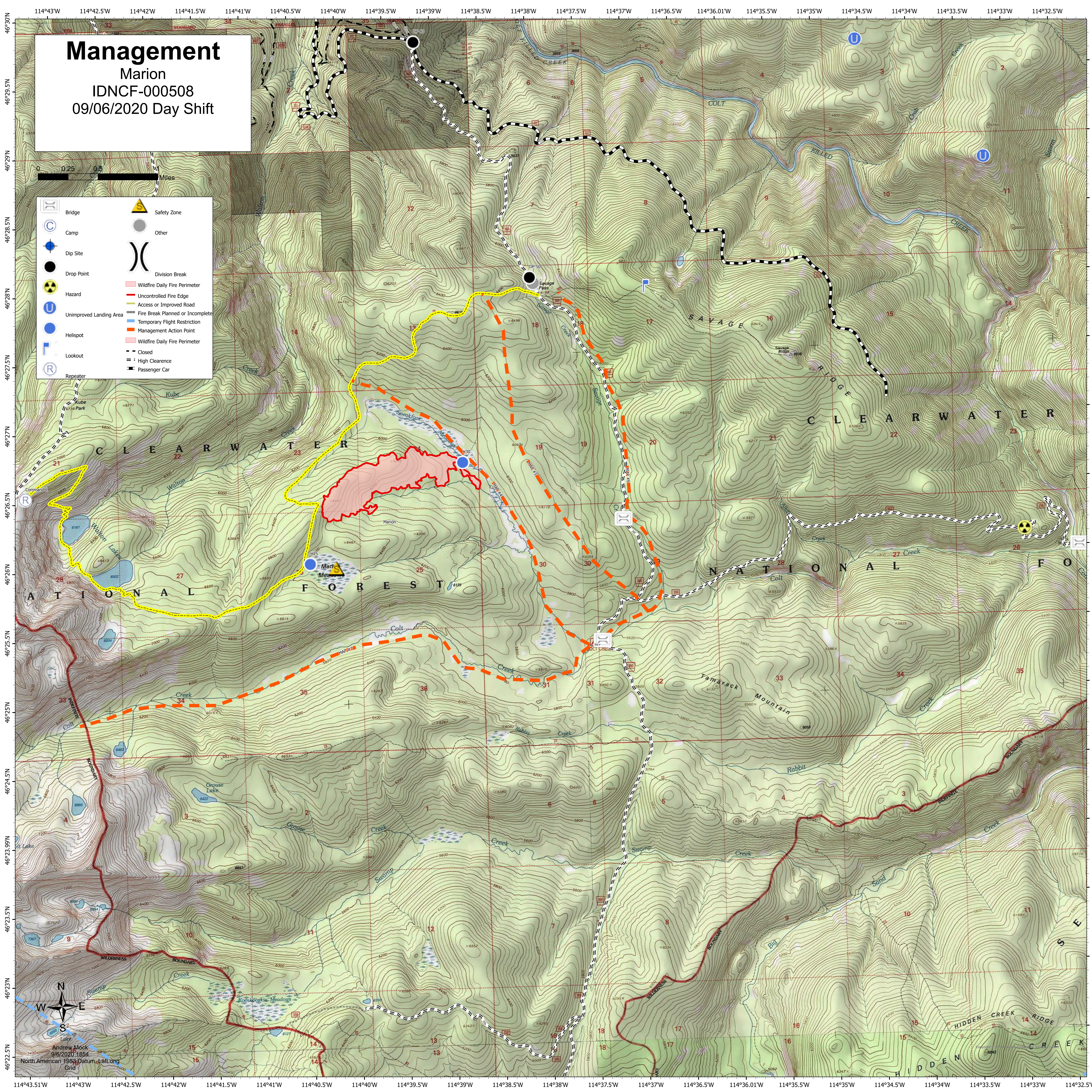


Management
 Marion
 IDNCF-000508
 09/06/2020 Day Shift

Management Action Point (MAP)





MAP #1 – Sneakfoot- Keep fire west of Sneakfoot Meadows.- Consider areal resources for spot fires east of Sneakfoot Meadows.- Consider ground resources for spot fires east of Sneakfoot Meadows, dependent upon fire activity, weather, and time of day/year.

MAP #2 – Savage Pass- Keep fire south of Savage Ridge Trail.- Consider aerial resources for spot fires north of Savage Ridge Trail.- Consider ground resources for spot fires north of Savage Ridge Trail dependent upon fire activity, terrain, weather, and time of day/year.

MAP #3 – TOM BEAL- Keep fire east of NFSR #362.- Consider aerial resources for spot fires west of Tom Beal MAP.-Consider ground resources for spot fires west of Tom Beal MAP dependent upon fire activity, terrain, weather, and time of day/year.

MAP #4 – SNEAKFOOT EAST- Once fire establishes east of Sneakfoot Meadows, consider closing NFSR #360 dependent upon fire activity, weather, time of year.- Consider notifying public along NFSR #360 to leave the area dependent upon fire activity, weather, and time of year.- Consider ordering two masticators or two type 2 IA handcrews and two woodchippers to create a shaded fuel break along west side of NFSR #360 between Savage Creek and Colt Creek dependent upon fire activity, weather, and time of year.- Consider ordering a resource advisor if equipment will be utilized.

MAP #5 – SNEAKFOOT RIDGE- Consider utilizing pumpkins and sprinkler kits to protect Savage Pass Snotel site, consider utilizing structure wrap on rubber snow pillows at Savage Pass Snotel site. Pump and sprinkler supplies are located at the Powell Ranger District fire cache. Activities are dependent upon fire activity, weather, and time of year.- Consider utilizing pump and sprinkler kits for Savage Creek bridge, Colt Creek bridge, and Colt Creek dispersed recreation site. Activities are dependent upon fire activity, weather, and time of year- Consider ordering felling teams to remove hazard trees along both sides of NFSR #360 from Savage Pass to Colt Creek, dependent upon fire activity, weather, and time of year.- Consider ordering hand crews and engine modules to keep fire west of NFSR #360 dependent upon fire activity, weather, and time of year.

MAP #6 – NFSR #360- If fire becomes established across NFSR #360, consider ordering pumps and sprinkler kits to protect, Colt Creek camp bridge, outhouse, and portal sign, dependent upon fire activity, weather and time of year. Supplies will need to be flown in as NFSR #360 is washed out five miles in. - Consider ordering feller bunchers and felling teams to remove hazard trees along NFSR #360. - If equipment will be utilized, consider ordering a resource advisor. - Consider utilizing road quads and pilot cars to escort remaining public out of fire area.

MAP #7 – COLT CREEK- Identify and triage additional infrastructure and values at risk south of Colt creek.