

OLD BALDY FIRE

BEAVERHEAD-DEERLODGE NATIONAL FOREST

MT-BDF-006591 P1NC2D20 (0102)

INCIDENT ACTION PLAN

AUGUST 6, 2020

to

AUGUST 8, 2020

DAY 0600 - 2200

Ops TOPO



Ops Aerial



ArcGIS Collector Info



IAP



INCIDENT OBJECTIVES	1. Incident Name Old Baldy Fire	2. Date Prepared 8/5/2020	3. Time Prepared 1800
4. Operational Period			
Thursday August 6, 2020 – Saturday August 8, 2020 DAY SHIFT 0600 - 2200			
5. Leaders Intent:			
6. Incident Objectives:			
<ul style="list-style-type: none"> • Protect structures threatened by fire along the Wisconsin Creek road (Forest road 157) (Identified in the Madison County Structure Assessment) to prevent loss of valued resources and assets of private residences and infrastructure. • Protect archaeological sites that have been identified by the South Zone Archeologist to avoid loss or damage to cultural resources. • Protect roadless area integrity in the fire planning area by avoiding suppression lines or activities that would encourage future motorized use. • Minimize the spread of Aquatic Invasive Species and Noxious Weeds by working with the READ and other appropriate agency personnel. • Communicate fire related information to, and engage stakeholders, cooperators, permittees, and localized publics early, often, and as the incident changes. Communicate a common message thru all channels. • Develop and evaluate options and contingencies for the long-term management of the fire as the fire approaches management action points. 			
6. Weather Forecast – See Attached			
8. General Safety Message – See Attached			
9. ATTACHEMENTS (X IF ATTACHED)			
[X] Organization List - ICS 203	[X] Medical Plan - ICS 206	[] _____	_____
[X] Division Assignment Lists - ICS 204	[X] Unit Log 214	[] _____	_____
	[X] WF206 9 Line	[] _____	_____
10. Prepared By (Planning Section Chief)		11. Approved By (Incident Commander)	
Anya Moline			

ORGANIZATION ASSIGNMENT LIST				Operations Section	
1. Incident Name		Old Baldy Fire		Operations	Sam Cox/Mike Dunn (t)
2. Date Prepared	08/05/2020	3. Time Prepared	1800		
4. Operational Period					
Thursday August 6, 2020 – Saturday August 8, 2020				0600 - 2200	
Incident Commander and Staff				Division Alpha	
Incident Commander		Paul Roose/Dean Chambers (t)		Division	Kurt Rohrbach
Safety Officer		Brian Wilson/Dave Paden (t)			
Information Officer		Sara Rouse/Amy Baumer			
Liaison Officer					
Medical Section Chief					
Agency Representative				Division Zulu	
USFS Agency Admin		Dale Olsen		Division	Seth Patton
DNRC		Don Copple			
Madison County		Joe Brummel			
USFS READ		Randle Anderson			
USFS READ		Ashley Dettmann			
USFS LEO		Noah Peiprzyca			
Planning Section					
Section Chief		Anya Moline/Matt Todd			
Situation Unit		Jon Rieck (remote)			
Demobilization Unit					
Resources Unit Leader					
Status Check-in					
Fire Behavior Analyst					
Long-Term Analyst					
Air Resource Advisor				Air Operations Branch	
GIS Specialist				Helibase Manager	Mike Ryan/Randy Gilbert (t)
Computer Specialist				Air Support Group Supervisor	
Training Specialist				Air Tactical Group Supervisor	
Meteorologist					
Human Resource				Finance Section	
Documentation Unit				Section Chief	Jeanna Roose/Biddy Simet
Logistics Section				Time Unit	
Section Chief		Roger Olsen/Darcy Wheeler/Chris Hericks		Equipment Time	
Ordering Manager				Personnel Time	
Supply Unit				Cost Unit	
Facilities Unit				Procurement Unit Leader	
Base Camp				Comps / Claims	
Ground Support Unit					
Communications Unit					
Communications Tech					
Medical Unit					
Food Unit					
Security Manager				Prepared by:	Anya Moline - RESL

Old Baldy Fire

National Weather Service Missoula

2020-08-05 5:10 PM MDT

Spot Forecast for Old Baldy Fire
National Weather Service Missoula MT
511 PM MDT Wed Aug 5 2020

Forecast is based on forecast start time of 1800 MDT on August 05.
If conditions become unrepresentative...contact the National Weather Service.

.DISCUSSION...

Isolated thunderstorms will continue in the area through mid-evening, surface conditions are quite dry so any storms will be capable of erratic outflows up to 45 MPH. Another round of showers or thunderstorms are expected after daybreak Thursday, once again conditions will be good for strong and erratic outflows. Between 0200 and 0600 Friday morning a cold front will pass through the area, bringing yet another round of showers and thunderstorms. This will set up a breezy day on Friday.

.TONIGHT...

- * Sky/Weather.....Mostly clear to partly cloudy. Chance of rain showers and slight chance of thunderstorms in the evening.
- * CWR (> 0.10 Inch)...Less than 10 percent.
- * LAL.....2.
- * Min Temperature.....48-53.
- * Max Humidity.....47-52 percent.
- * Wind (20 ft).....East 5-8 mph.
- * Mixing Height.....11000 ft agl decreasing to less than 100 ft agl after sunset.
- * Mixing Winds.....South 10 mph.
- * Precip Amount.....0.00 inches.

.THURSDAY...

- * Sky/Weather.....Mostly cloudy. Slight chance of rain showers and thunderstorms in the morning, then chance of rain showers and slight chance of thunderstorms in the afternoon.
- * CWR (> 0.10 Inch)...20 percent.
- * LAL.....2.
- * Max Temperature.....66-71.
- * Min Humidity.....28-33 percent.
- * Wind (20 ft).....South 5-6 mph increasing to 9-17 mph in the afternoon.
- * Mixing Height.....Less than 100 ft agl increasing to 8000 ft agl in the afternoon.
- * Mixing Winds.....South 15 mph.
- * Haines Index.....4 low.
- * Precip Amount.....0.04 inches.

.THURSDAY NIGHT...

- * Sky/Weather.....Mostly cloudy then becoming mostly clear.

Chance of rain showers and slight chance of thunderstorms in the evening.

- * CWR (> 0.10 Inch)...Less than 10 percent.
- * LAL.....2.
- * Min Temperature.....42-47.
- * Max Humidity.....72-77 percent.
- * Wind (20 ft).....Southwest 8-15 mph.
- * Mixing Height.....8000 ft agl decreasing to less than 100 ft agl after sunset.
- * Mixing Winds.....Southwest 15 mph.
- * Precip Amount.....0.00 inches.

.FRIDAY...

- * Sky/Weather.....Mostly sunny.
- * CWR (> 0.10 Inch)...0 percent.
- * LAL.....1.
- * Max Temperature.....59-64.
- * Min Humidity.....18-23 percent.
- * Wind (20 ft).....Southwest 9-14 mph with gusts to around 20 mph.
- * Mixing Height.....Less than 100 ft agl increasing to 8000 ft agl in the afternoon.
- * Mixing Winds.....Southwest 15 mph.
- * Haines Index.....4 low.
- * Precip Amount.....0.00 inches.

ICS-220 AIR OPERATIONS SUMMARY

Prepared By: Mike M. Ryan

08/04/2020

Prepared Time: 1830

1. INCIDENT NAME: <i>Old Baldy</i>	2. OP/S PERIOD DATE: 08-06-2020 to 08-08-2020	START TIME: 0900	END TIME: 2100	SUNRISE DILLON: 0622	SUNSET: Dillon: 2050	Pumpkin: Dillon: 2120
--	---	----------------------------	--------------------------	--------------------------------	--------------------------------	---------------------------------

<p>3. REMARKS (Safety Notes, Hazards, Air Operations Special Equipment, etc.):</p> <p>Assess mission complexity and the Benefit/Risk of the mission. Ensure visibility and winds are adequate to safely conduct flight operations. Ensure safe vertical & horizontal separation between aircraft in smoky conditions. Call in and out of the dips. Smoky conditions can hamper aviation operations adhere to visibility limitations, and DO NOT be pressured into accepting a mission that you know or feel is unsafe! <i>(Terminate air operations at sunset...use last 1/2 for RTB. (exceptions allowed—communicate intent)</i></p>	<p>4. READY ALERT AIRCRAFT *Call Dispatch to order Air Ambulances.</p> <p><u>Hospitals w Type 2 Approve LZ's</u> -Butte- St. James 46 00.541 x 112 32.670 -Dillon-Barrett 42 12 .131 x 112 38.790 -Ennis-Madison Valley 45 21.146 x 111 43.924</p> <p>White Freq: 155.280 Tan Freq: 155.340</p>	<p>5.</p> <p>Old Baldy: 0/7474 Freq:120.200 5NM Circle Altitude: Surface to 13000 MSL</p>
--	---	---

6. POSITION	NAME	PHONE #	7. FREQUENCIES	AM	FM	8. FIXED-WING
Forest Aviation Officer	Dennis A. Morton	406.660.2318	Beaverhead West Direct		172.350 Both TX/RX TT 123.0	ORDER AIRCRAFT THRU ATGS or TWIN BRIDGES HELIBASE
ASGS(t)	Mike Ryan	406.925.1337	Beaverhead East Direct		171.425 TX/RX TT 123.0	<u>AIRTANKERS</u> Order thru ATGS or DDC
HEBM(T)	Randy Gilbert	406.925.3779	Deerlodge Direct		172.325 Both TX/RX TT 123.0	<u>SEATS</u> Order thru ATGS or DDC
ATGS	Everett Wineger	406.381.4176	National Flight Follow		168.6500 110.9 TX/RX	<u>AIR ATTACK</u> Order through Twin Bridges Helibase, Old Baldy Air Attack available from Butte, mid morning 8/5
Dillon Dispatch	Aircraft Desk	406.683.3975	A/G 29 A/G 26		166.900 TX/RX 166.6875 TX/RX	<u>Forest Detection</u> N9610G
N144MA	Dan Campbell	406.529.8019	Old Baldy A/A BD A/A Primary BD A/A Secondary	120.200 119.625 134.150		
N3181F	Billy Groves	406.599.7161	DNRC A/G Yellow DNRC A/G Orange		151.220 TX/RX 151.400 TX/RX	<u>Mail Costs Daily to:</u> randy.j.gilbert@usda.gov
N116	Jerrid Silva	406.381.5693	AIR GUARD		168.6250 110.9 TX/RX	B-D PCODES: B-D ABC Misc: P1EKS320 (0102) B-D Large Fire: P1EK3V20 (0102) Old Baldy Fire: P1NC2D20 (0102)
562AJ	Doug Demoss	406.360.0481				
NOTES:						
PLANNED MISSIONS:						

9. HELICOPTERS

CALL SIGN / FAA N#	TY	MAKE/ MODEL	BASE	Start	Avail	REMARKS	CALL SIGN / FAA N#	TY	MAKE/ MODEL	BASE	Start	AVAIL	REMARKS
144MA	3	Bell 407	Twin Bridges	0900	0930	EU, Forest IA	562AJ	1	CH-47	DLN	0900	0930	EU
3181F	2	UH-1H	Twin Bridges	0900	0930	EU	116	1	Kmax K1200	Twin Bridges	0900	0930	CWN

Visibility Limitations VFR Flight Helicopters

Day

1/2 statute
mile

Clear of
clouds

Wind Restrictions For Helicopters

Flights above ground level	Flight Permitted in Winds Less than / Maximum Gust Spread		
	Type 1 Helicopters	Type 2 Helicopters	Type 3 Helicopters
More than 500' AGL	<50kts / Gusts: N/A	<50kts / Gusts: N/A	<50kts / Gusts: N/A
Less than 500' AGL	<40kts / Max Gust Spread: 15kts	<40 kts / Max Gust Spread: 15kts	<30kts / Max Gust Spread: 15kts

Quote of the day

**“Watch what people are cynical about, and one can often discover what they lack.”
-General G. S. Patton**

INCIDENT RADIO COMMUNICATIONS PLAN		Incident Old Baldy Fire			Date/Time Prepared 08/04/2020 1800			Operational Period Date/Time 08/05/2020 0600-2200	
Ch #	Channel Name	RX Freq	N or W	RX Tone/NAC	TX Freq	N or W	Tx Tone/NAC	Assignment	Remarks
1	PROJECT	168.750			168.750				
2	EAST RPT	171.425			164.700		2/5/6		Tx Tone: 2- Lazyman, 5-S.Baldy, 6- Elk Lake
3	DRLG RPT	172.325			164.825				
4	MAD CO D	Emergency			Only		Tone 11		
5	MAD VF TAC	154.400			154.400		Tone 13		
6	SOA 1 (BLM SCENE-OF-A)	168.225			168.225				
7	R1 FIRE TAC	167.1125			167.1125				
8	WHITE (EMS local)	155.280			155.280				
9	RED (Fire Co-op)	154.070			154.070				
10	YELLOW (DNRC A/G)	151.220			151.220				
11	SCARLET	154.2950			154.2950				
12	COM 1	168.6125			168.6125				
13	A/G #29 (BD A/G1)	166.900			166.900				
14	A/G #26 (BD A/G2)	166.6875			166.6875				
15	TAN (EMS A2G)	155.340			155.340				
16	WEST RPT	172.350			165.750		See list		
Prepared By (Communications Unit)				REMARKS					

HEALTH AND SAFETY MESSAGE

INCIDENT: Old Baldy **DATE:** August 6_8, 2020

Major Hazards and Risks: Spike Camp Safety

Spike Camp Safety:

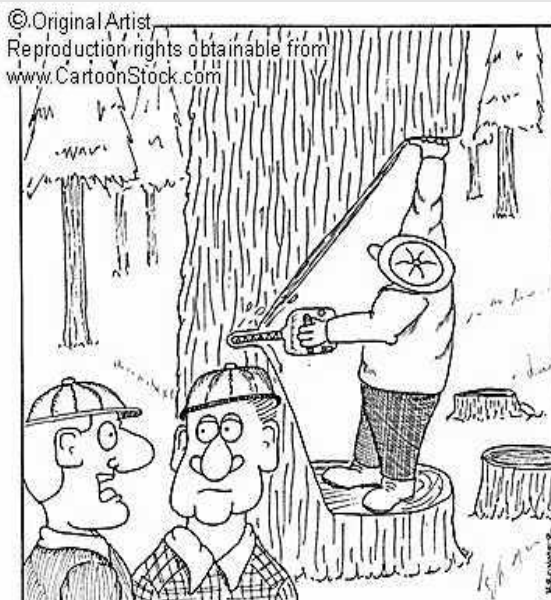
COVID

- Camp as modules
- Maintain 6' spacing while talking to people outside your module, use face coverings if this is not possible
- Avoid using common coolers
- Do not use common wash basins
- Use hand sanitizer often, especially after you touch common surfaces
- Do not share utensils, cups, plates, etc...

General

- General camp hygiene needs to be top priority. Colds, flues, strep, etc are not easily distinguishable from COVID symptoms
- Store all food/garbage in bear proof containers. BE BEAR AWARE
- Make sure your camp location is free of snags...Remember green trees tend to fall over after the canopy opens.
- Consolidate and secure camp gear away from helispots in order to prevent rotor strikes
- If thunderstorms are present do not camp on ridges

If there is an issue in the middle of the night work through the chain of command in order to get emergency services, utilize 9 line, notify safety and local agency administrator



TELL JOHNSON THAT THE SAFETY OFFICER WOULD LIKE TO SPEAK WITH HIM...THE SOONER THE BETTER

Fire Order of the Day:

Give clear instructions and insure they are understood!

- **Task = What is to be done**
- **Purpose = Why it needs to be done**
- **End State = How it should look when completed**

Old Baldy: Wilson, Paden(t)

Stop Germs! Wash Your Hands.

When?

- After using the bathroom
- Before, during, and after preparing food
- Before eating food
- Before and after caring for someone at home who is sick with vomiting or diarrhea
- After changing diapers or cleaning up a child who has used the toilet
- After blowing your nose, coughing, or sneezing
- After touching an animal, animal feed, or animal waste
- After handling pet food or pet treats
- After touching garbage



How?



Wet your hands with clean, running water (warm or cold), turn off the tap, and apply soap.



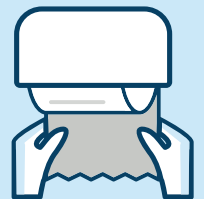
Lather your hands by rubbing them together with the soap. Be sure to lather the backs of your hands, between your fingers, and under your nails.



Scrub your hands for at least 20 seconds. Need a timer? Hum the “Happy Birthday” song from beginning to end twice.



Rinse hands well under clean, running water.



Dry hands using a clean towel or air dry them.

Keeping hands clean is one of the most important things we can do to stop the spread of germs and stay healthy.

LIFE IS BETTER WITH

CLEAN HANDS



www.cdc.gov/handwashing

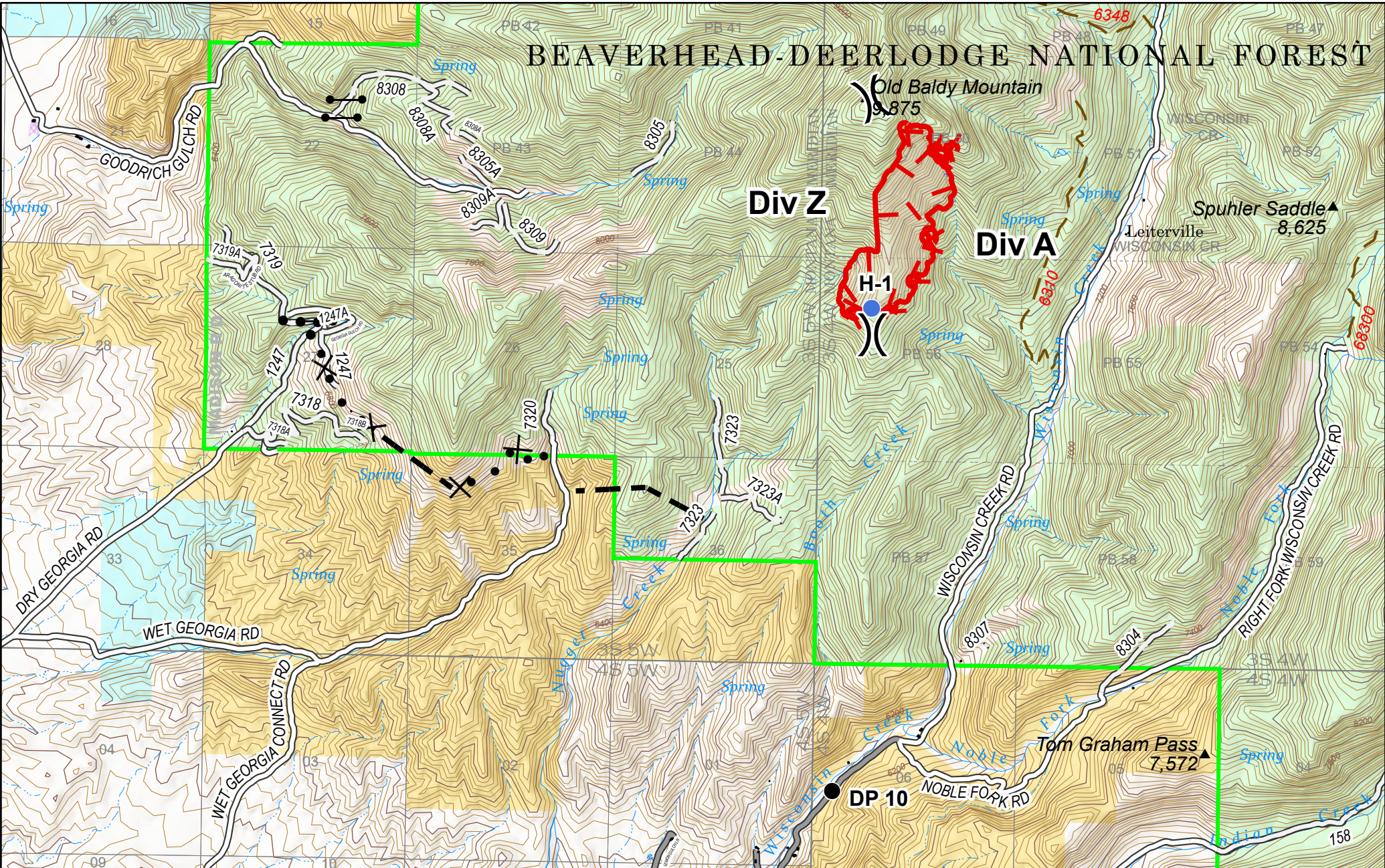
This material was developed by CDC. The Life is Better with Clean Hands Campaign is made possible by a partnership between the CDC Foundation, GOJO, and Staples. HHS/CDC does not endorse commercial products, services, or companies.



CS310027-A

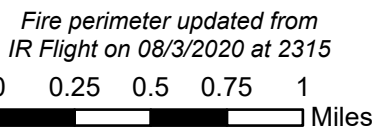
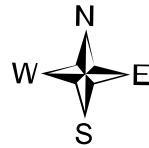
4ICS-206 MEDICAL PLAN	1. Incident Name Old Baldy	2. Date Prepared 08/5/2020	3. Time Prepared 1830	4. Operational Period 08/6/2020 to 8/82020				
5. Incident Medical Aid Station								
Medical Unit	Location			Level of Care				
None	None			ALS	BLS X			
6. Transportation								
A. Ground Ambulance Services								
Name	Address	Phone	Level of Care					
Ruby Valley Ambulance	Sheridan, MT	911 or (406) 843-5301	ALS	BLS				
Beaverhead Emergency Services	Dillon, MT	911 or (406)683-3771						
B. Air Medivac Services								
Name	Location	Level of Care						
Air Idaho Rescue	West Yellowstone (208)529-2343		ALS	BLS				
Life Flight	Missoula & Butte (800)991-7363							
Summit Air	Belgrade (877)554-9111							
7. Hospitals								
Name	Address	Travel Time		Phone	Helipad		Burn Center	
		Air	Grnd		Yes	No	Yes	No
Barrett Hospital & Health Care	600 State HWY 91s, Dillon, MT Lat 42 12.131 Long 112 38.790	15 min	45 min	406-683-3000	X			
Eastern Idaho Regional Medical Center	3100 Channing Way, Idaho Falls ID Lat 43 28.29 Long 111 59.49	60 min	2 hrs	208-529-6111	X			X
University of Utah	50 North Medical Dr. Salt Lake UT Lat 40 46.13 Long 111 50.08	1.5 hrs	5 hrs	801-581-2700	X		X	
8. Medical Emergency Procedures								
9 Line Medical Incident Report on Back of IAP								
Prepared by David Paden SOFR(t)					10. Reviewed by			

BEAVERHEAD-DEERLODGE NATIONAL FOREST



IAP

Old Baldy
 MT-BDF-006591
 August 5, 2020
 128 acres



- Drop Point
- ⋯ Gate
- Helispot
-) (Division Break
- └─● Uncontrolled Fire Edge
- └─● Proposed Dozer Line
- └─ Planned Fire Line
- Planned Secondary Line

- Wildfire Daily Fire Perimeter
- USFS Roads**
- Road, Not Maintained for Passenger Car
- HIFLD National Roads**
- National Roads**
- Roads, Paved

- Roads, Other
- USFS Trails**
- 1 - Not Designated
- OWNER**
- State of Montana
- US Bureau of Land Management
- US Forest Service

MEDICAL PLAN (ICS 206 WF)

Controlled Unclassified Information//Basic

Medical Incident Report

FOR A NON-EMERGENCY INCIDENT, WORK THROUGH CHAIN OF COMMAND TO REPORT AND TRANSPORT INJURED PERSONNEL AS NECESSARY.

FOR A MEDICAL EMERGENCY: IDENTIFY ON SCENE INCIDENT COMMANDER BY NAME AND POSITION AND ANNOUNCE "MEDICAL EMERGENCY" TO INITIATE RESPONSE FROM IMT COMMUNICATIONS/DISPATCH.

Use the following items to communicate situation to communications/dispatch.

1. CONTACT COMMUNICATIONS / DISPATCH (Verify correct frequency prior to starting report)

Ex: "Communications, Div. Alpha. Stand-by for Emergency Traffic."

2. INCIDENT STATUS: Provide incident summary (including number of patients) and command structure.

Ex: "Communications, I have a Red priority patient, unconscious, struck by a falling tree. Requesting air ambulance to Forest Road 1 at (Lat./Long.) This will be the Trout Meadow Medical, IC is TFLD Jones. EMT Smith is providing medical care."

Severity of Emergency / Transport Priority	<input type="checkbox"/> RED / PRIORITY 1 Life or limb threatening injury or illness. Evacuation need is IMMEDIATE <i>Ex: Unconscious, difficulty breathing, bleeding severely, 2° – 3° burns more than 4 palm sizes, heat stroke, disoriented.</i> <input type="checkbox"/> YELLOW / PRIORITY 2 Serious Injury or illness. Evacuation may be DELAYED if necessary. <i>Ex: Significant trauma, unable to walk, 2° – 3° burns not more than 1-3 palm sizes.</i> <input type="checkbox"/> GREEN / PRIORITY 3 Minor Injury or illness. Non-Emergency transport <i>Ex: Sprains, strains, minor heat-related illness.</i>	
Nature of Injury or Illness & Mechanism of Injury		<i>Brief Summary of Injury or Illness (Ex: Unconscious, Struck by Falling Tree)</i>
Transport Request		<i>Air Ambulance / Short Haul/Hoist Ground Ambulance / Other</i>
Patient Location		<i>Descriptive Location & Lat. / Long. (WGS84)</i>
Incident Name		<i>Geographic Name + "Medical" (Ex: Trout Meadow Medical)</i>
On-Scene Incident Commander		<i>Name of on-scene IC of Incident within an Incident (Ex: TFLD Jones)</i>
Patient Care		<i>Name of Care Provider (Ex: EMT Smith)</i>

3. INITIAL PATIENT ASSESSMENT: Complete this section for each patient as applicable (start with the most severe patient)

Patient Assessment: See IRPG page 106

Treatment:

4. TRANSPORT PLAN:

Evacuation Location (if different): (Descriptive Location (drop point, intersection, etc.) or Lat. / Long.) Patient's ETA to Evacuation Location:

Helispot / Extraction Site Size and Hazards:

5. ADDITIONAL RESOURCES / EQUIPMENT NEEDS:

Example: Paramedic/EMT, Crews, Immobilization Devices, AED, Oxygen, Trauma Bag, IV/Fluid(s), Splints, Rope rescue, Wheeled litter, HAZMAT, Extrication

6. COMMUNICATIONS: Identify State Air/Ground EMS Frequencies and Hospital Contacts as applicable

Function	Channel Name/Number	Receive (RX)	Tone/NAC *	Transmit (TX)	Tone/NAC *
COMMAND					
AIR-TO-GRND					
TACTICAL					

7. CONTINGENCY: Considerations: If primary options fail, what actions can be implemented in conjunction with primary evacuation method? Be thinking ahead.

8. ADDITIONAL INFORMATION: Updates/Changes, etc.

REMEMBER: Confirm ETA's of resources ordered. Act according to your level of training. Be Alert. Keep Calm. Think Clearly. Act Decisively.

