

113°12'0"W


113°10'0"W

**Infrared Map**  
 Shale Creek (MT-BDF-006629)  
 Map Date: 08/23/2020  
 Imagery Date: 08/23/2020  
 Imagery Time: 0031 MDT  
 IR Interpreted Acres: 8 acres  
 IRIN: Tina Rotenbury

- Isolated Heat Sources
- Heat Perimeter
- Intense Heat
- Scattered Heat

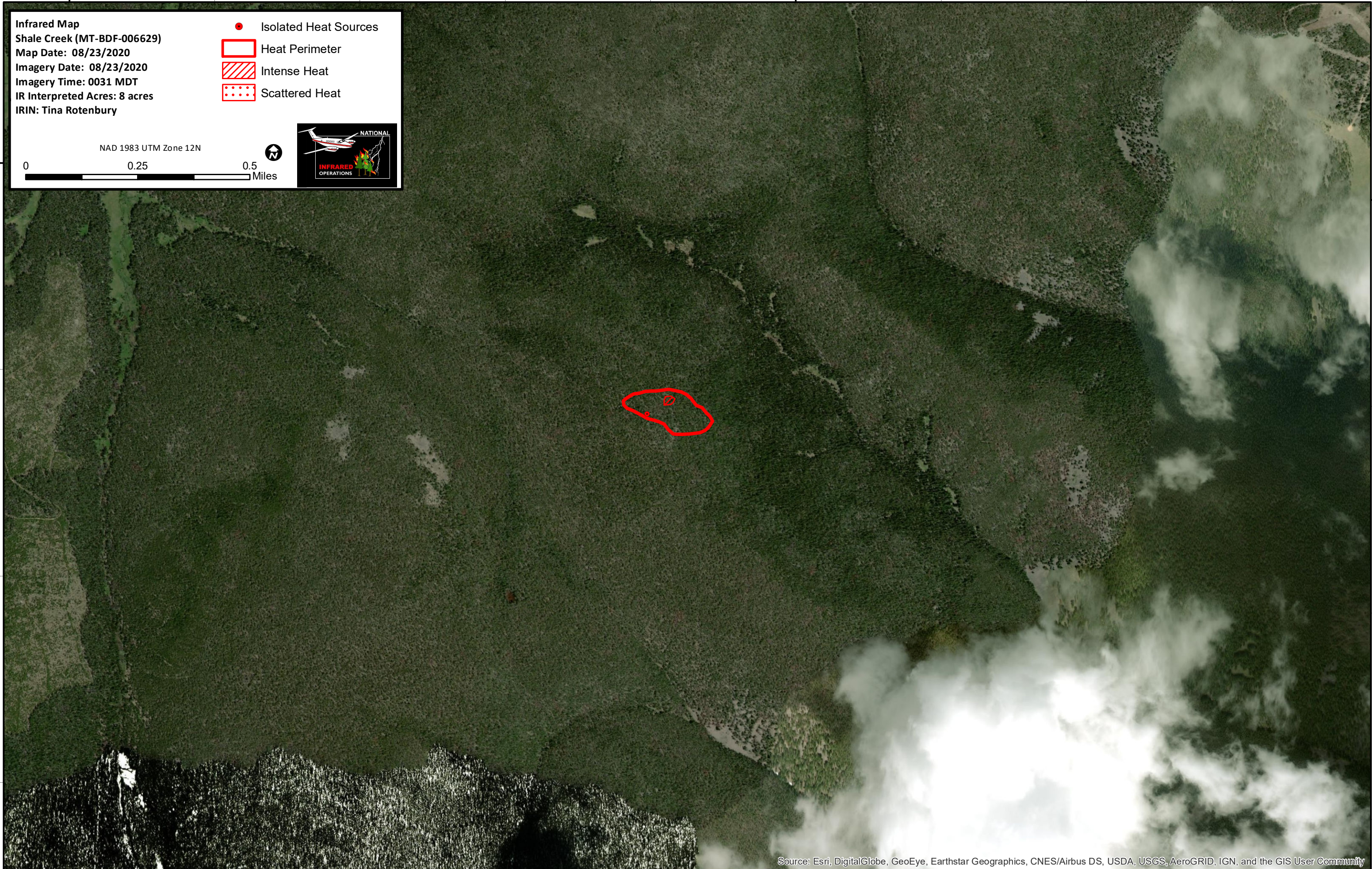
NAD 1983 UTM Zone 12N

0 0.25 0.5 Miles



45°26'0"N

45°26'0"N



Source: Esri, DigitalGlobe, GeoEye, Earthstar Geographics, CNES/Airbus DS, USDA, USGS, AeroGRID, IGN, and the GIS User Community

113°12'0"W

113°10'0"W