

115°16'0"W 115°14'0"W 115°12'0"W 115°10'0"W 115°8'0"W 115°6'0"W 115°4'0"W 115°2'0"W


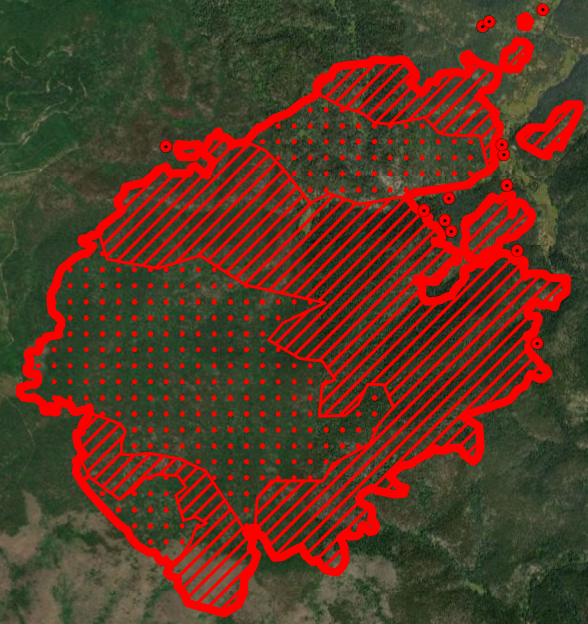
45°48'0"N
45°46'0"N
45°44'0"N
45°42'0"N

Infrared Map
 Shissler (ID-NCF-00472)
 Map Date: 08/22/2020
 Imagery Date: 08/22/2020
 Imagery Time: 0115 MDT
 IR Interpreted Acres: 1,922 acres
 IRIN: Brian Barns

- Isolated Heat Sources
- Heat Perimeter
- Intense Heat
- Scattered Heat

NAD 1983 UTM Zone 11N

0 0.25 0.5 1 1.5 2 Miles

45.74898 N, 115.27071 W

45.72523 N, 115.12864 W

45.6949 N, 115.2329 W

45°46'0"N
45°44'0"N
45°42'0"N

115°16'0"W 115°14'0"W 115°12'0"W 115°10'0"W 115°8'0"W 115°6'0"W 115°4'0"W