


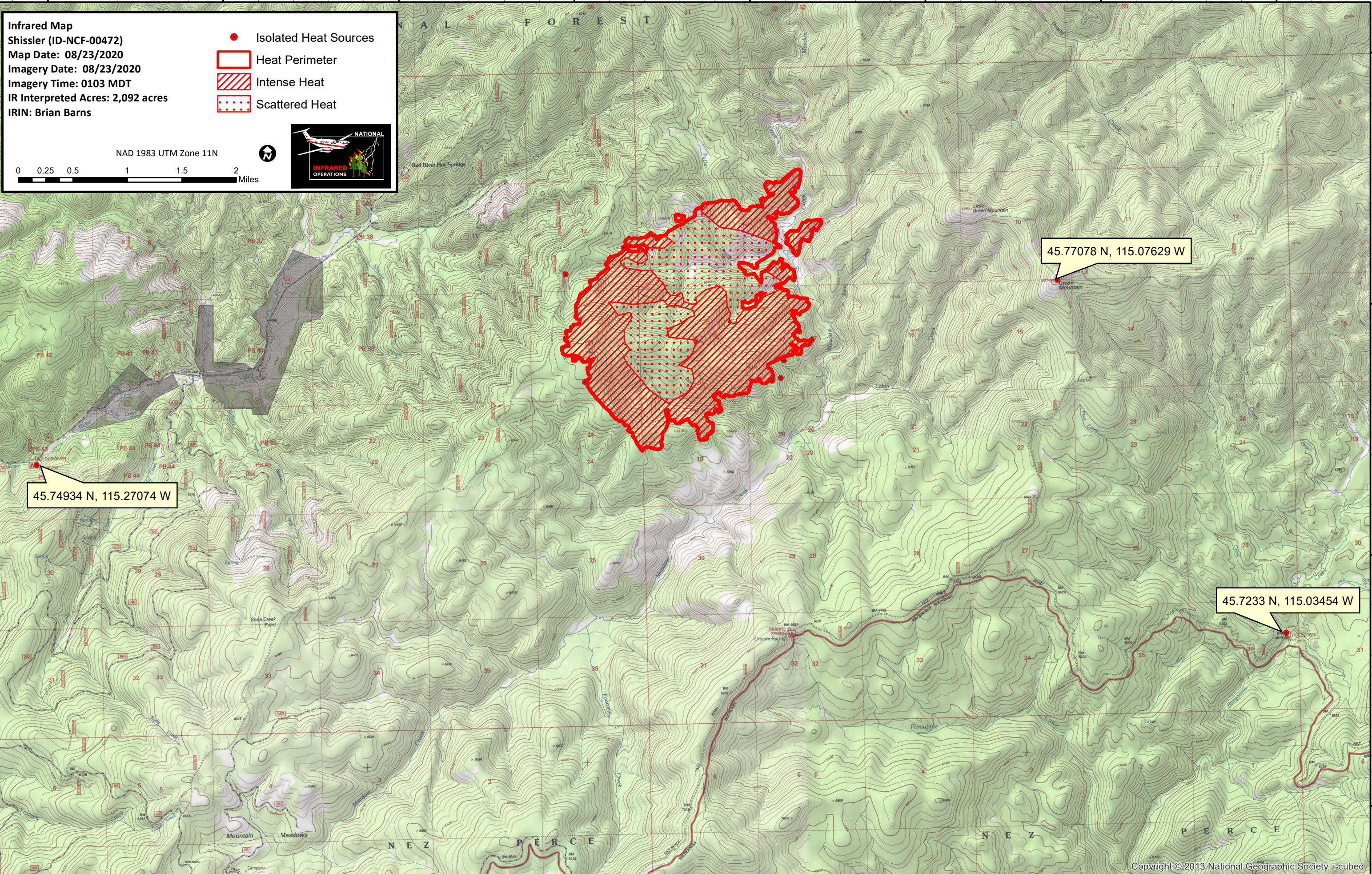
115°16'0"W 115°14'0"W 115°12'0"W 115°10'0"W 115°8'0"W 115°6'0"W 115°4'0"W 115°2'0"W

Infrared Map
 Shissler (ID-NCF-00472)
 Map Date: 08/23/2020
 Imagery Date: 08/23/2020
 Imagery Time: 0103 MDT
 IR Interpreted Acres: 2,092 acres
 IRIN: Brian Barns

- Isolated Heat Sources
- Heat Perimeter
- Intense Heat
- Scattered Heat

NAD 1983 UTM Zone 11N

0 0.25 0.5 1 1.5 2 Miles

45.77078 N, 115.07629 W

45.74934 N, 115.27074 W

45.7233 N, 115.03454 W

115°16'0"W 115°14'0"W 115°12'0"W 115°10'0"W 115°8'0"W 115°6'0"W 115°4'0"W 115°2'0"W