

115°16'0"W 115°14'0"W 115°12'0"W 115°10'0"W 115°8'0"W 115°6'0"W

Infrared Map
Shissler (ID-NCF-00472)
Map Date: 08/24/2020
Imagery Date: 08/24/2020
Imagery Time: 0045 MDT
IR Interpreted Acres: 2,456 acres
IRIN: Brian Barns

- Isolated Heat Sources
- Heat Perimeter
- Intense Heat
- Scattered Heat

NAD 1983 UTM Zone 11N
0 0.25 0.5 1 1.5 Miles



45°48'0"N

45°48'0"N

45°46'0"N

45°46'0"N

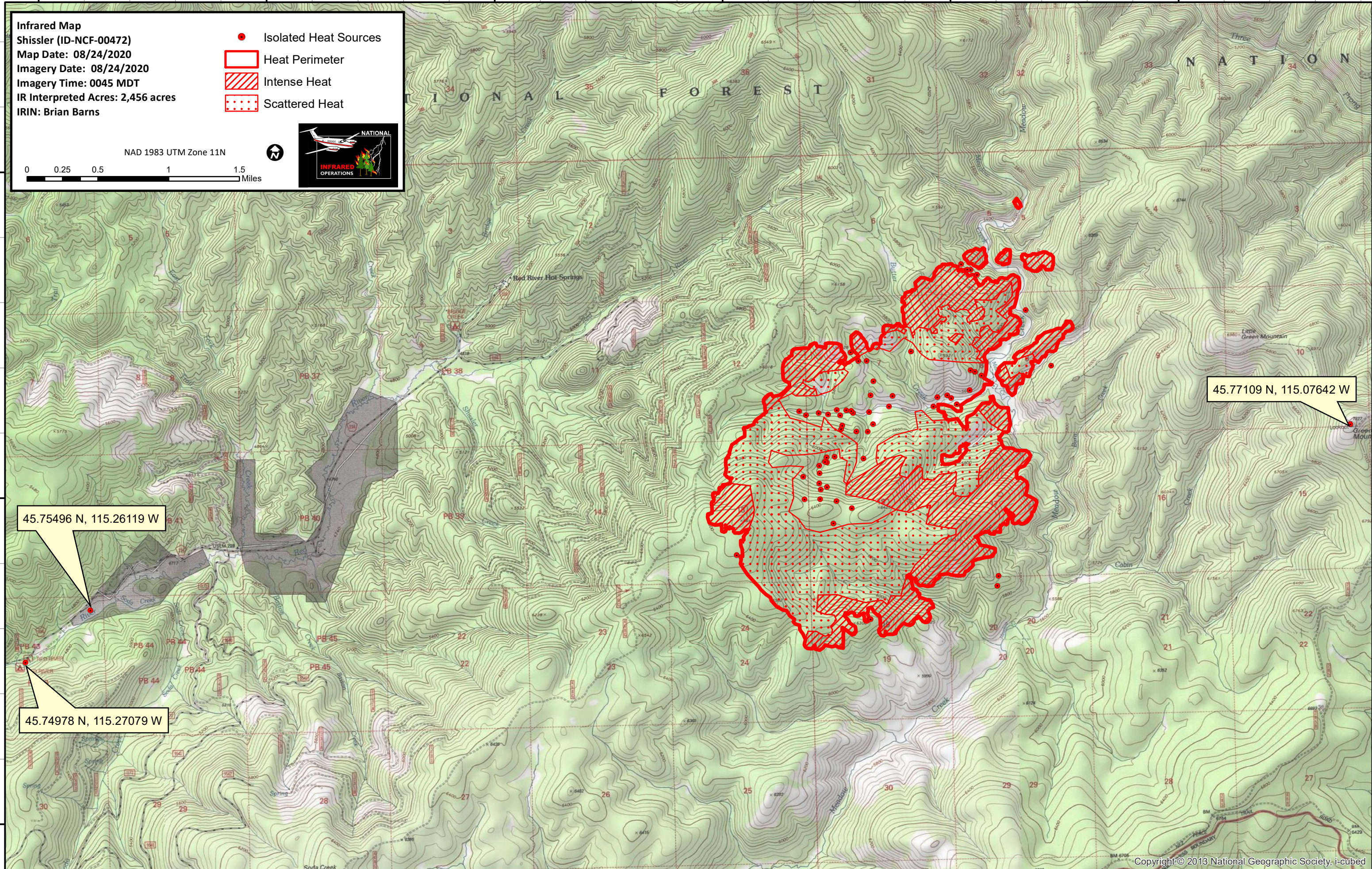
45°44'0"N

45°44'0"N

45.75496 N, 115.26119 W

45.74978 N, 115.27079 W

45.77109 N, 115.07642 W



115°16'0"W 115°14'0"W 115°12'0"W 115°10'0"W 115°8'0"W 115°6'0"W