

# Snider Fire

MT-LG29-000346

Financial Code

840005

# Rice Fire

MT-LG29-000349

Financial Code

840007



## Incident Action Plan

Sunday September 6<sup>th</sup>, 2020  
Day Operational Period 0630 – 2130

IAP



Maps



## INCIDENT OBJECTIVES (ICS 202)

<b>1. Incident Name:</b>	<b>2. Operational Period:</b> DAY	
<b>Snider &amp; Rice Fires</b>	Date/Time From: <b>9/6/2020 0630</b>	Date/Time To: <b>9/6/2020 2130</b>

**Incident Objectives**

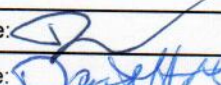
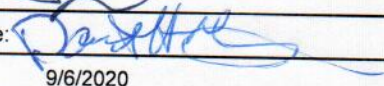
1. Protect human life. Firefighter, aviation, and public safety are the utmost importance and will be provided for by utilizing LCES, the ten standard firefighting orders and eighteen watch out situations.
2. Protect infrastructure and structures when can be done safely, following the guidance in objective #1.
3. Maintain good working relationships with landowners, agency personnel, local governments, and local communities.
4. Keep landowners informed of operational activities.
5. Maintain operational readiness and be flexible in order to assist in local Initial Attack when called upon.

**3. Safety Plan:**

See safety message.

**4. Incident Action Plan** (the items checked below are included in this Incident Action Plan):

- |   |  |
|---|--|
| <ul style="list-style-type: none"> <li>X ICS 202</li> <li>X ICS 203</li> <li>X ICS 204</li> <li>X ICS 205</li> <li>x ICS 206</li> </ul> | <ul style="list-style-type: none"> <li>X ICS 220</li> <li>X Map/Chart</li> <li>X Weather Forecast</li> </ul> |
|---|--|
- 
- |  |                                  |
|--|----------------------------------|
| <ul style="list-style-type: none"> <li>x COVID Safety</li> <li>x Safety Message</li> <li>x Fire Behavior Forecast</li> <li>x Line Supply Order Form</li> </ul> | <p><b>Other Attachments:</b></p> |
|--|----------------------------------|

<b>5. Prepared by:</b> Dustin Tetrault	Position/Title: PSC3	Signature: 
<b>6. Approved by Incident Commander:</b>	Name: <b>Dave Hamilton</b>	Signature: 
ICS 202	IAP Page	Date: 9/6/2020

<b>1. Incident Name: Snider &amp; Rice Fires</b>	
2. Dated 09/05/2020	Time 1800
4. Operational Period <b>09/06/2020 0630 – 2130</b>	
Position	Name
<b>5. Incident Commander and Staff</b>	
Incident Commander	Dave Hamilton
Incident Commander (T)	Donnie Jones (T)
Safety Officer	Tim Crosmer
Information Officer	Crystal Beckman
Liaison Officer	Joey Zahara
<b>6. Agency Representatives</b>	
DNRC ELO Line Officer	Chris Pileski
Power River County	Lee Randall
Rosebud County	Doug Martens
Custer County	Kevin Krausz
BLM Eastern Mt Dakotas	Eric Lepisto
USFS Custer Gallatin	Ron Hecker
<b>7. Planning Section</b>	
Chief	Dustin Tetrault
Resources Unit	Nick Aschenwald
Situation Unit	Kurt Hansen, Bill Burdick(T)
Status Check-In	Glenda Tonne
GIS Technician	NR Remote SIT
Resource Advisors	Donovan Birch, BLM
	Dave Green, FS
	Ray Disilva, FS
Covid EMT	Cory Phillips
<b>8. Logistics Section</b>	
Chief	Roger Zeisak
Ground Support Unit	Rich Rose, Pierce Matyas (T)
Communications Unit	Mark Brown
Medical Unit	
Food Unit	Jeff Brandt
Security Unit	
Facilities Unit	Michael Daily
Supply Unit	Monty McNally
Camp Crew	BLM Camp Crew

<b>9. Operations Section</b>		
Line Ops/Branch Director: Chuck Quinnell and George Luther		Planning Ops: Cory Calnan, Pat Hultin
<b>Branch 1 Snider Fire</b>		
	Division A	AJ Angelo
	Division C	Josh Price
	Division T	Johanson
<b>Branch 2 Rice Fire</b>		
	Division B	Andy Rishavy / Joe Nevin (t)
	Division I	Willy Wegner
	Division G	Sheldon Bolinger
<b>Air Operations</b>		
Air Operations Branch Director		Chris Dargan
Air Attack Supervisor		
Air Support Supervisor		
Helicopter Coordinator		
Helibase Manager		Hall
<b>10. Finance Section</b>		
Chief		Becky Shepard
Time Unit		Megan Ladders (T)
Procurement Unit		Natasha Bucklin
Compensation/Claims Unit		
Cost Unit		
Incident Contract Project Inspector		
Prepared by: Nick Aschenwald		

<b>DIVISION ASSIGNMENT LIST</b>			1. Branch <b>Branch 1 Snider Fire</b>		2. Division/Group <b>DIV ALPHA</b>		
3. Incident Name <b>Snider Fire</b>				4. Operational Period <b>Date: September 6<sup>th</sup>, 2020</b> <b>Time: 0630-2130</b>			
<b>5. OPERATIONS PERSONNEL</b>							
Operations Chief		<b>Cory Calnan/Pat Hultin</b>		Division/Group Supervisor		<b>AJ Angelo</b>	
Branch Director		<b>George Luther</b>		Safety Officer		<b>Raisler/Friede</b>	
<b>6. RESOURCES ASSIGNED THIS PERIOD</b>							
RESOURCE NAME/DESIGNATOR	LEADER	NUMBER OF PEOPLE	EMT	DROP OFF		E-	
				TIME	DEPARTURE POINT DESTINATION	TIME	PICKUP POINT DESTINATION
<b>DIVS</b>	<b>AJ Angelo</b>	<b>1</b>			<b>ICP 0630</b>	<b>ICP2130</b>	
<b>TFLD</b>	<b>Zeb Wright</b>	<b>1</b>					
<b>E-18 Ekalaka</b>		<b>2</b>					
<b>E-22 Garfield County</b>		<b>3</b>					
<b>7. CONTROL OPERATIONS</b>							
<ul style="list-style-type: none"> <li>- Continue to secure uncontrolled Fireline.</li> <li>- Begin mop-up operations. Mop up and secure 2 chains from fire edge.</li> <li>- Remain ready for additional initial attack.</li> </ul>							
<b>8. SPECIAL INSTRUCTIONS</b>							
<b>9. DIVISION/GROUP COMMUNICATION SUMMARY</b>							
Function	Frequency	Tone	Channel	Function	Frequency	System	Channel
Branch1DivA			MAROON	Branch2DivI			RED
Branch1DivC			MAROON	Branch2DivG			RED
Branch1DivT			BLM SOA 1				
Branch2DivB			RED				
A/G	151.2200		YELLOW				
Prepared By (Resource Unit Leader)			Approved By (Planning Section Chief)			Date	
<b>Nick Aschenwald</b>			<b>Dustin Tetrault</b>			<b>September 5<sup>th</sup>, 2020</b>	

<b>DIVISION ASSIGNMENT LIST</b>		1. Branch <b>Branch 1 Snider Fire</b>		2. Division/Group <b>DIV CHARLIE</b>			
3. Incident Name <b>Snider Fire</b>				4. Operational Period <b>Date: September 6<sup>th</sup>, 2020</b> <b>Time: 0630-2130</b>			
<b>5. OPERATIONS PERSONNEL</b>							
Operations Chief		<b>Cory Calnan/Pat Hultin</b>		Division/Group Supervisor		<b>Josh Price</b>	
Branch Director		<b>George Luther</b>		Safety Officer		<b>Raisler/Friede</b>	
<b>6. RESOURCES ASSIGNED THIS PERIOD</b>							
RESOURCE NAME/DESIGNATOR	LEADER	NUMBER OF PEOPLE	EMT	DROP OFF		E-	
				TIME	DEPARTURE POINT DESTINATION	TIME	PICKUP POINT DESTINATION
<b>DIVS</b>	<b>Josh Price</b>	<b>1</b>			<b>ICP 0630</b>	<b>ICP2130</b>	
<b>E-2 Wildfire Resources</b>		<b>3</b>					
<b>E-3 Flat Rock Co.</b>		<b>3</b>					
<b>E-5 Pemberto Leona 1</b>		<b>3</b>					
<b>E-6 Pemberto Leona 2</b>		<b>3</b>					
<b>E-10 Griz One FF</b>		<b>3</b>					
<b>E-36 Otter Creek Excavator</b>		<b>1</b>					
<b>7. CONTROL OPERATIONS</b>							
<ul style="list-style-type: none"> <li>- Continue to secure uncontrolled Fireline. Monitor fire in river bottom and around structures.</li> <li>- Begin mop-up operations. Mop up and secure 2 chains from fire edge.</li> <li>- Remain ready for additional initial attack.</li> </ul>							
<b>8. SPECIAL INSTRUCTIONS</b>							
<b>9. DIVISION/GROUP COMMUNICATION SUMMARY</b>							
Function	Frequency	Tone	Channel	Function	Frequency	System	Channel
Branch1DivA			MAROON	Branch2DivI			RED
Branch1DivC			MAROON	Branch2DivG			RED
Branch1DivT			BLM SOA 1				
Branch2DivB			RED				
A/G	151.2200		YELLOW				
Prepared By (Resource Unit Leader)			Approved By (Planning Section Chief)			Date	
<b>Nick Aschenwald</b>			<b>Dustin Tetrault</b>			<b>September 5<sup>th</sup>, 2020</b>	

<b>DIVISION ASSIGNMENT LIST</b>		1. Branch <b>Branch 1 Snider Fire</b>	2. Division/Group <b>DIV TANGO</b>				
3. Incident Name <b>Snider Fire</b>			4. Operational Period <b>Date: September 6<sup>th</sup>, 2020</b> <b>Time: 0630-2130</b>				
<b>5. OPERATIONS PERSONNEL</b>							
Operations Chief	<b>Cory Calnan/Pat Hultin</b>		Division/Group Supervisor	<b>Johanson</b>			
Branch Director	<b>George Luther</b>		Safety Officer	<b>Raisler/Friede</b>			
<b>6. RESOURCES ASSIGNED THIS PERIOD</b>							
RESOURCE NAME/DESIGNATOR	LEADER	NUMBER OF PEOPLE	EMT	DROP OFF		E-	
				TIME	DEPARTURE POINT DESTINATION	TIME PICKUP POINT DESTINATION	
<b>DIVS</b>	<b>Johanson</b>	<b>1</b>			<b>ICP 0630</b>	<b>ICP2130</b>	
<b>C-4 Lewis &amp; Clark</b>		<b>20</b>					
<b>DIVS(T)</b>	<b>Phillps</b>	<b>1</b>					
<b>TFLD</b>	<b>Brita West</b>	<b>1</b>					
<b>E-7 AEGIS</b>		<b>3</b>					
<b>E-17 MCD Miles City</b>		<b>3</b>					
<b>E-8 JR Wildfire</b>		<b>3</b>					
<b>E-17 BLM 2410</b>		<b>4</b>					
<b>E-12 Outback FF</b>		<b>3</b>					
<b>E-24 Kolka Dozer</b>		<b>1</b>					
<b>E-25 Cady Creek Dozer</b>		<b>1</b>					
<b>E-13 Tender Camp Crook VFD</b>		<b>1</b>					
<b>7. CONTROL OPERATIONS</b>							
<ul style="list-style-type: none"> <li>- Continue to secure uncontrolled Fireline.</li> <li>- Begin mop-up operations. Mop up and secure 2 chains from fire edge.</li> <li>- Remain ready for additional initial attack.</li> </ul>							
<b>8. SPECIAL INSTRUCTIONS</b>							
<b>9. DIVISION/GROUP COMMUNICATION SUMMARY</b>							
Function	Frequency	Tone	Channel	Function	Frequency	System	Channel
Branch1DivA			MAROON	Branch2DivI			RED
Branch1DivC			MAROON	Branch2DivG			RED
Branch1DivT			BLM SOA 1				
Branch2DivB			RED				
A/G	151.2200		YELLOW				
Prepared By (Resource Unit Leader) <b>Nick Aschenwald</b>			Approved By (Planning Section Chief) <b>Dustin Tetrault</b>			Date <b>September 5<sup>th</sup>, 2020</b>	

<b>DIVISION ASSIGNMENT LIST</b>		1. Branch <b>Branch 2 Rice Fire</b>	2. Division/Group <b>DIV BRAVO</b>				
3. Incident Name <b>Rice Fire</b>			4. Operational Period <b>Date: September 6<sup>th</sup>, 2020</b> <b>Time: 0630-2130</b>				
<b>5. OPERATIONS PERSONNEL</b>							
Operations Chief		<b>Cory Calnan/Pat Hultin</b>		Division/Group Supervisor		<b>Andy Rishavy / Joe Nevin (t)</b>	
Branch Director		<b>Chuck Quinnell</b>		Safety Officer		<b>Williams/Dickinson</b>	
<b>6. RESOURCES ASSIGNED THIS PERIOD</b>							
RESOURCE NAME/DESIGNATOR	LEADER	NUMBER OF PEOPLE	EMT	DROP OFF		E-	
				TIME	DEPARTURE POINT DESTINATION	TIME	PICKUP POINT DESTINATION
<b>DIVS</b>	<b>Andy Rishavy</b>	<b>1</b>					
<b>DIVS (t)</b>	<b>Joe Nevin</b>	<b>1</b>			<b>ICP 0630</b>	<b>ICP2130</b>	
<b>C-2 Grayback</b>		<b>20</b>					
<b>C-6 T2 Patrick Environ.</b>		<b>20</b>					
<b>Jumper Mod</b>		<b>7</b>					
<b>E-2602 BLM IA</b>		<b>3</b>					
<b>E-1 Heck of a Fire Crew</b>		<b>3</b>					
<b>E-4 Methow River</b>		<b>3</b>					
<b>E-9 Chloeta Fire</b>		<b>3</b>					
<b>E-28 Tender Ficek</b>		<b>1</b>					
<b>E-7 Dozer Hagedorn</b>		<b>2</b>					
<b>E-11 Kanab Brush 21</b>		<b>2</b>					
<b>E-30 Inland forest</b>		<b>3</b>					
<b>O-11 EMTF</b>	<b>Webster</b>	<b>1</b>					
<b>7. CONTROL OPERATIONS</b>							
<ul style="list-style-type: none"> <li>- Continue to secure uncontrolled Fireline.</li> <li>- Begin mop-up operations. Mop up and secure 2 chains from fire edge.</li> <li>- Remain ready for additional initial attack.</li> </ul>							
<b>8. SPECIAL INSTRUCTIONS</b>							
<b>9. DIVISION/GROUP COMMUNICATION SUMMARY</b>							
Function	Frequency	Tone	Channel	Function	Frequency	System	Channel
Branch1DivA			MAROON	Branch2DivI			RED
Branch1DivC			MAROON	Branch2DivG			RED
Branch1DivT			BLM SOA 1				
Branch2DivB			RED				
A/G	151.2200		YELLOW				
Prepared By (Resource Unit Leader)			Approved By (Planning Section Chief)			Date	
<b>Nick Aschenwald</b>			<b>Dustin Tetrault</b>			<b>September 5, 2020</b>	

<b>DIVISION ASSIGNMENT LIST</b>		1. Branch <b>Branch 2 Rice Fire</b>	2. Division/Group <b>DIV Golf</b>				
3. Incident Name <b>Rice Fire</b>			4. Operational Period <b>Date: September 6<sup>th</sup>, 2020</b> <b>Time: 0630-2130</b>				
<b>5. OPERATIONS PERSONNEL</b>							
Operations Chief		<b>Cory Calnan/Pat Hultin</b>		Division/Group Supervisor		<b>Sheldon Bolinger</b>	
Branch Director		<b>Chuck Quinnell</b>		Safety Officer		<b>Williams/Dickinson</b>	
<b>6. RESOURCES ASSIGNED THIS PERIOD</b>							
RESOURCE NAME/DESIGNATOR	LEADER	NUMBER OF PEOPLE	EMT	DROP OFF		E-	
				TIME	DEPARTURE POINT DESTINATION	TIME	PICKUP POINT DESTINATION
<b>DIVS</b>	<b>Sheldon Bolinger</b>	<b>1</b>			<b>ICP 0630</b>	<b>ICP2130</b>	
<b>C-1 Tri-Cities</b>		<b>20</b>					
<b>E-21 Custer County</b>		<b>3</b>					
<b>E-32 KNF 472</b>		<b>4</b>					
<b>E-31 KNF 655</b>		<b>5</b>					
<b>E-20 Carter County</b>		<b>3</b>					
<b>E-23 Savage Fire</b>		<b>3</b>					
<b>E-33 KNF 611</b>		<b>3</b>					
<b>E-27 Tender Browning</b>		<b>1</b>					
<b>E-26 Dozer Browning</b>		<b>2</b>					
<b>IDL Task Force (IA)</b>	<b>TFLD Julia Sullens</b>	<b>20</b>					
<b>7. CONTROL OPERATIONS</b>							
<ul style="list-style-type: none"> <li>- Continue to secure uncontrolled Fireline.</li> <li>- Begin mop-up operations. Mop up and secure 2 chains from fire edge.</li> <li>- Remain ready for additional initial attack.</li> </ul>							
<b>8. SPECIAL INSTRUCTIONS</b>							
<b>9. DIVISION/GROUP COMMUNICATION SUMMARY</b>							
Function	Frequency	Tone	Channel	Function	Frequency	System	Channel
Branch1DivA			MAROON	Branch2DivI			RED
Branch1DivC			MAROON	Branch2DivG			RED
Branch1DivT			BLM SOA 1				
Branch2DivB			RED				
A/G	151.2200		YELLOW				
Prepared By (Resource Unit Leader)			Approved By (Planning Section Chief)			Date	
<b>Nick Aschenwald</b>			<b>Dustin Tetrault</b>			<b>September 5, 2020</b>	



<b>DIVISION ASSIGNMENT LIST</b>	1. Branch <b>Branch 2 Rice Fire</b>	2. Division/Group <b>DIV India</b>
	3. Incident Name <b>Rice Fire</b>	

4. Operational Period <b>Date: September 6<sup>th</sup>, 2020</b> <b>Time: 0630-2130</b>	
--	--

**5. OPERATIONS PERSONNEL**

Operations Chief	<b>Cory Calnan/Pat Hultin</b>	Division/Group Supervisor	<b>Willy Wegner</b>
Branch Director	<b>Chuck Quinnell</b>	Safety Officer	<b>Williams/Dickinson</b>

**6. RESOURCES ASSIGNED THIS PERIOD**

RESOURCE NAME/DESIGNATOR	LEADER	NUMBER OF PEOPLE	EMT	DROP OFF		E-	
				TIME	DEPARTURE POINT DESTINATION	TIME	PICKUP POINT DESTINATION
<b>DIVS</b>	<b>Willy Wegner</b>	<b>1</b>			<b>ICP 0630</b>		<b>ICP2130</b>
<b>C-3 T2IA Miller For</b>		<b>20</b>					
<b>BLM Engine 2604</b>		<b>4</b>					
<b>E-34 FS Eng361</b>		<b>3</b>					
<b>E-5 Otter Creek Dozer</b>		<b>2</b>					

**7. CONTROL OPERATIONS**

- Continue to secure uncontrolled Fireline.
- Begin mop-up operations. Mop up and secure 2 chains from fire edge.
- Remain ready for additional initial attack.

**8. SPECIAL INSTRUCTIONS**

--

**9. DIVISION/GROUP COMMUNICATION SUMMARY**

Function	Frequency	Tone	Channel	Function	Frequency	System	Channel
Branch1DivA			MAROON	Branch2DivI			RED
Branch1DivC			MAROON	Branch2DivG			RED
Branch1DivT			BLM SOA 1				
Branch2DivB			RED				
A/G	151.2200		YELLOW				

Prepared By (Resource Unit Leader) <b>Nick Aschenwald</b>	Approved By (Planning Section Chief) <b>Dustin Tetrault</b>	Date <b>September 5, 2020</b>
--	--	----------------------------------

# AIR OPERATIONS SUMMARY (ICS 220)

<b>1. Incident Name:</b> Snider/Rice Fires	<b>2. Operational Period:</b> Date From: 09/06/20 Date To: 09/06/20 Time From: 0630 Time To: 2130	<b>3. Sunrise:</b> 0559	<b>Sunset:</b> 2005			
<b>4. Remarks (safety notes, hazards, air operations special equipment, etc.):</b> Air Attack request through Miles City Dispatch		<b>5. Ready Alert Aircraft:</b> Medivac: Help Flight New Incident:				
Helibase Location: 45.50.41 106.13.41		<b>6. Temporary Flight Restriction Number:</b> Altitude: Snider/Rice TFR In Place Center Point:				
<b>7. Personnel:</b>		<b>8. Frequencies:</b>				
	Name:	Snider	Rice			
	Phone Number:	118.00	"			
Air Operations Branch Director	Chris Dargan	133.5750	"			
Air Support Group Supervisor	Orange	91				
Air Tactical Group Supervisor	Command	MA RPT	MA RPT			
Helicopter Coordinator	Deck Coordinator					
Helibase Manager	Joe Hall		Other Fixed-Wing Aircraft:			
<b>10. Helicopters (use additional sheets as necessary):</b>						
FAA N#	Category/Kind/Type	Make/Model	Base	Available	Start	Remarks
87M	DNRC / T2		Snider Helibase			
ONW	Blackhawk / T1		Snider Helibase			
OCH	Chinook / T1		Snider Helibase			
<b>11. Prepared by: Name:</b> Chris Dargan <b>Position/Title:</b> AOB <b>Signature:</b> _____						
<b>ICS 220, Page 1</b>						

# INCIDENT RADIO COMMUNICATIONS PLAN

Ch #		Function	Channel Name	Incident Name		Date/Time Prepared		Operational Period Date/Time		Remarks
				Assignment	RX Freq N or W	RX Tone/NAC	TX Freq N or W	Tx Tone/NAC	Mode A, D or M	
				Snider / Rice Fire		9/4/2020 1630		9/5/2020 0700 - 2400		
1	Command	M/A RPT	Command	153.8300 N		159.3450 N	141.3	A	ICP / Rice Fire / Helibase	
2	Command 2	BLM S RPT	Command 2	171.5375 N		164.0875 N	167.9	A	Home Creek (BLM) Repeater	
3	Tactical	BLM N DIR	Unassigned	169.6250 N		169.6250 N		A		
4	Command 3	USFS RPT	Command 3	170.4625 N		164.9125 N	100.0	A	Liscom (USFS)	
5	Tactical	USFS DIR	USFS DIR	169.1750 N		169.1750 N		A	USFS Direct	
6	Air 2 Ground	ORANGE	A/G SNIDER	151.4000 N		151.4000 N		A	Snider Air 2 Ground	
7	Air 2 Ground	A/G 91	A/G RICE	166.6750 N		166.6750 N		A	Rice Air 2 Ground	
8	Tactical	RED	All DIV's RICE	154.0700 N		154.0700 N		A	TAC all DIV's Rice	
9	Tactical	MAROON	DIV A and C	154.2800 N		154.2800 N		A	TAC DIV's A and C	
10	Tactical	YELLOW	Unassigned	151.2200 N		151.2200 N		A		
11	Tactical	BLM SOA1	DIV T	168.2250 N		168.2250 N		A	TAC DIV Tango	
12	Tactical	BLM SOA2	BLM SOA2	167.1750 N		167.1750 N		A		
13	Tactical	SCARLET	Unassigned	154.2650 N		154.2650 N		A		
14	Tactical	TAN	Medical A/G	155.3400 N		155.3400 N		A	Medical Air 2 Ground	
15	Repeater	DNRC RPT	Command	151.5375 N		151.4750 N	192.8	A	DNRC Home Creek RPT	
16	Tactical	DNRC DIR	Unassigned	151.1750 N		151.1750 N		A	DNRC Direct	
17										
18										

Prepared By (Communications Unit)   
 Mark Brown COML (T-A)  
 Incident Location  
 Toungue River Road 45.811136, -106.254524, Rosebud County, Montana

The convention calls for frequency lists to show four digits after the decimal place, followed by either an "N" or a "W", depending on whether the frequency is narrow or wide band. Mode refers to either "A" or "D" indicating analog or digital (e.g. Project 25) or "M" indicating mixed mode. All channels are shown as if programmed in a control station, mobile or portable radio. Repeater and base stations must be programmed with the Rx and Tx reversed.

# MEDICAL PLAN (ICS 206 WF)

Controlled Unclassified Information//Basic

1. Incident/Project Name		2. Operational Period						
Rice and Snider Fires		0630 - 2130						
3. Ambulance Services								
Name	Complete Address	Phone & EMS Frequency	Advanced Life Support (ALS) Yes      No					
Rosebud County EMS	165 Front St. Forsyth, MT 59327	(406)346-7968	<input checked="" type="checkbox"/>	<input type="checkbox"/>				
Ashland Quick Response	501 Main St. Ashland, MT 59003	(406)784-2399	<input type="checkbox"/>	<input checked="" type="checkbox"/>				
4. Air Ambulance Services								
Name	Phone	Type of Aircraft & Capability						
Help Flight; St. Vincent Healthcare	1(800)538-4357	Air Ambulance; Flight Medic & Flight Nurse; CCT						
5. Hospitals								
Name Complete Address	GPS Datum – WGS 84 Coordinate Standard Degrees Decimal Minutes DD° MM.MMM' N - Lat DD° MM.MMM' W - Long		Travel Time Air      Gnd		Phone	Helipad Yes      No		Level of Care Facility
	Lat:	46° 16.308' N	1 hr	(406)346-2161	<input type="checkbox"/>	<input type="checkbox"/>	Critical Access Hospital	
Long:	106° 40.242' W							
VHF:								
St. Vincent Healthcare	Lat: 45° 47.574' N Long: 108° 31.122' W VHF:	1 hr 2.5hrs	(406)657-7000	<input checked="" type="checkbox"/>	<input type="checkbox"/>	Level II Trauma Center		
Billings Clinic Emergency	Lat: 45° 47.364' N Long: 108° 30.780' W VHF:	2.5hrs	(406)238-2500	<input checked="" type="checkbox"/>	<input type="checkbox"/>	Level II Trauma Center		
	Lat: Long: VHF:			<input type="checkbox"/>	<input type="checkbox"/>			
6. Division   Branch   Group		Area Location Capability						
ICP	EMS Responders & Capability:		FF/PM Phillips; NREMT-P					
	Equipment Available on Scene:		AED; Trauma Kit; Airway Bag; ALS Medications					
	Medical Emergency Channel:		IWI on Command; Medical Air to ground on Tan					
	ETA for Ambulance to Scene:							
	Air:		1 hr					
	Ground:		30 min					
	Approved Helispot:							
	Lat:		45° 48.637'					
Long:		106° 15.361'						
	EMS Responders & Capability:							
	Equipment Available on Scene:		AED; Trauma Kit; Airway Bag; ALS Medications					
	Medical Emergency Channel:							
	ETA for Ambulance to Scene:							
	Air:							
	Ground:							
	Approved Helispot:							
	Lat:							
Long:								

## MEDICAL PLAN (ICS 206 WF)

Controlled Unclassified Information//Basic

7. Name & Location	Remote Camp Location(s)			
	Point of Contact:			
	EMS Responders & Capability:			
	Equipment Available on Scene:			
	Medical Emergency Channel:			
	ETA for Ambulance to Scene:			
	Air:			
	Ground:			
	Approved Helispot:			
	Lat:			
	Long:			
		Point of Contact:		
		EMS Responders & Capability:		
		Equipment Available on Scene:		
		Medical Emergency Channel:		
ETA for Ambulance to Scene:				
Air:				
Ground:				
Approved Helispot:				
Lat:				
Long:				
8. Prepared By (Medical Unit Leader)	9. Date/Time	10. Reviewed By (Safety Officer)	11. Date/Time	
Cory Phillips, Fire Line Medic	9/4/20 @0800			

# MEDICAL PLAN (ICS 206 WF)

Controlled Unclassified Information//Basic

## Medical Incident Report

**FOR A NON-EMERGENCY INCIDENT, WORK THROUGH CHAIN OF COMMAND TO REPORT AND TRANSPORT INJURED PERSONNEL AS NECESSARY.**

**FOR A MEDICAL EMERGENCY: IDENTIFY ON SCENE INCIDENT COMMANDER BY NAME AND POSITION AND ANNOUNCE "MEDICAL EMERGENCY" TO INITIATE RESPONSE FROM IMT COMMUNICATIONS/DISPATCH.**

**Use the following items to communicate situation to communications/dispatch.**

**1. CONTACT COMMUNICATIONS / DISPATCH** (Verify correct frequency prior to starting report)

*Ex: "Communications, Div. Alpha. Stand-by for Emergency Traffic."*

**2. INCIDENT STATUS:** Provide incident summary (including number of patients) and command structure.

*Ex: "Communications, I have a Red priority patient, unconscious, struck by a falling tree. Requesting air ambulance to Forest Road 1 at (Lat./Long.) This will be the Trout Meadow Medical, IC is TFLD Jones. EMT Smith is providing medical care."*

Severity of Emergency / Transport Priority	<input type="checkbox"/> <b>RED / PRIORITY 1 Life or limb threatening injury or illness. Evacuation need is IMMEDIATE</b> <i>Ex: Unconscious, difficulty breathing, bleeding severely, 2° - 3° burns more than 4 palm sizes, heat stroke, disoriented.</i> <input type="checkbox"/> <b>YELLOW / PRIORITY 2 Serious Injury or illness. Evacuation may be DELAYED if necessary.</b> <i>Ex: Significant trauma, unable to walk, 2° - 3° burns not more than 1-3 palm sizes.</i> <input type="checkbox"/> <b>GREEN / PRIORITY 3 Minor Injury or illness. Non-Emergency transport</b> <i>Ex: Sprains, strains, minor heat-related illness.</i>	
Nature of Injury or Illness & Mechanism of Injury		Brief Summary of Injury or Illness <i>(Ex: Unconscious, Struck by Falling Tree)</i>
Transport Request		Air Ambulance / Short Haul/Hoist Ground Ambulance / Other
Patient Location		Descriptive Location & Lat. / Long. (WGS84)
Incident Name		Geographic Name + "Medical" <i>(Ex: Trout Meadow Medical)</i>
On-Scene Incident Commander		Name of on-scene IC of Incident within an Incident <i>(Ex: TFLD Jones)</i>
Patient Care		Name of Care Provider <i>(Ex: EMT Smith)</i>

**3. INITIAL PATIENT ASSESSMENT:** Complete this section for each patient as applicable (start with the most severe patient)

Patient Assessment: See IRPG page 106

Treatment:

**4. TRANSPORT PLAN:**

Evacuation Location (if different): (Descriptive Location (drop point, intersection, etc.) or Lat. / Long.) Patient's ETA to Evacuation Location:

Helispot / Extraction Site Size and Hazards:

**5. ADDITIONAL RESOURCES / EQUIPMENT NEEDS:**

*Example: Paramedic/EMT, Crews, Immobilization Devices, AED, Oxygen, Trauma Bag, IV/Fluid(s), Splints, Rope rescue, Wheeled litter, HAZMAT, Extrication*

**6. COMMUNICATIONS: Identify State Air/Ground EMS Frequencies and Hospital Contacts as applicable**

Function	Channel Name/Number	Receive (RX)	Tone/NAC *	Transmit (TX)	Tone/NAC *
COMMAND					
AIR-TO-GRND					
TACTICAL					

**7. CONTINGENCY: Considerations:** If primary options fail, what actions can be implemented in conjunction with primary evacuation method? Be thinking ahead.

Should an IWI occur with a Red or Yellow Pt, Help Flight and Ashland QRU will be immediately activated. Fire line Medic from ICP will respond to the incident location to stabilize.

**8. ADDITIONAL INFORMATION:** Updates/Changes, etc.

**REMEMBER:** Confirm ETA's of resources ordered. Act according to your level of training. Be Alert. Keep Calm. Think Clearly. Act Decisively.

# HEALTH AND SAFETY MESSAGE

**SAFETY** starts with **YOU**

We are **ALL** accountable for **SAFE** behaviors

INCIDENT: Snider & Rice Fires

DATE: 9/6/2020

TIME: Dayshift

**Major Hazards and Risks:**  
**SNAGS, AND ROLLING MATERIAL**  
**STEEP TERRAIN**  
**FATIGUE**  
**DEHYDRATION/HEAT STRESS**  
**BOREDOM**

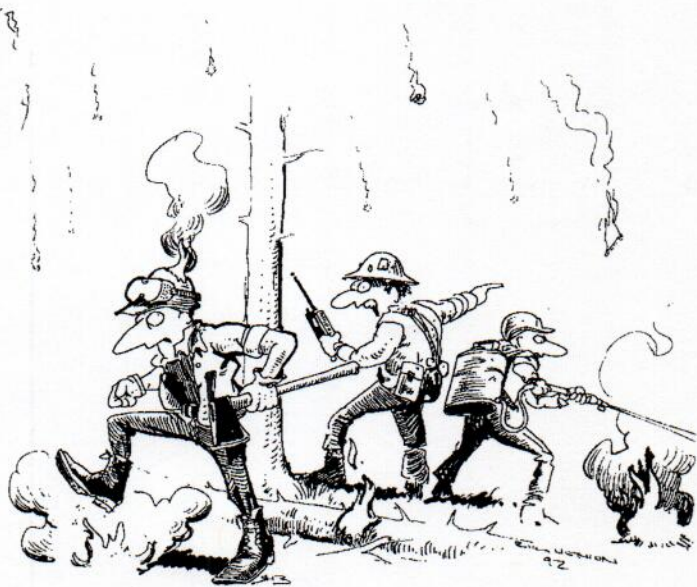
## Fire Order of the Day – Retain control at all times

**Narrative:** Steep rocky terrain and snags continue to be major hazards for all staffed divisions. Watch your footing and take it easy. Pay close attention to your work areas and the places you take breaks.

Supervisors, be sure to monitor your crew's condition. Take frequent breaks and drink plenty of water. Stay focused to the task at hand.

Stay alert when driving to and from the fire line, turn on headlights and slow down. It's hunting season so be on the lookout for hunters on the road.

## Watch Out Situation of the Day



16. GETTING FREQUENT SPOT FIRES  
ACROSS LINE

## SNAG S.O.P.

Identify snags, hazard trees and unstable rocks.  
(Look up, look down, look around).

Identify danger zones and inform others.  
(Flag describe or post lookouts to keep others out).  
Consider wind and weather.

Felling of snags and hazard trees will  
proceed line construction and mop-up.  
Felling by qualified fallers only.

Secure, eliminate or avoid unstable material on slopes.  
Remember, logs can roll, spin, slide, or shift.

Do not work below other firefighters.  
Rocks can roll, slide or bounce.

Establish drop points, rest areas, sleeping  
and parking areas free of snags.

Remain alert to noise or movement – it could signal  
Immediate Danger. Face your danger to decide escape.



## Incident within Incident Emergency Procedures for Operational Resources

1. Report all injuries to direct supervisor
2. **At no time during the incident/fatality or evacuation process will the name of the victim(s), tail number, engine number, or crew name be transmitted.**
3. The closest operationally qualified resource will become IC of the Incident Within an Incident (IWI-IC)  
The IWI-IC will:
  - a. Notify nearest EMT(s) and request medical assistance
  - b. Contact Communications Unit/ICP: It is the responsibility of **ANY RESOURCE** to initiate "Emergency Traffic" on the Command frequency in the event of a serious accident. "Emergency Traffic" should continue to be broadcast until answered by the Communications Unit/ICP
  - c. Ensure an IWI-Incident Commander or an on-scene Point of Contact (POC) is established.
  - d. Complete a rapid patient assessment using the ICS-206 WF (located in IAP) or the 2014 IRPG (page 108-109) to provide further information to Communications or ICP and initial notification to include:
    - i. Your name (not patient) Name and claim the incident
    - ii. Location and GPS coordinates
    - iii. Urgency:
      - **Green:**        **Minor, non-life threatening.**
      - **Yellow:**      **Potentially life threatening needs transport.**
      - **Red:**            **Life threatening**
    - iv. Transport plan
    - v. Additional resource or equipment needs (Logistics)
    - vi. Contingency plans
    - vii. Document, Document, Document (Scribe)
  - e. Continue to oversee medical emergency response
  - f. Confirm transportation plan
  - g. Transfer command to higher level qualification resource as needed. If transfer of command occurs, announce clearly to and all resources over the radio on the "Command and IWI tactical frequency.





# Prevention and Management of COVID-19 During Wildland Fire Operations

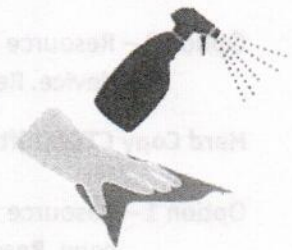
## Practice Social/Physical distancing.

- Much like a fireline, we are building breaks between the workgroups to prevent the spread of illness and ensure firefighters can continue to operate in the event of an exposure.
- A non-traditional fire camp layout will be used with an emphasis on facilitating social distancing. Camp layouts will be designed so crews can maintain separation from each other (module as one) and crews are expected to remain in their assigned locations.
- Respect the space of others. Everyone on this incident, regardless of position has the right to safe work and environment and is empowered to direct a person to back up if they get within six feet.
- Follow posted instructions in fire camp for meals, supply, briefings or other needs. Crews will eat and brief outdoors with designated larger areas than normal to assure proper social distancing
- Practice good respiratory etiquette. Cover coughs and sneezes!
- Wash hands often with soap and water for at least 20 seconds especially after you have been in high-use location, or after blowing your nose, coughing, or sneezing.
- If soap and water are not readily available, use a hand sanitizer that contains at least 60% alcohol. Cover all surfaces of your hands and rub them together until they feel dry. Follow-up washing hands with soap and water when it is again available.
- The use of face coverings is recommended for use in settings where other social distancing is difficult to maintain and where they do not impede or interfere with common firefighting conditions (i.e. heavy physical activity, heat/smoke, maintaining hydration, sunglass fogging/visibility limitations, or communications).



## Clean and Disinfect

- Clean and disinfect shared areas and high touch surfaces in workplaces, vehicles, and equipment at regular intervals. Resources are expected to assist in cleaning and disinfecting efforts to help keep everyone safe. Use appropriate PPE and follow product label instructions when cleaning and disinfecting.
- Do not share dishes, drinking glasses, cups, eating utensils, towels, or bedding without appropriately sanitizing them
- Minimize equipment sharing, disinfect equipment, and wash/sanitize hands before and after use.



## Maintain a Healthy Workforce

- Monitor your own health and maintain awareness of symptoms. Resources are asked to conduct daily symptom screenings, including temperature checks while on incidents. Watch for fever, cough, shortness of breath, or other symptoms of COVID-19.
- Prioritize rest, proper hydration, and nutrition to reduce cumulative fatigue.
- Practice rigorous sanitation and personal hygiene, including covering coughs and sneezes and washing/ sanitizing hands.
- Notify your supervisors and seek immediate medical attention if someone develops emergency warning signs for COVID-19.



FNUS75 KBYZ 052013

FWSBYZ

Spot Forecast for Rice Fire...MT-DNRC  
National Weather Service Billings MT  
213 PM MDT Sat Sep 5 2020

Forecast is based on forecast start time of 1500 MDT on September 05.  
If conditions become unrepresentative...contact the National Weather  
Service.

Please contact our office if you have questions  
or concerns with this forecast.

...RED FLAG WARNING IN EFFECT UNTIL MIDNIGHT MDT SUNDAY NIGHT...

.DISCUSSION...

Hot and dry conditions late today with humidity bottoming out  
around 9 or 10 percent. RH recovery overnight is forecast in the  
34-41 percent range, but may possibly not even quite reach this.  
Look for west/northwest winds overnight. Brisk northerly winds  
will dominate Sunday behind a weak front that slides in from north  
around 6 AM, but RH readings will not be as low with lower 20  
percent range most likely. High temperature in the lower 80s  
expected.

Another frontal passage Sunday evening around 9-10 pm and winds  
turn decidedly east/northeast overnight. Much cooler with higher  
RH on Monday with good chance of wetting rain. Rain ends Monday  
evening, but cooler temperatures remain for Tuesday. BT

.TONIGHT...

Sky/weather.....Mostly cloudy in the evening then clearing.  
LAL.....1...no thunderstorms.  
Min temperature.....60-64.  
Max humidity.....34-41 percent.  
Wind (20 ft).....  
Slope/valley.....West/Northwest or terrain driven winds 6 to 12 mph.  
Ridgetop.....Northwest around 18-23 mph.  
Mixing height.....14000 ft AGL in the evening decreasing to 100 ft  
AGL overnight.  
Transport winds.....West around 16 mph.  
CWR.....0 percent.

.SUNDAY...

Sky/weather.....Sunny.  
LAL.....1...no thunderstorms.  
Max temperature.....80-85.  
Min humidity.....19-24 percent.  
Wind (20 ft).....  
Slope/valley.....North winds 10 to 15 mph. Becoming northeast late.  
Ridgetop.....Northwest around 20 mph.  
Mixing height.....7800 ft AGL.  
Transport winds.....Northwest around 17 mph.  
Haines index.....3 or very low potential for large plume  
dominated fire growth.  
CWR.....0 percent.

.SUNDAY NIGHT...

Sky/weather.....Partly cloudy. A slight chance of showers

late.  
LAL.....MISSING.  
Min temperature.....43-46.  
Max humidity.....83-91 percent.  
Wind (20 ft).....  
Slope/valley.....East winds 7 to 9 mph.  
Ridgetop.....  
Mixing height.....8400 ft AGL in the evening.  
Transport winds.....West around 14 mph.  
CWR.....0 percent.

.LABOR DAY...

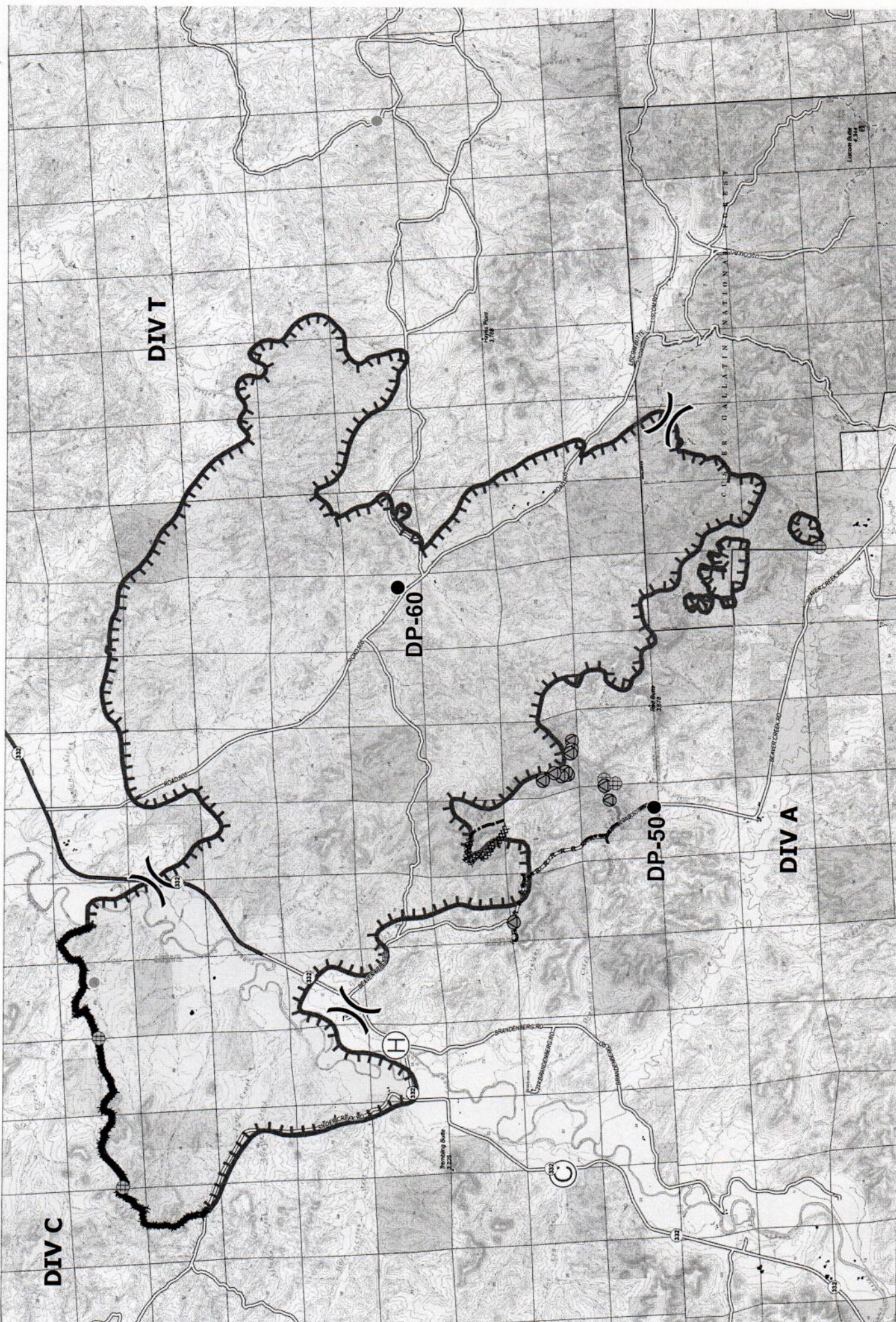
Sky/weather.....Partly sunny with rain showers developing in the morning, then cloudy with rain showers in the afternoon.

LAL.....1 No thunderstorms.  
Max temperature.....44-49.  
Min humidity.....64-70 percent.  
Wind (20 ft).....  
Slope/valley.....Northeast winds 8 to 13 mph.  
Ridgetop.....  
Mixing height.....1200 ft AGL.  
Transport winds.....  
Haines index.....2 or no potential for large plume dominated fire growth.  
CWR.....65 percent.

\$\$

Forecaster...Tesar  
Requested by...Bill Burdick  
Type of request...WILDFIRE  
.TAG 2012185.0/BYZ  
.DELDT 09/05/20  
.FormatterVersion 1.0.26  
.EMAIL [wburdick@mt.gov](mailto:wburdick@mt.gov), [kurt.a.hansen@usda.gov](mailto:kurt.a.hansen@usda.gov)





- Fire Perimeter
- Fire Line
- Fire Line - 100' Buffer
- Fire Line - 200' Buffer
- Fire Line - 300' Buffer
- Fire Line - 400' Buffer
- Fire Line - 500' Buffer
- Fire Line - 600' Buffer
- Fire Line - 700' Buffer
- Fire Line - 800' Buffer
- Fire Line - 900' Buffer
- Fire Line - 1000' Buffer
- Fire Line - 1100' Buffer
- Fire Line - 1200' Buffer
- Fire Line - 1300' Buffer
- Fire Line - 1400' Buffer
- Fire Line - 1500' Buffer
- Fire Line - 1600' Buffer
- Fire Line - 1700' Buffer
- Fire Line - 1800' Buffer
- Fire Line - 1900' Buffer
- Fire Line - 2000' Buffer
- Fire Line - 2100' Buffer
- Fire Line - 2200' Buffer
- Fire Line - 2300' Buffer
- Fire Line - 2400' Buffer
- Fire Line - 2500' Buffer
- Fire Line - 2600' Buffer
- Fire Line - 2700' Buffer
- Fire Line - 2800' Buffer
- Fire Line - 2900' Buffer
- Fire Line - 3000' Buffer
- Fire Line - 3100' Buffer
- Fire Line - 3200' Buffer
- Fire Line - 3300' Buffer
- Fire Line - 3400' Buffer
- Fire Line - 3500' Buffer
- Fire Line - 3600' Buffer
- Fire Line - 3700' Buffer
- Fire Line - 3800' Buffer
- Fire Line - 3900' Buffer
- Fire Line - 4000' Buffer
- Fire Line - 4100' Buffer
- Fire Line - 4200' Buffer
- Fire Line - 4300' Buffer
- Fire Line - 4400' Buffer
- Fire Line - 4500' Buffer
- Fire Line - 4600' Buffer
- Fire Line - 4700' Buffer
- Fire Line - 4800' Buffer
- Fire Line - 4900' Buffer
- Fire Line - 5000' Buffer



**Operations**  
 Snider  
 September 5, 2020  
 MT-LG29-000346  
 32,494 acres





