

112°15'0"W

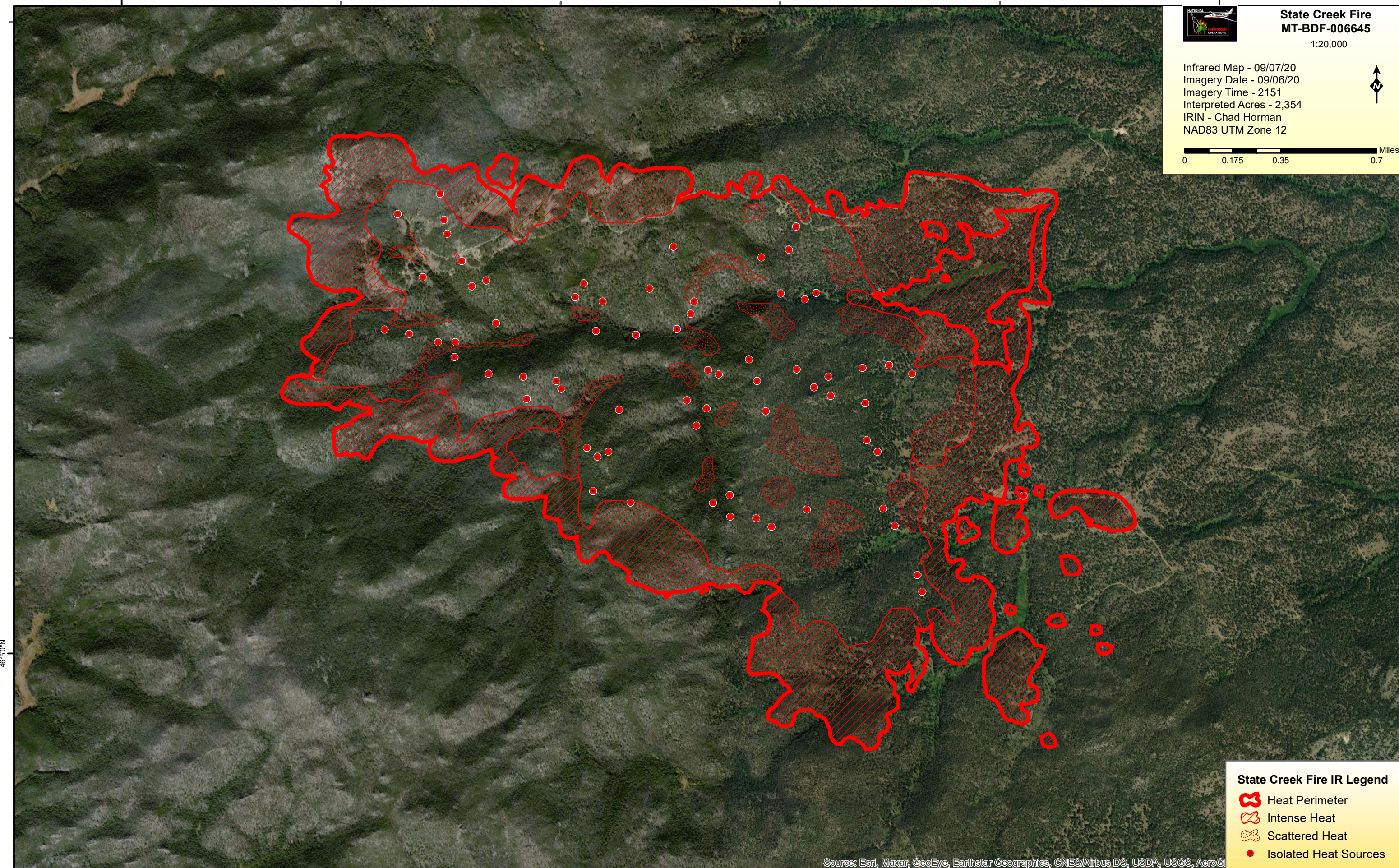
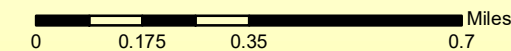
112°10'0"W



State Creek Fire MT-BDF-006645

1:20,000

Infrared Map - 09/07/20
Imagery Date - 09/06/20
Imagery Time - 2151
Interpreted Acres - 2,354
IRIN - Chad Horman
NAD83 UTM Zone 12



46°5'0"N





46°5'0"N

112°15'0"W

112°10'0"W

Source: Esri, Maxar, GeoEye, Earthstar Geographics, CNES/Airbus DS, USDA, USGS, AeroG

State Creek Fire IR Legend

-  Heat Perimeter
-  Intense Heat
-  Scattered Heat
-  Isolated Heat Sources