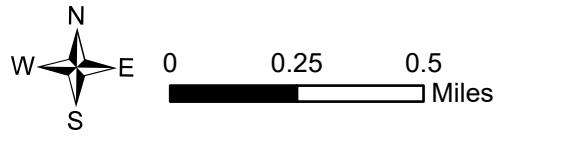


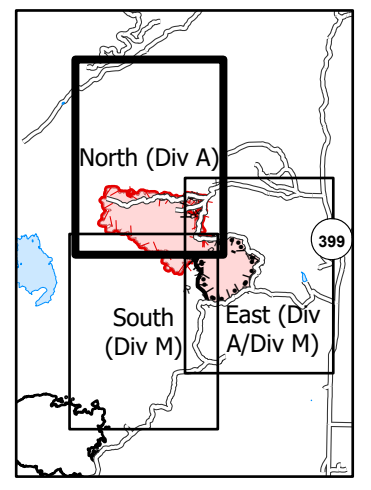
**Operations**  
 StateCreek  
 MTBDF006645  
 September 15, 2020  
 3791 acres effective 20200914

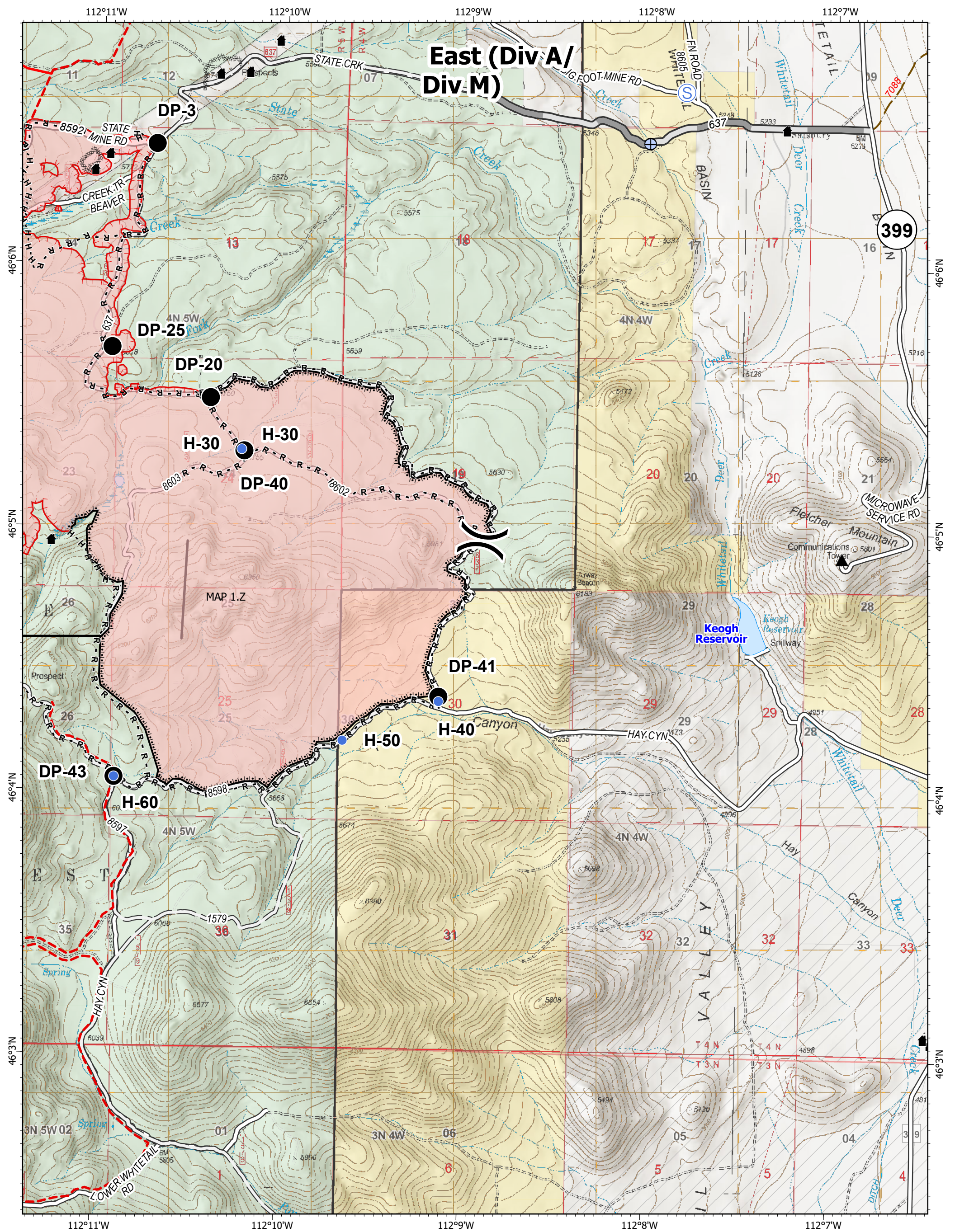


- Drop Point
- Helispot
- ⊙ Staging Area
- ⊕ Water Development or Draft Site
- Burned Structure
- Structure
- Uncontrolled Fire Edge
- ⊗ Completed Dozer Line
- ⊘ Completed Burnout
- H Completed Hand Line
- ⋈ Road as Completed Line
- Wildfire Daily Fire Perimeter
- Other Roads



Remote Situation Unit  
 9/15/2020 2035  
 Acres from IR and hand dr

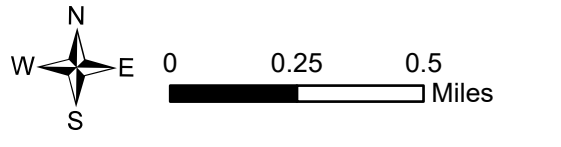




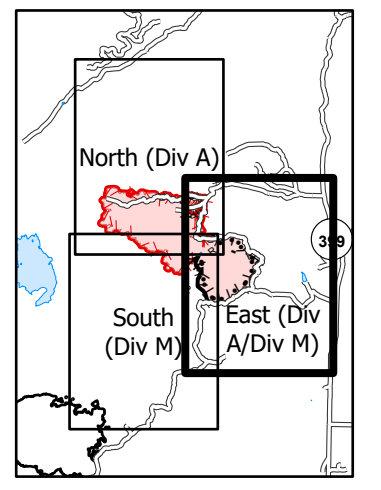
# East (Div A/ Div M)

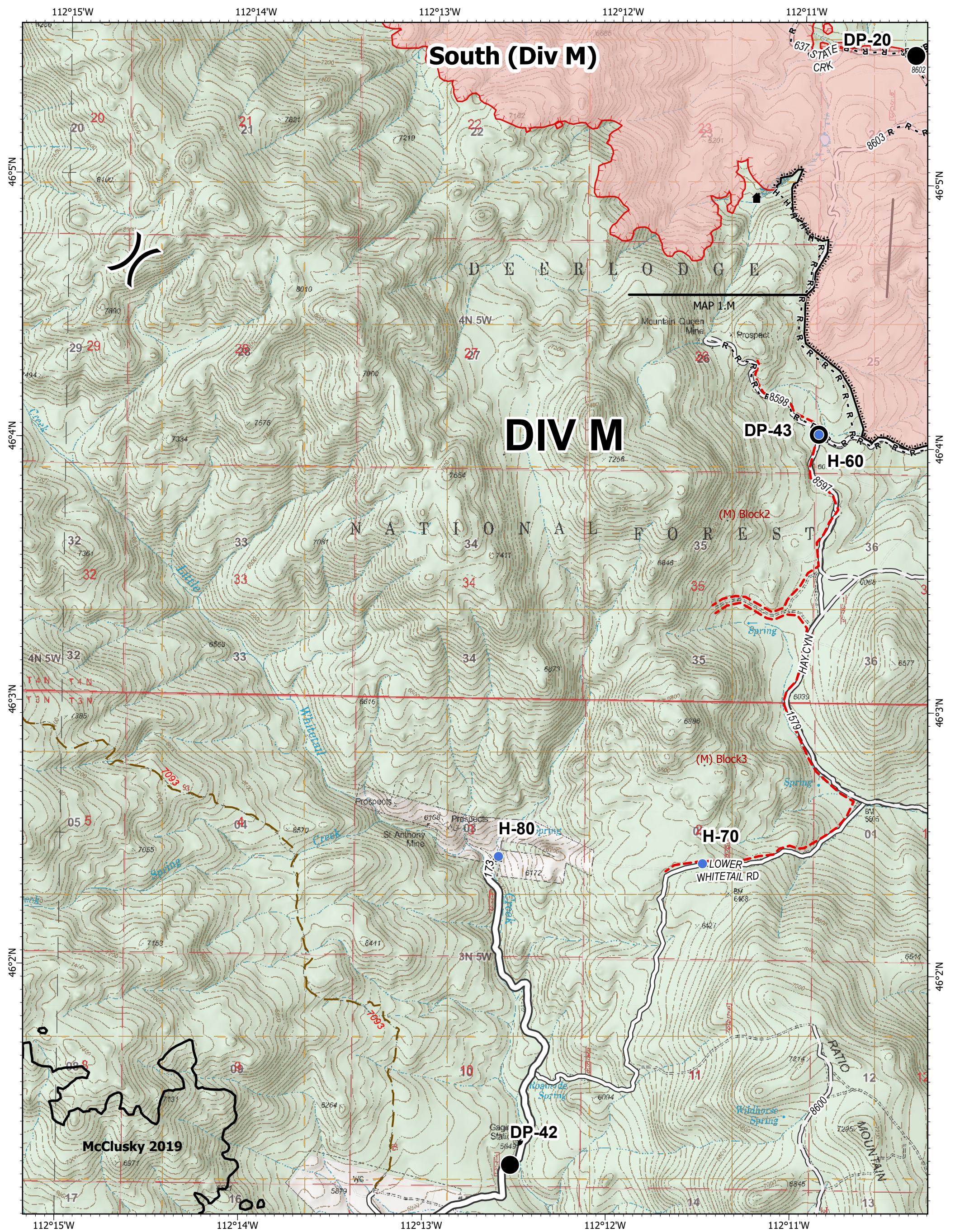
**Operations**  
 StateCreek  
 MTBDF006645  
 September 15, 2020  
 3791 acres effective 20200914

- Drop Point
- Helispot
- ⊕ Staging Area
- ⊕ Water Development or Draft Site
- ) ( Division Break
- Structure
- Uncontrolled Fire Edge
- ⊗ Completed Dozer Line
- ⊔ Completed Burnout
- H Completed Hand Line
- ⊔ Road as Completed Line
- Wildfire Daily Fire Perimeter
- Other Roads
- ▲ Communication Tower



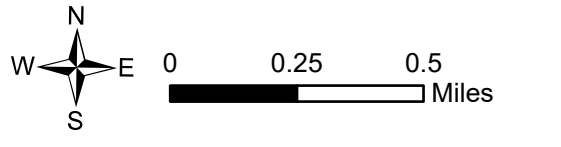
Remote Situation Unit  
 9/15/2020 2036  
 Acres from IR and hand dr





**Operations**  
 StateCreek  
 MTBDF006645  
 September 15, 2020  
 3791 acres effective 20200914

- Drop Point
- Helispot
- ) Division Break
- Structure
- Uncontrolled Fire Edge
- ▬ Completed Burnout
- H Completed Hand Line
- R Road as Completed Line
- Wildfire Daily Fire Perimeter
- Other Roads



Remote Situation Unit  
 9/15/2020 2037  
 Acres from IR and hand dr

