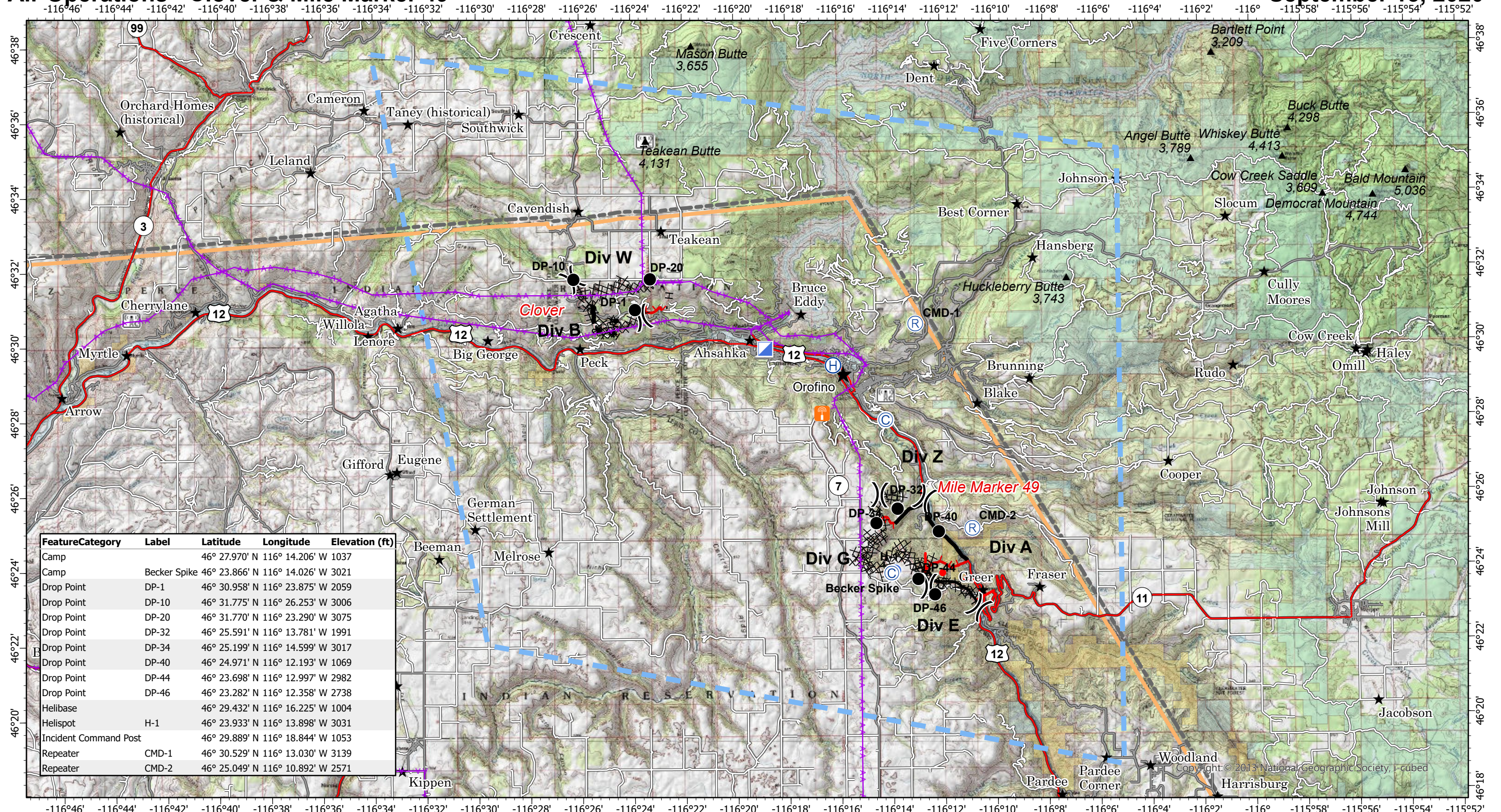


Air Operations - Clover & Mile Marker 49

September 13, 2020



FeatureCategory	Label	Latitude	Longitude	Elevation (ft)
Camp		46° 27.970' N	116° 14.206' W	1037
Camp	Becker Spike	46° 23.866' N	116° 14.026' W	3021
Drop Point	DP-1	46° 30.958' N	116° 23.875' W	2059
Drop Point	DP-10	46° 31.775' N	116° 26.253' W	3006
Drop Point	DP-20	46° 31.770' N	116° 23.290' W	3075
Drop Point	DP-32	46° 25.591' N	116° 13.781' W	1991
Drop Point	DP-34	46° 25.199' N	116° 14.599' W	3017
Drop Point	DP-40	46° 24.971' N	116° 12.193' W	1069
Drop Point	DP-44	46° 23.698' N	116° 12.997' W	2982
Drop Point	DP-46	46° 23.282' N	116° 12.358' W	2738
Helibase		46° 29.432' N	116° 16.225' W	1004
Helispot	H-1	46° 23.933' N	116° 13.898' W	3031
Incident Command Post		46° 29.889' N	116° 18.844' W	1053
Repeater	CMD-1	46° 30.529' N	116° 13.030' W	3139
Repeater	CMD-2	46° 25.049' N	116° 10.892' W	2571

Sunnyside Complex ID-CTS-000714

Fire Perimeter as of
9/12/2020 2100 hrs
3,957 Acres Clover 1632 ac; MM49 2261 ac

- (C) Camp
- (R) Repeater
- (H) Helibase
- (H) Helispot
- (ICP) Incident Command Post
- (DB) Division Break
- (TL) Transmission Lines
- (UFE) Uncontrolled Fire Edge
- (CL) Contained Line
- (CDL) Completed Dozer Line
- (H) Completed Hand Line
- (R) Road as Completed Line
- (AB) Active Burnout
- (TFR) Temporary Flight Restriction
- (P) Populated Places
- (HIFLD) HIFLD Cellular Towers
- (RBS) Radio Base Site
- (H) Highway
- (PR) Paved Roads
- (OR) Other Roads
- (NPRB) Nez Perce Reservation Boundary
- (BLM) Bureau of Land Management
- (NPS) National Park Service
- (FS) Forest Service
- (FW) Fish and Wildlife Service

0 2 4 Miles