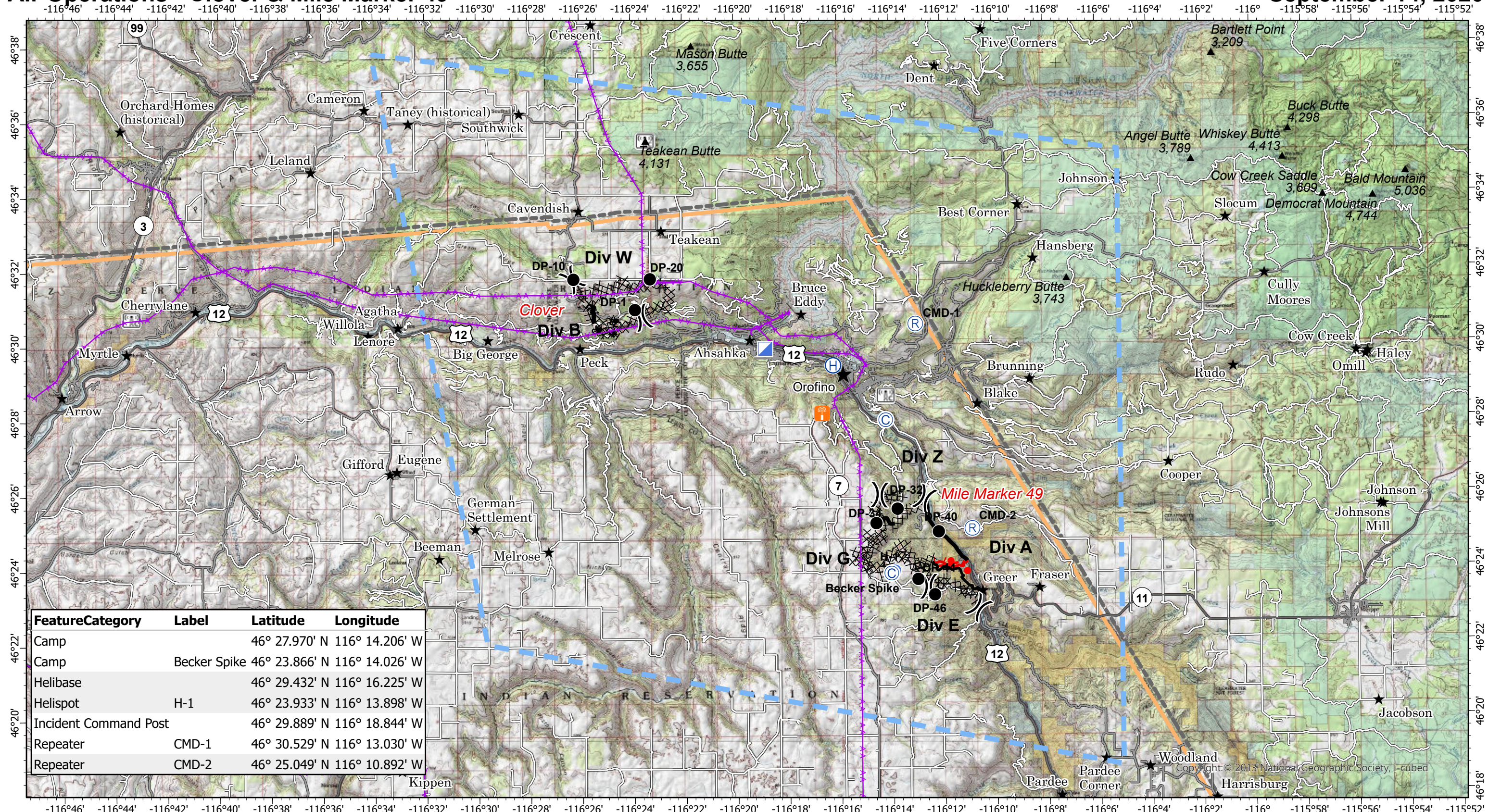


Air Operations - Clover & Mile Marker 49

September 14, 2020



Feature	Category	Label	Latitude	Longitude
Camp			46° 27.970' N	116° 14.206' W
Camp		Becker Spike	46° 23.866' N	116° 14.026' W
Helibase			46° 29.432' N	116° 16.225' W
Helispot		H-1	46° 23.933' N	116° 13.898' W
Incident Command Post			46° 29.889' N	116° 18.844' W
Repeater		CMD-1	46° 30.529' N	116° 13.030' W
Repeater		CMD-2	46° 25.049' N	116° 10.892' W

Sunnyside Complex ID-CTS-000714

Fire Perimeter as of
9/13/2020 2100 hrs
4,388 Acres Clover 1632 ac; MM49 2661 ac

- (C) Camp
- (R) Incident Command Post
- (H) Helibase
- (H) Helispot
- (DP) Drop Point
- (R) Repeater
- (X) Division Break
- (A) Uncontrolled Fire Edge
- (C) Contained Line
- (X) Completed Dozer Line
- (H) Completed Hand Line
- (R) Road as Completed Line
- (A) Active Burnout
- (B) Temporary Flight Restriction
- (S) Populated Places
- (T) HIFLD Cellular Towers
- (R) Radio Base Site
- (H) Highway
- (P) Paved Roads
- (O) Other Roads
- (B) Bureau of Land Management
- (N) National Park Service
- (F) Forest Service
- (W) Fish and Wildlife Service

