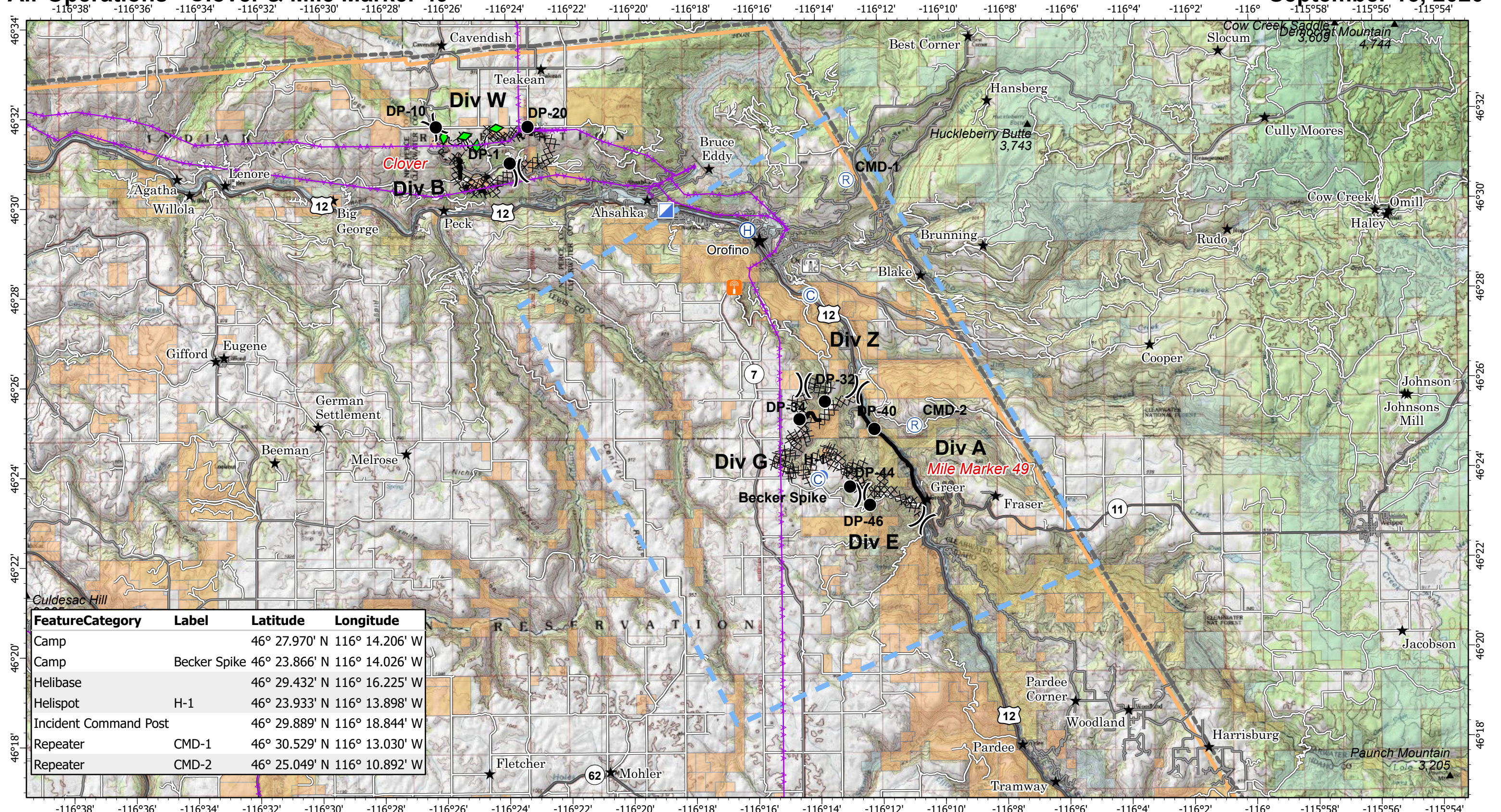


Air Operations - Clover & Mile Marker 49

September 15, 2020



Feature	Category	Label	Latitude	Longitude
Camp			46° 27.970' N	116° 14.206' W
Camp		Becker Spike	46° 23.866' N	116° 14.026' W
Helibase			46° 29.432' N	116° 16.225' W
Helispot		H-1	46° 23.933' N	116° 13.898' W
Incident Command Post			46° 29.889' N	116° 18.844' W
Repeater		CMD-1	46° 30.529' N	116° 13.030' W
Repeater		CMD-2	46° 25.049' N	116° 10.892' W

Sunnyside Complex ID-CTS-000714

Fire Perimeter as of
9/14/2020 2100 hrs
4,613 Acres Clover 1632 ac; MM49 2867 ac

- Ⓢ Camp
 Ⓡ Incident Command Post
 — Transmission Lines
 Ⓡ Road as Completed Line
 HIFLD Cellular Towers
— Paved Roads
 Bureau of Land Management
- Drop Point
 Ⓡ Repeater
 — Contained Line
 ◆ Completed Plow Line
 HIFLD Cellular Towers
— Other Roads
 National Park Service
- Ⓢ Helibase
 ⌘ Division Break
 ⌘ Completed Dozer Line
 — Temporary Flight Restriction
 📶 Radio Base Site
 Nez Perce Reservation Boundary
State of Idaho
- Helispot
 ★ Populated Places
 — Highway
 Forest Service
Fish and Wildlife Service

