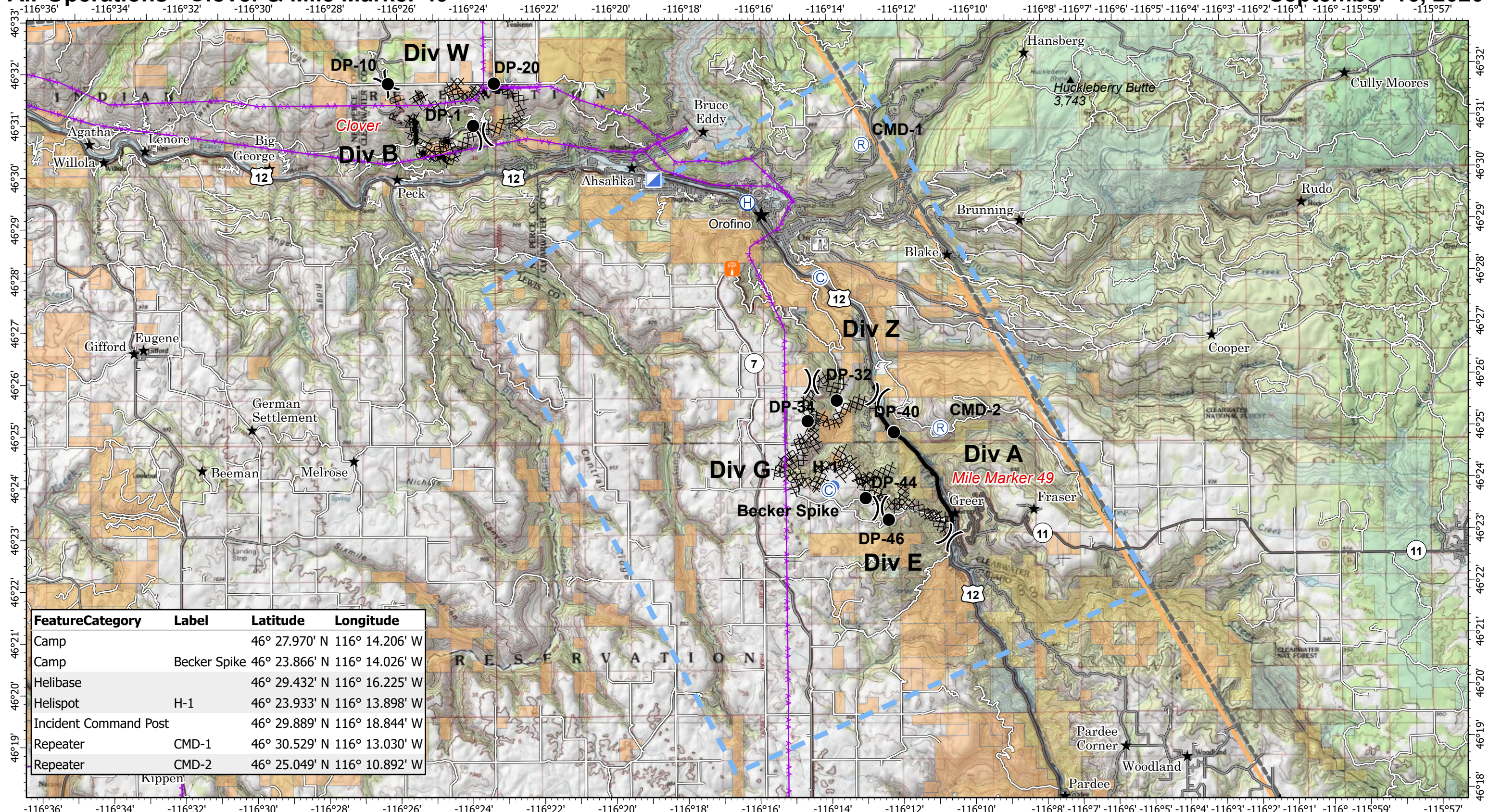


Air Operations - Clover & Mile Marker 49

September 16, 2020



Feature	Category	Label	Latitude	Longitude
Camp			46° 27.970' N	116° 14.206' W
Camp		Becker Spike	46° 23.866' N	116° 14.026' W
Helibase			46° 29.432' N	116° 16.225' W
Helispot		H-1	46° 23.933' N	116° 13.898' W
Incident Command Post			46° 29.889' N	116° 18.844' W
Repeater		CMD-1	46° 30.529' N	116° 13.030' W
Repeater		CMD-2	46° 25.049' N	116° 10.892' W

Sunnyside Complex ID-CTS-000714

Fire Perimeter as of
9/15/2020 2100 hrs
4,466 Acres Clover 1550 ac; MM49 2801 ac

- C Camp
 R Incident Command Post
 — Transmission Lines
 R Road as Completed Line
 📶 Radio Base Site
 Nez Perce Reservation Boundary
 State of Idaho
- Drop Point
 R Repeater
 — Contained Line
 — Temporary Flight Restriction
 — Highway
 Nez Perce Tribe
 Forest Service
- H Helibase
 ● Helispot
 X Completed Dozer Line
 ★ Populated Places
 — Paved Roads
 Bureau of Land Management
 Fish and Wildlife Service
- H Completed Hand Line
 HIFLD Cellular Towers
 — Other Roads
 National Park Service

0 1.5 3 Miles