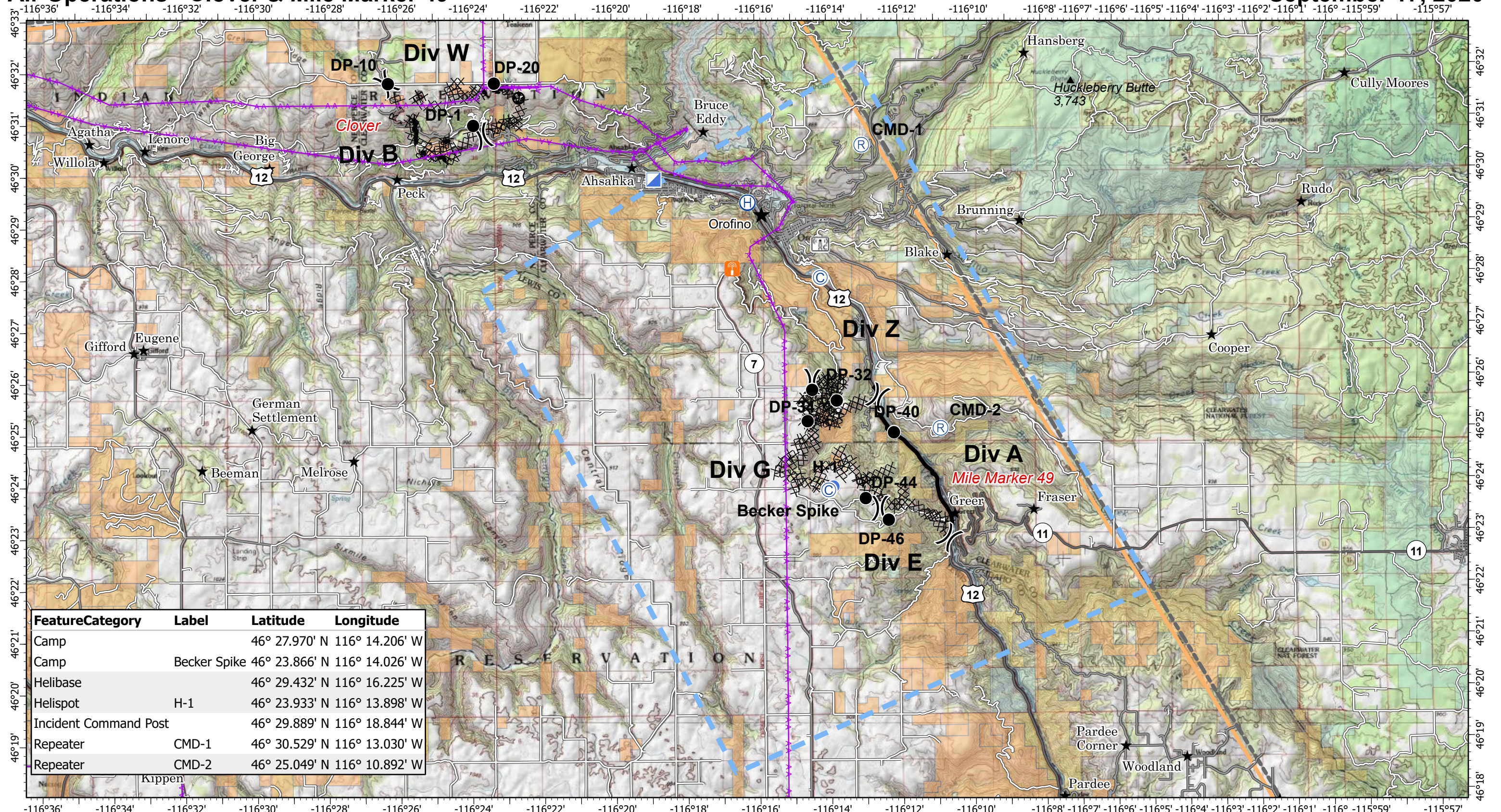


Air Operations - Clover & Mile Marker 49

September 17, 2020



Feature	Category	Label	Latitude	Longitude
Camp			46° 27.970' N	116° 14.206' W
Camp		Becker Spike	46° 23.866' N	116° 14.026' W
Helibase			46° 29.432' N	116° 16.225' W
Helispot		H-1	46° 23.933' N	116° 13.898' W
Incident Command Post			46° 29.889' N	116° 18.844' W
Repeater		CMD-1	46° 30.529' N	116° 13.030' W
Repeater		CMD-2	46° 25.049' N	116° 10.892' W

Sunnyside Complex ID-CTS-000714

Fire Perimeter as of
9/15/2020 2100 hrs
4,466 Acres Clover 1550 ac; MM49 2801 ac

- (C) Camp
- (R) Incident Command Post
- (A) Transmission Lines
- (R) Road as Completed Line
- (HIFLD) HIFLD Cellular Towers
- (P) Paved Roads
- (BLM) Bureau of Land Management
- (NPS) National Park Service
- (S) State of Idaho
- (FS) Forest Service
- (FW) Fish and Wildlife Service
- (DP) Drop Point
- (R) Repeater
- (CL) Contained Line
- (TL) Temporary Flight Restriction
- (RBS) Radio Base Site
- (H) Highway
- (BLM) Nez Perce Reservation Boundary
- (NPT) Nez Perce Tribe
- (H) Completed Hand Line
- (O) Other
- (P) Populated Places
- (DB) Division Break
- (CDL) Completed Dozer Line
- (H) Completed Hand Line
- (P) Populated Places

0 1.5 3 Miles