



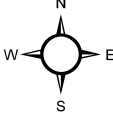
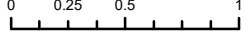
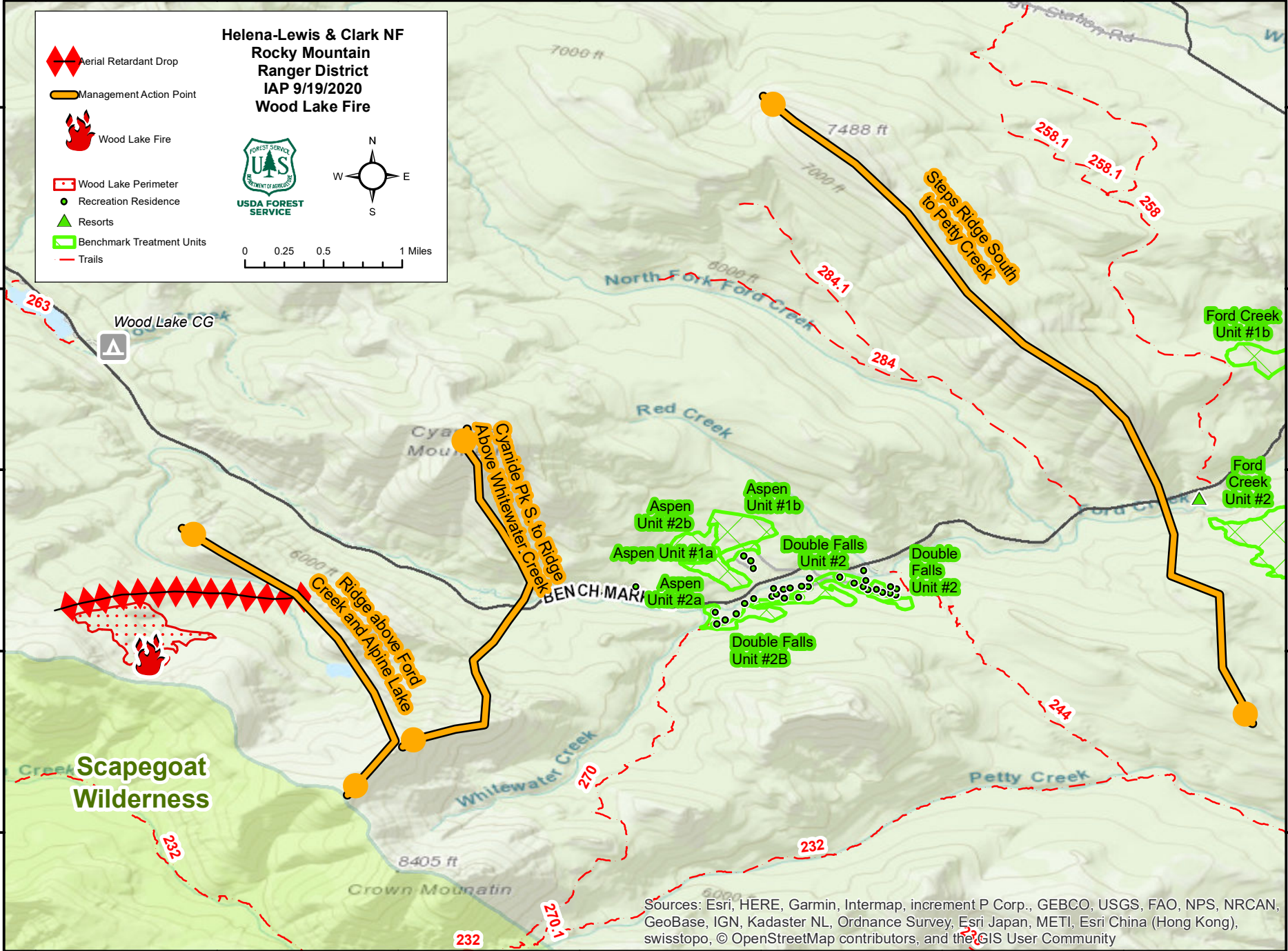
112°48'0"W 112°47'0"W 112°46'0"W 112°45'0"W 112°44'0"W 112°43'0"W 112°42'0"W

47°27'0"N
47°26'0"N
47°25'0"N
47°24'0"N
47°23'0"N

47°27'0"N
47°26'0"N
47°25'0"N
47°24'0"N
47°23'0"N

**Helena-Lewis & Clark NF
Rocky Mountain
Ranger District
IAP 9/19/2020
Wood Lake Fire**

- Aerial Retardant Drop
- Management Action Point
- Wood Lake Fire
- Wood Lake Perimeter
- Recreation Residence
- Resorts
- Benchmark Treatment Units
- Trails

112°48'0"W 112°47'0"W 112°46'0"W 112°45'0"W 112°44'0"W 112°43'0"W 112°42'0"W

Sources: Esri, HERE, Garmin, Intermap, increment P Corp., GEBCO, USGS, FAO, NPS, NRCAN, GeoBase, IGN, Kadaster NL, Ordnance Survey, Esri Japan, METI, Esri China (Hong Kong), swisstopo, © OpenStreetMap contributors, and the GIS User Community