

112°48'0"W 112°47'0"W 112°46'0"W 112°45'0"W 112°44'0"W 112°43'0"W 112°42'0"W

47°27'0"N
47°26'0"N
47°25'0"N
47°24'0"N
47°23'0"N

47°27'0"N
47°26'0"N
47°25'0"N
47°24'0"N
47°23'0"N

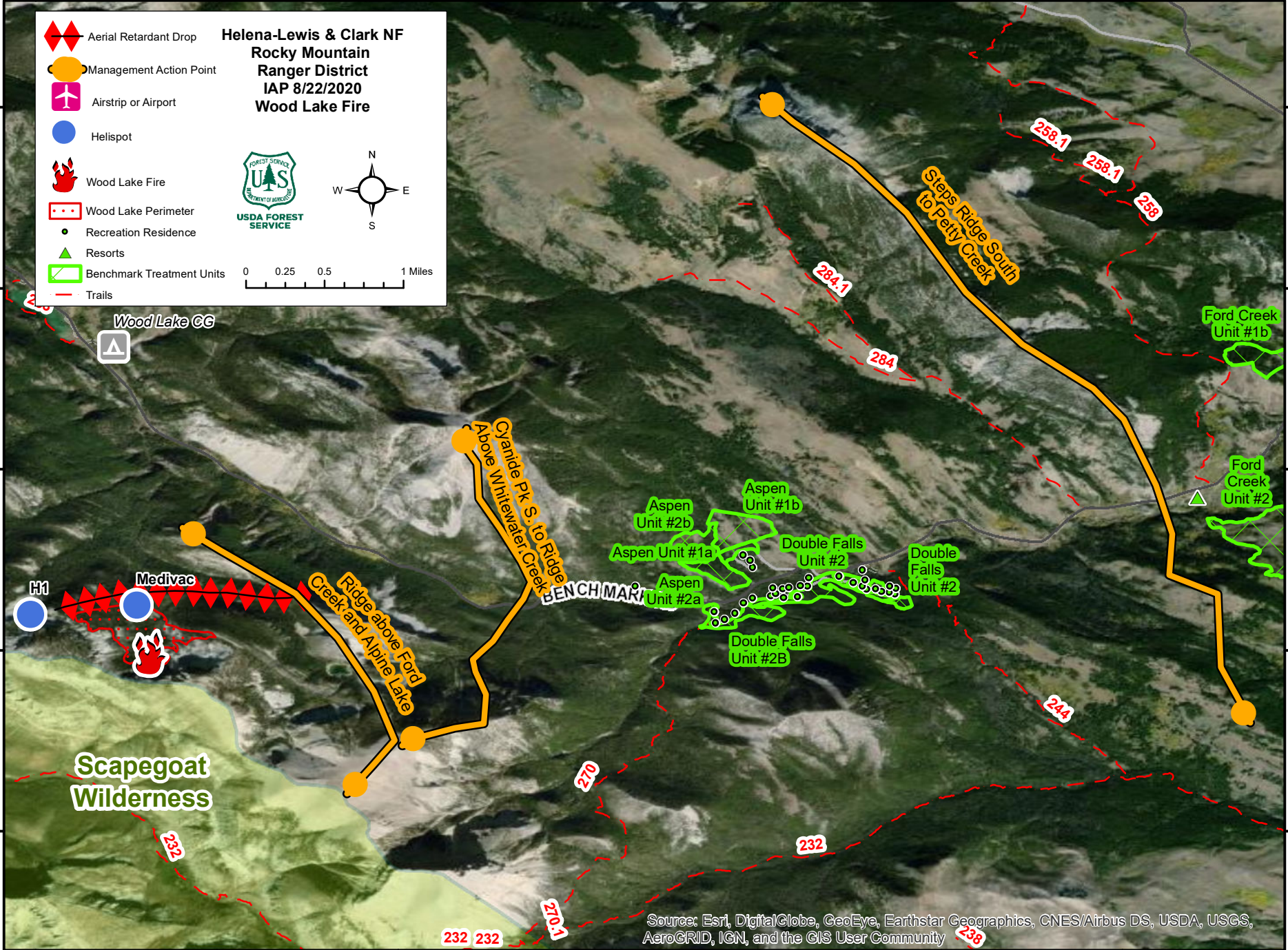
**Helena-Lewis & Clark NF
Rocky Mountain
Ranger District
IAP 8/22/2020
Wood Lake Fire**

- Aerial Retardant Drop
- Management Action Point
- Airstrip or Airport
- Helispot
- Wood Lake Fire
- Wood Lake Perimeter
- Recreation Residence
- Resorts
- Benchmark Treatment Units
- Trails

USDA FOREST SERVICE

N
W E S

0 0.25 0.5 1 Miles



112°48'0"W 112°47'0"W 112°46'0"W 112°45'0"W 112°44'0"W 112°43'0"W 112°42'0"W

Source: Esri, DigitalGlobe, GeoEye, Earthstar Geographics, CNES/Airbus DS, USDA, USGS, AeroGRID, IGN, and the GIS User Community