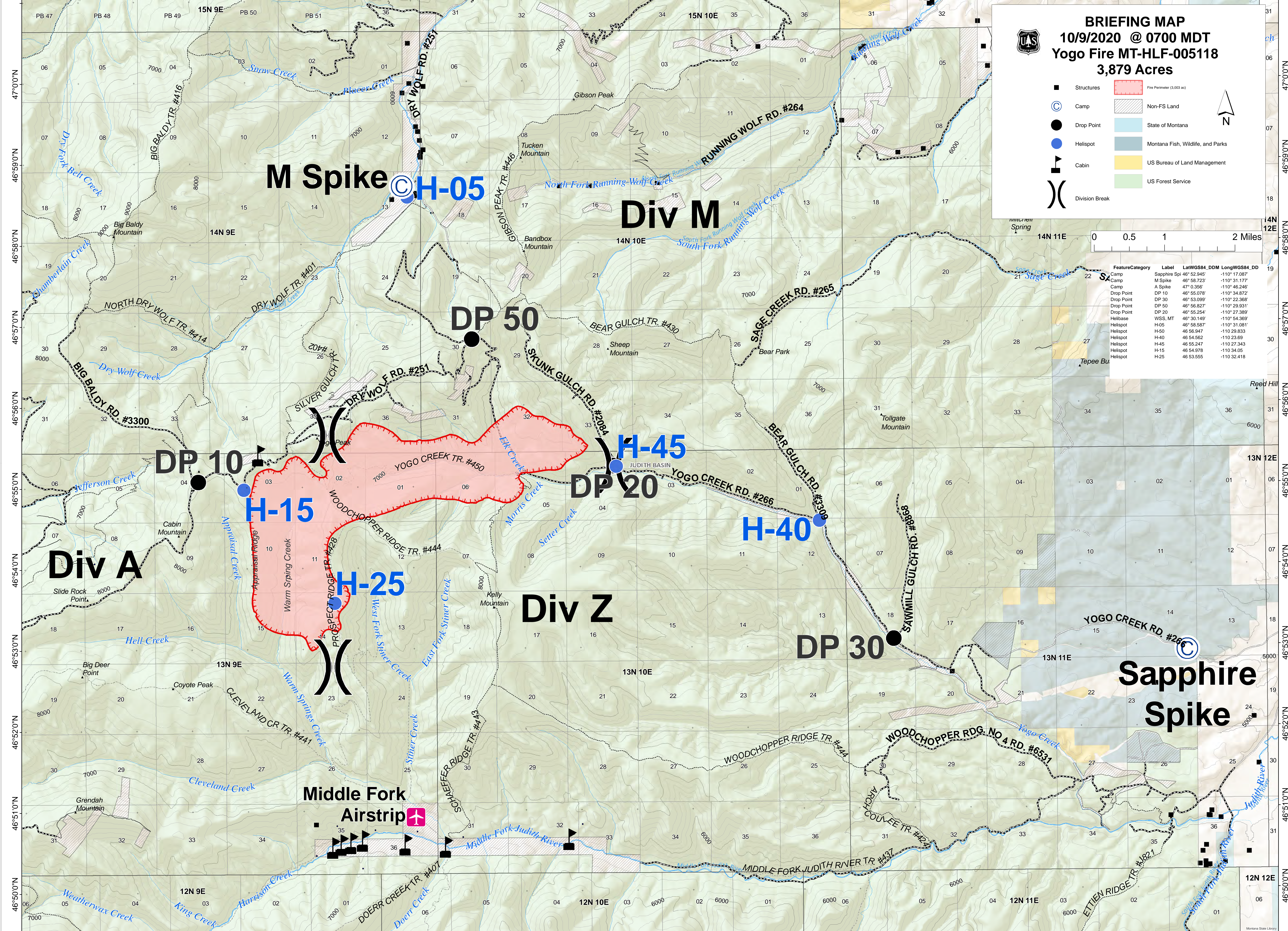


110°38'0"W 110°37'0"W 110°36'0"W 110°35'0"W 110°34'0"W 110°33'0"W 110°32'0"W 110°31'0"W 110°30'0"W 110°29'0"W 110°28'0"W 110°27'0"W 110°26'0"W 110°25'0"W 110°24'0"W 110°23'0"W 110°22'0"W 110°21'0"W 110°20'0"W 110°19'0"W 110°18'0"W 110°17'0"W 110°16'0"W



BRIEFING MAP
 10/9/2020 @ 0700 MDT
 Yogo Fire MT-HLF-005118
 3,879 Acres

- Structures
- Camp
- Drop Point
- Helispot
- Cabin
- Division Break
- Fire Perimeter (3,000 ac)
- Non-FS Land
- State of Montana
- Montana Fish, Wildlife, and Parks
- US Bureau of Land Management
- US Forest Service

0 0.5 1 2 Miles

FeatureCategory	Label	LatWGS84_DDM	LongWGS84_DD
Camp	Sapphire Spi	46° 52.945'	-110° 17.087'
Camp	M Spike	46° 58.723'	-110° 31.177'
Camp	A Spike	47° 0.356'	-110° 46.246'
Drop Point	DP 10	46° 55.078'	-110° 34.872'
Drop Point	DP 30	46° 53.099'	-110° 22.368'
Drop Point	DP 50	46° 56.827'	-110° 29.931'
Drop Point	DP 20	46° 55.254'	-110° 27.389'
Helibase	WSS, MT	46° 30.149'	-110° 54.369'
Helispot	H-05	46° 58.587'	-110° 31.081'
Helispot	H-50	46 56.947	-110 29.833
Helispot	H-40	46 54.562	-110 23.669
Helispot	H-45	46 55.247	-110 27.343
Helispot	H-15	46 54.978	-110 34.05
Helispot	H-25	46 53.555	-110 32.418

110°38'0"W 110°37'0"W 110°36'0"W 110°35'0"W 110°34'0"W 110°33'0"W 110°32'0"W 110°31'0"W 110°30'0"W 110°29'0"W 110°28'0"W 110°27'0"W 110°26'0"W 110°25'0"W 110°24'0"W 110°23'0"W 110°22'0"W 110°21'0"W 110°20'0"W 110°19'0"W 110°18'0"W 110°17'0"W 110°16'0"W