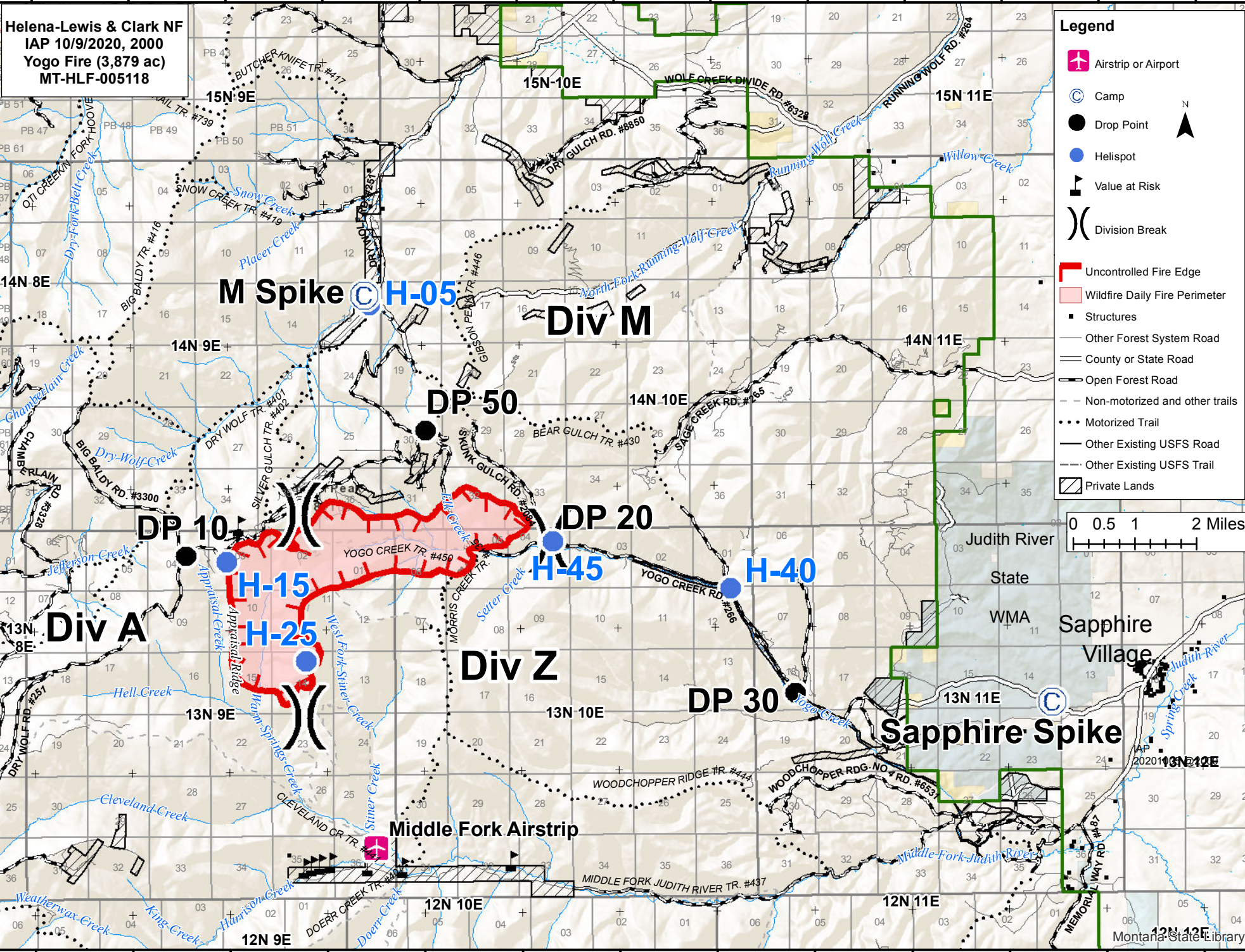
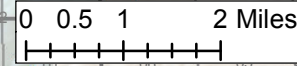


110°38'W 110°36'W 110°34'W 110°32'W 110°30'W 110°28'W 110°26'W 110°24'W 110°22'W 110°20'W 110°18'W 110°16'W 110°14'W



Helena-Lewis & Clark NF  
IAP 10/9/2020, 2000  
Yogo Fire (3,879 ac)  
MT-HLF-005118

- Legend**
- Airstrip or Airport
  - Camp
  - Drop Point
  - Helispot
  - Value at Risk
  - Division Break
  - Uncontrolled Fire Edge
  - Wildfire Daily Fire Perimeter
  - Structures
  - Other Forest System Road
  - County or State Road
  - Open Forest Road
  - Non-motorized and other trails
  - Motorized Trail
  - Other Existing USFS Road
  - Other Existing USFS Trail
  - Private Lands



110°38'W 110°36'W 110°34'W 110°32'W 110°30'W 110°28'W 110°26'W 110°24'W 110°22'W 110°20'W 110°18'W 110°16'W 110°14'W

47°2'N  
47°0'N  
46°58'N  
46°56'N  
46°54'N  
46°52'N  
46°50'N

47°2'N  
47°0'N  
46°58'N  
46°56'N  
46°54'N  
46°52'N  
46°50'N

M Spike

Div M

Div A

Div Z

Sapphire Spike

Middle Fork Airstrip

Montana State Library

DP 10

DP 50

DP 20

DP 30

H-15

H-25

H-45

H-40

47°2'N  
47°0'N  
46°58'N  
46°56'N  
46°54'N  
46°52'N  
46°50'N

47°2'N  
47°0'N  
46°58'N  
46°56'N  
46°54'N  
46°52'N  
46°50'N