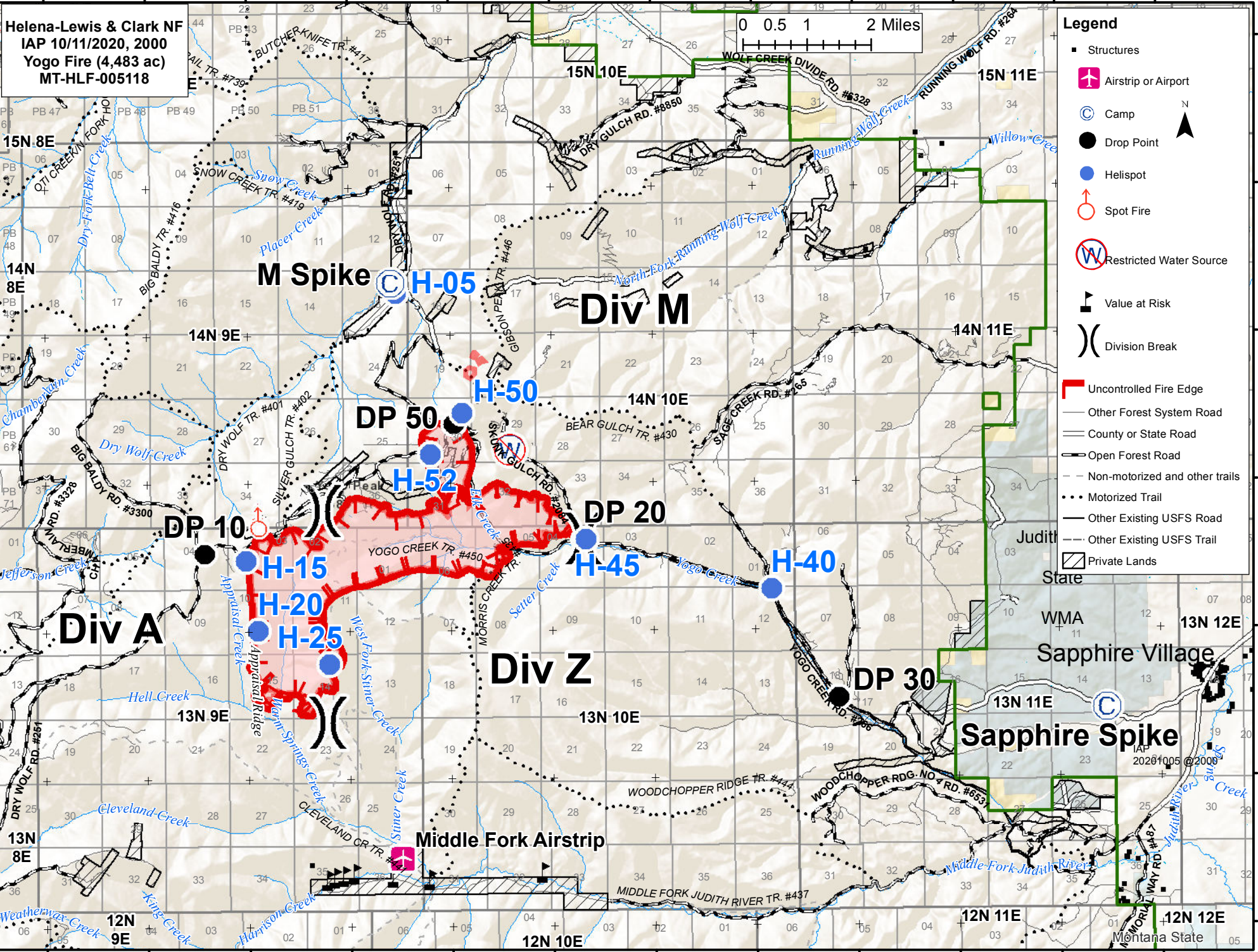


110°38'W 110°36'W 110°34'W 110°32'W 110°30'W 110°28'W 110°26'W 110°24'W 110°22'W 110°20'W 110°18'W 110°16'W



Helena-Lewis & Clark NF
IAP 10/11/2020, 2000
Yogo Fire (4,483 ac)
MT-HLF-005118

0 0.5 1 2 Miles

- Legend**
- Structures
 - ✈ Airstrip or Airport
 - ⊙ Camp
 - Drop Point
 - Helispot
 - ⊕ Spot Fire
 - ⊘ Restricted Water Source
 - ⚠ Value at Risk
 - ⌋ Division Break
 - ▬ Uncontrolled Fire Edge
 - ▬ Other Forest System Road
 - ▬ County or State Road
 - ▬ Open Forest Road
 - ▬ Non-motorized and other trails
 - ⋯ Motorized Trail
 - ▬ Other Existing USFS Road
 - ▬ Other Existing USFS Trail
 - ▨ Private Lands

M Spike

Div M

Div A

Div Z

Sapphire Spike

Middle Fork Airstrip

Sapphire Village

Judith State

WMA

Montana State

IAP 20201005 @2000

110°38'W 110°36'W 110°34'W 110°32'W 110°30'W 110°28'W 110°26'W 110°24'W 110°22'W 110°20'W 110°18'W 110°16'W

47°2'N
47°0'N
46°58'N
46°56'N
46°54'N
46°52'N
46°50'N

47°2'N
47°0'N
46°58'N
46°56'N
46°54'N
46°52'N
46°50'N