

Alder Creek

MT-BDF-006269
P1N5G3 (0102)

Trail Creek

MT-BDF-006272
P1N5HE (0102)

Sand Lake

MT-BDF-006386
P1N9DB (0102)

4 Day INCIDENT ACTION PLAN
October 11-14, 2021

Day Operations 0600-2200



COVID Self-Test,
IAP, Maps,
Check-In, Time, Demob

<https://tinyurl.com/y8k4tur8>

INCIDENT OBJECTIVES

1. Incident Name
Trail Creek, Alder Creek and Sand Lake Fires

2. Date Prepared
10/10/2021

3. Time Prepared
1900

4. Objectives

High Value Assets and Resources to be Protected:

- Town of Wise River, Gibbonsville, Moose Creek Estates, Highways 43, 73 and 93, private residences, critical utilities and other infrastructure, local businesses, campgrounds and recreational trails and facilities.
- Big Hole Battlefield, timber, grazing and range allotments, ESA listed fish species and other species habitat, and cultural, historic and heritage sites.
- Waterways and riparian areas.

Leader's Intent:

- Human Safety. Firefighter, public and aviation safety will be given the highest priority at all times.
- Engage fires in areas that have the highest probability of success of protecting life, property and other identified values at risk commensurate with confine and containment objectives, and recognizing that resources are scarce.
- Ensure strategic and safety conditions are such that ensure the highest probability of success.
- Minimize public and responder exposure to transmission or infection from COVID-19 by following CDC Covid guidelines and the protocols specified in the Agency Administrators' *Leader's Intent*.
- Fire retardant will not be used in avoidance areas except when necessary to protect public and firefighter life safety.

Operational Objectives:

- Use direct, indirect and point source suppression strategies to suppress and/or guide the fires into natural and man-made barriers.
- Keep Trail Creek fire East of Highway 93, North of Lick Creek and South of Tie Creek.
- Keep Alder Creek fire South of Highway 43
- Act with appropriate prioritization if presented with the opportunity to rehabilitate resource damage caused by suppression actions.
- Prevent spread of aquatic invasive species.

5. Prepared By (Planning Section Chief):
Jonah Vaughan

6. Approved By (Incident Commander)
Paul Diaz

ORGANIZATIONAL ASSIGNMENT LIST (ICS 203)	1. Incident: Alder Creek / Trail Creek	2. Date Prepared: 10/10/2021	
3. Time Prepared: 2000 hrs	4. Operational Period: October 11-14, 2021 0600-2200	DAY Operations	
5. Incident Commanders		8. Logistics Section	
Incident Commander	Paul Diaz	Chief	Donovan Suko
Incident Commander (T)	Whitney Machado (T)	Ordering Manager	Perry Stebbins
Safety Officer	Adam Carr	Medical Unit	Raymond Mines
Information Officer		Communications	
6. Agency Representatives		INCM	
BDNF Forest Supervisor	Cheri Ford	Supply Unit	Al Wisdom
BDNF Agency Administrator	Molly Ryan	Facility Unit	Randy Rector
BRNF Agency Representative	Eric Winthers	Ground Support	Clarence Ferguson
SCNF Agency Administrator	Heather DeGeest	Food Unit	
SCNF Agency Representative	Ken Gebhardt	Base Camp Manager	Tammy Swickey
Big Hole Battlefield Agency Admin	Steve Thede	9. Operations Section	
Big Hole Battlefield Agency Rep	Ashley Adams	Operations Chief	Richard Griffin (Trail) Mike King (Alder)
BLM Western MT Agency Admin	Katie Stevens	Planning Ops	Cory Rennaker (T)
BLM Butte Agency Representative	Lindsey Babcock	a. Trail Creek	
BLM Dillon Agency Representative	Amanda James	DIV A / B / D / F	Greg Schenk
MT DNRC Agency Administrator	Hoyt Richards		
MT DNRC Agency Representative	Tim Egan	c. Alder Creek	
Eastern Area Manager, IDL	Pat Brown	DIV O	Charles McDonald (T)
6b. Cooperators		DIV K/M	Unstaffed
Chief of Police, Anaconda	Bill Sather	DIV N	Rory Anderton, Cory Thompson (T)
County Commissioner, Beaverhead County	Tom Rice		
Beaverhead County Sheriff	Paul Craft	d. Sand Lake	
Beaverhead DES Coordinator	Tom Wagenknecht	Unstaffed	
Butte/Silverbow County Sheriff	Ed Lester		
Butte/Silverbow County Emergency Fire Service	Brian Doherty	e. Air Operations Branch	
Lemhi County Sheriff	Steve Penner	AOBD	
Ravalli County Sherriff	Steve Holton	ASGS	
7. Planning Section		Helibase Manger	
Chief	Jonah Vaughan	10. Finance Section	
Resource Unit		Chief	Joyce Anderson (V), Berta Lee Mottern(V), Ann Vogt (V), Erin Lally
Demob Unit	Vicki Stephens (V)	Deputy	
Documentation Unit	Seward Hamilton (V)	Procurement Unit	Amelia Velasco (V)
Situation Unit		Comp/Claims Unit	
GIS		Time Unit	
Fire Behavior		Cost Unit	Meg Geary (V)
Lead READ	Katie Bonogofsky	Incident Business Advisor	
ITSS			
Human Resource Specialist			
LTAN			
IMET			Prepared by Plans Chief: J. Vaughan

Spot Forecast for Trail Creek Fire
National Weather Service Missoula MT
1259 PM MDT Sun Oct 10 2021

Forecast is based on forecast start time of 0700 MDT on October 11.
If conditions become unrepresentative...contact the National Weather Service.

.DISCUSSION...Cold temperatures, snow, and a switch to northeast winds are the main focus through Tuesday. The probabilities for specific snow amounts by Monday afternoon are as follows:

Greater than 1 inch.....80 percent
Greater than 2 inches...65 percent
Greater than 4 inches...20 percent

Snow looks to continue through Monday night with light additional accumulations. The gradient will begin to relax on Tuesday so winds will gradually decrease through the day.

.MONDAY...

- * Sky/Weather.....Cloudy. Snow likely.
- * CWR (> 0.10 Inch)...60 percent.
- * Max Temperature.....28-33.
- * Min Humidity.....54-59 percent.
- * Wind (20 ft).....Northeast 5-13 mph gusts around 20 mph.
- * Haines Index.....2 very low.
- * Precip Amount.....0.15 inches.

.MONDAY NIGHT...

- * Sky/Weather.....Mostly cloudy. Chance of snow.
- * CWR (> 0.10 Inch)...Less than 10 percent.
- * Min Temperature.....18-23.
- * Max Humidity.....79-84 percent.
- * Wind (20 ft).....Northeast 5-13 mph gusts 20-25 mph.
- * Precip Amount.....0.01 inches.

.TUESDAY...

- * Sky/Weather.....Mostly cloudy. Slight chance of snow in the morning.
- * CWR (> 0.10 Inch)...Less than 10 percent.
- * Max Temperature.....31-36.
- * Min Humidity.....48-53 percent.
- * Wind (20 ft).....Northeast 5-10 mph.
- * Haines Index.....2 very low.
- * Precip Amount.....0.00 inches.

\$\$

Forecaster...Kitsmiller
Requested by...Jonah Vaughan
Type of request...WILDFIRE
.TAG 2119312.0/MSO
.DELDT 10/10/21
.FormatterVersion 2.0.0
.EMAIL jonah_vaughan@firenet.gov

FNUS75 KMSO 101917
FWSMSO

Spot Forecast for Alder Creek Fire
National Weather Service Missoula MT
117 PM MDT Sun Oct 10 2021

Forecast is based on forecast start time of 0700 MDT on October 11.
If conditions become unrepresentative...contact the National Weather
Service.

.DISCUSSION...Cold temperatures, snow, and a switch to northeast
winds are the main focus through Tuesday. The probabilities for
specific snow amounts by Monday afternoon are as follows:

Greater than 1 inch....70-80 percent
Greater than 2 inches...60-70 percent
Greater than 4 inches...20-30 percent

Snow looks to continue through Tuesday with light additional
accumulations. The gradient will begin to relax on Tuesday so winds
will gradually decrease through the day.

.MONDAY...

- * Sky/Weather.....Cloudy. Snow likely.
- * CWR (> 0.10 Inch)...70 percent.
- * Max Temperature.....23-28.
- * Min Humidity.....67-72 percent.
- * Wind (20 ft).....Northeast 5-13 mph gusts 20-25 mph.
- * Haines Index.....2 very low.
- * Precip Amount.....0.26 inches.

.MONDAY NIGHT...

- * Sky/Weather.....Cloudy. Chance of snow.
- * CWR (> 0.10 Inch)...50 percent.
- * Min Temperature.....16-21.
- * Max Humidity.....80-85 percent.
- * Wind (20 ft).....Northeast 9-16 mph with gusts to around 30
mph.
- * Precip Amount.....0.15 inches.

.TUESDAY...

- * Sky/Weather.....Mostly cloudy. Chance of snow in the morning.
- * CWR (> 0.10 Inch)...10 percent.
- * Max Temperature.....24-29.
- * Min Humidity.....62-67 percent.
- * Wind (20 ft).....Northeast 8-16 mph.
- * Haines Index.....2 very low.
- * Precip Amount.....0.01 inches.

\$\$
Forecaster...Kitsmiller
Requested by...Jonah Vaughan
Type of request...WILDFIRE
.TAG 2119313.0/MSO
.DELDT 10/10/21
.FormatterVersion 2.0.0
.EMAIL jonah_Vaughan@firenet.gov

ASSIGNMENT LIST		1. Branch	2. A, B, D, F			
3. Incident Name TRAIL CREEK		4. Operational Period Date: 10/11/21-10/14/21		Time: 0600-2200		
5. Operations Personnel						
Operations Chief	Richard Griffin		Division/Group Supervisor	Greg Schenk (10/14)		
Operations Chief - Planning	Cory Rennaker (T)		Helibase Manger			
6. Resources Assigned This Period						
Strike Team/Task Force/ Resource Designator	Last Shift	Leader	No. Pers.	Trans. Needed	Drop Off PT./Time	Pick Up PT./Time
O-455 TFLD (T)	10/18	Kasey Craft	1		ICP / 0600	ICP / 2200
O-433 HEQB (T)	10/11	Cody Hoover	1		ICP / 0600	ICP / 2200
O-434 HEQB (T)	10/11	Kyle Cole	1		ICP / 0600	ICP / 2200
O-444 HEQB (T)	10/11	Zach Lee	1		ICP / 0600	ICP / 2200
IA MOD WISDOM	L/L	Zachariah Sachs	5		ICP / 0600	ICP / 2200
IA MOD WISE RIVER	L/L		5		ICP / 0600	ICP / 2200
E-274 BHOE Rocky Mtn Aggregates	10/18	Drake Horvath	2			
E-261 WTT2 WILDFIRE RESOURCES	10/26	Dean Fowler	1		ICP / 0600	ICP / 2200
On R/R for 10/11 and 10/12						
E-198 GRAD CC STACKING	10/26	Craig Cornell	1		ICP / 0600	ICP / 2200
On R/R for 10/11 and 10/12						
7. Control Operations						
<p>Task: Prioritize suppression repair work to be accomplished before inclement weather establishes over fire area.</p> <p>Purpose: Complete all hand suppression repair work.</p> <p>End State: Maximize effectiveness of current suppression repair work to prevent additional resource damage in the future.</p>						
8. Special Instructions						
<p>Be respectful of private land and minimize suppression impacts. Keep ground disturbance to a minimum. Do not use heavy equipment on the Big Hole Battlefield. Work with Mandi Wick regarding repair needs on Big Hole National Battlefield.</p> <p>Work closely with READs.</p> <p>Prioritize suppression repair work to areas of greatest concern.</p> <p>Back-haul to drop points; call Ground Support when needed.</p>						
9. Division/Group Communication Summary						
Ch. #	Function	RX Freq.	TX Freq.	TX Tone	Comments	
8	TRAIL COMMAND	173.18750	164.38750	136.5		
10	A/G 29	166.90000	166.90000	141.3		
12	COM 1	166.61250	166.61250	131.8		
13	COM 2	163.71250	163.71250	131.8		
14	COM 3	167.13750	167.13750	131.8		
15	MEDEVAC A/G TAN	155.34000	155.34000	156.7		
Prepared by (RESL) Jonah vaughan		Approved by (PSC3) Jonah vaughan		Date 10/10/21	Time 1900	

ASSIGNMENT LIST		1. Branch	2. Division/Group			
3. Incident Name		4. Operational Period		N		
ALDER CREEK		Date: 10/11/21 – 10/14/21		Time: 0600-2200		
5. Operations Personnel						
Operations Chief - Line	Mike King	Division/Group Supervisor	Rory Anderton 10/11, Cory Thompson (T)			
Operations Chief - Planning	Cory Rennaker (T)	Helibase Manger				
6. Resources Assigned This Period						
Strike Team/Task Force/ Resource Designator	Last Shift	Leader	No. Pers.	Trans. Needed	Drop Off PT./Time	Pick Up PT./Time
O-672 HEQB	10/12	Katie Maclachlan	1		ICP / 0600	ICP / 2200
O-676 CASCADE WFM	10/11	Shane Kelly	10		ICP / 0600	ICP / 2200
IA MOD WISE RIVER	L/L		5		ICP / 0600	ICP / 2200
C-66 HC21 MILLER TIMBER SERVICES	10/11	Mark Bond	20		ICP / 0600	ICP / 2200
E-85 SKG2 TIMBER SOLUTIONS	10/24	Jeff Nelson	2		ICP / 0600	ICP / 2200
7. Control Operations						
<p>Task: Move logs from private land to BLM land on Orr/Fishtrap road. Suppression Repair dozer line on DIVS M.</p> <p>Purpose: Repair suppression damage</p> <p>End State: Fire damage is minimized and return to pre-fire condition.</p>						
8. Special Instructions						
<p>Prioritize suppression repair work to areas of greatest concern. Work closely with READs.</p>						
9. Division/Group Communication Summary						
Ch. #	Function	RX Freq.	TX Freq.	TX Tone	Comments	
10	A/G 29	166.90000	166.90000	141.3		
12	COM 1	166.61250	166.61250	131.8		
13	COM 2	163.71250	163.71250	131.8		
14	COM 3	167.13750	167.13750	131.8		
15	MEDEVAC A/G TAN	155.34000	155.34000	156.7		
Prepared by (RESL)		Approved by (PSC3)		Date		Time
Jonah vaughan		Jonah vaughan		10/10/21		1900

ASSIGNMENT LIST		1. Branch	2. Division/Group			
3. Incident Name		4. Operational Period		O		
ALDER CREEK		Date: 10/11/21 – 10/14/21		Time: 0600-2200		
5. Operations Personnel						
Operations Chief - Line	Mike King	Division Supervisor	Charles McDonald (T) (10/15)			
Operations Chief - Planning	Cory Rennaker (T)	Helibase Manger				
6. Resources Assigned This Period						
Strike Team/Task Force/ Resource Designator	Last Shift	Leader	# Pers.	Trans	Drop Off PT./Time	Pick Up PT./Time
O-402 EMPF	10/11	Rebecca Wallace	1		ICP / 0600	ICP / 2200
7. Control Operations						
<p>Task: Monitor fire, help with breaking down camp and any other needs.</p> <p>Purpose: Fire camp is broken down and fire is downsized to the lowest management level.</p> <p>End State: We put this fire to bed.</p>						
8. Special Instructions						
<p>Prewash equipment prior to arriving at weed wash.</p> <p>Prioritize suppression repair work to areas of greatest concern.</p>						
9. Division/Group Communication Summary						
Ch. #	Function	RX Freq.	TX Freq.	TX	Comments	
10	A/G 29	166.90000	166.90000	141.3		
12	COM 1	166.61250	166.61250	131.8		
13	COM 2	163.71250	163.71250	131.8		
14	COM 3	167.13750	167.13750	131.8		
15	MEDEVAC A/G TAN	155.34000	155.34000	156.7		
Prepared by (RESL)		Approved by (PSC3)		Date		Time
Jonah vaughan		Jonah vaughan		10/10/21		1900

ASSIGNMENT LIST		1. Branch		2. Division/Group			
3. Incident Name		4. Operational Period		K/M/Sand Lake			
ALDER CREEK		Date: 10/11/21-10/14/21		Time: 0600-2200			
5. Operations Personnel							
Operations Chief - Line	Mike King		Division/Group Supervisor	UNSTAFFED			
Operations Chief - Planning	Cory Rennaker (T)		Air Support Group Supervisor				
6. Resources Assigned This Period							
Strike Team/Task Force/ Resource Designator	Last Shift	Leader	No. Pers.	Trans. Needed	Drop Off PT./Time	Pick Up PT./Time	
7. Control Operations							
Task:							
Purpose:							
End State:							
8. Special Instructions							
9. Division/Group Communication Summary							
Function	Frequency - RX	Frequency - TX	Tone	Channel	Comments		
Prepared by (RESL)		Approved by (PSC3)		Date		Time	
Jonah vaughan		Jonah vaughan		10/10/21		1900	

INCIDENT RADIO COMMUNICATIONS PLAN (ICS 205)

1. Incident Name Trail Creek/Alder	2. Date/Time Prepared: Date: 10/10/2021 Time: 1700	3. Operational Period: Date From: 10/11/2021 Date To: 10/14/2021 Time From: 0600 Time To: 2200
--	--	---

4. Basic Radio Channel Utilization

Ch. #	Function	Channel Name	Assignment	RX Freq.	RX Tone	TX Freq.	TX Tone	Band	Remarks
1	TACTICAL	PROJECT		168.75000	000.0	168.75000	131.8	N	
2	COMMAND	BIGHOLE DIR	ALL	173.08750	000.0	173.08750	123.0	N	BIGHOLE DIRECT REPEATER
3	COMMAND	ODELL	ALL	173.08750	000.0	165.72500	167.9	N	FOREST REPEATER
4	COMMAND	TIE CREEK	ALL	173.08750	000.0	165.72500	136.5	N	
5	COMMAND	DICKIE PK	ALL	173.08750	000.0	165.72500	151.4	N	FOREST REPEATER
6	COMMAND	VIAPOND	ALL	173.08750	000.0	165.72500	103.5	N	
8	COMMAND	TRAIL	TRAIL CR	173.18750	000.0	164.38750	136.5	N	SOA LOST TRAIL PASS
9	COMMAND	SELWAY PK	ALL	172.35000	000.0	165.75000	107.2	N	FOREST REPEATER
10	AIR TO GROUND	A/G 29	PRIMARY	166.90000	000.0	166.90000	141.3	N	
11	AIR TO GROUND	A/G 26	SECONDARY	166.68750	000.0	166.68750	151.4	N	
12	TACTICAL	COM 1		166.61250	000.0	166.61250	131.8	N	
13	TACTICAL	COM 2		163.71250	000.0	163.71250	131.8	N	
14	TACTICAL	COM 3		167.13750	000.0	167.13750	131.8	N	
15	AIR TO GROUND	TAN	MEDEVAC	155.34000	000.0	155.34000	156.7	N	
16	AIRGUARD	AIRGUARD	ALL	168.62500	000.0	168.62500	110.9	N	

5. Prepared by: Name: Jonah Vaughan PSC3 Signature: _____

ICS 205	IAP Page _____	
----------------	----------------	--

MEDICAL PLAN (ICS 206 WF)

1. Incident/Project Name			2. Operational Period – Day and Night Shift					
Alder Creek / Trail Creek			Date/Time 10/11-14/2021 0600 hrs – 2200 hrs					
3. Ambulance Services								
Name	Complete Address	Phone EMS Frequency	Advanced Life Support (ALS)					
			Yes	No				
Beaverhead Ambulance	330 E. Reeder St, Dillon, MT	911 or 406.683.2833	X					
Wisdom Ambulance	Wisdom, MT	911			X			
Wise River Ambulance	Wise River, MT	911			X			
A-1 Ambulance	Butte, MT	911			X			
Marcus Daly Ambulance	1200 Westwood Dr., Hamilton, MT	911 or 406.363.2211	X					
Salmon EMTs	203 VanDreff St., Salmon, ID	911 or 208.940.2529			X			
4. Air Ambulance Services								
Name	Phone	Type of Aircraft & Capability						
Life Flight Network, Missoula & Butte MT	911 or 800.232.0911	ALS with Night Vision						
Air Idaho, Salmon, ID	911 or 800.247.4324	ALS with Night Vision						
Two Bear Air Rescue	406.758.5610	Night Vision and 600 lbs. hoist capability, FLIR						
5. Hospitals								
Name Complete Address	GPS Datum – WGS 84 N DD° MM.mmm' - Lat W DDD° MM.mmm' - Long		Travel Time from ICP		Phone	Helipad Yes / No		Level of Care Facility
	Lat:	Long:	Air	Gnd		Yes	No	
Barrett Hospital 600 Hwy 91 South Dillon, MT	Lat: N 45° 12.130'	Long: W 112° 38.789'	40 min	60 min	406.683.3000	X		Level 4 Trauma Center
Community Hospital 401 W. Pennsylvania St. Anaconda, MT	Lat: N 46° 07.9504'	Long: W 112° 57.4278'	35 min	2 Hrs	406.563.8585	X		Level 4 Trauma Center
St. James Healthcare 400 S. Clark Street Butte, MT	Lat: N 46° 00.5137'	Long: W 112° 32.7315'	30 min	100 min	406.723.2500	X		Level 3 Trauma Center
Marcus Daly Hospital 1200 Westwood Drive Hamilton, MT	Lat: N 46° 14.8771'	Long: W 114° 10.3346'	30 min	100 min	406.363.2211	X		Critical Access Hospital
St. Patrick's Hospital 500 W. Broadway St. Missoula, MT	Lat: N 46° 52.4331'	Long: W 113° 59.997'	50 min	2 Hrs	406.543.7271	X		Level 2 Trauma Center
Steele Memorial 203 N. Daisy St. Salmon, ID	Lat: N 44° 10.4028'	Long: W 113° 53.4952'	50 min	55 min	208.756.5655	X		Level 4 Trauma Center
Eastern Idaho Regional Medical Center & Burn 3100 Channing Way Idaho Falls, ID	Lat: N 43° 28.2878'	Long: W 111° 59.4900'	60 min	4 Hrs	208.529.6111	X		Level 2 Trauma Center
For line emergencies, follow Medical Incident Report procedure through Dillon Dispatch For after-hours emergency call 911 or contact Medical Unit personnel in farthest North tent								

INCIDENT SAFETY ANALYSIS 215A

Trail Creek/Alder -

8. Location	9. Hazard	6. Control or Abatement Action (Engineering, Administrative, PPE, Avoidance, Education, etc)
All Divisions	Hazard Trees	<ul style="list-style-type: none"> ~ Follow "Hazard Tree Safety" guidelines, IRPG page 22. ~ Post lookouts, or use a spotter in mop-up areas with personnel. ~ Don't park vehicles or take breaks in high concentrations of hazard trees. ~ Establish trigger points for disengagement during high wind events. ~ Remember that the hazard zone extends a minimum of 2 1/2 tree heights.
All Divisions and ICP	Driving & Traffic	<ul style="list-style-type: none"> ~ Practice "Defensive Driving" techniques traveling on all roads and city streets. ~ Use spotters when backing. ~ Honk horn to alert personnel when backing. ~ Keep clutter off dash and inside cab. ~ Follow Driving LCES (Lights, Chock blocks, Emergency brake, Seat belts. ~ Always use headlights. ~ Yield to pedestrians and bicycles. ~ Observe posted speed limits. ~ Use the 3 second rule for following distance when driving. ~ Use chock blocks, turn wheels into hill. ~ Avoid distractions (eating, cell phones, radio). ~ Ensure that windshields are kept clean of dust and bugs.
All Divisions	Heavy Equipment Operations	<ul style="list-style-type: none"> ~ Ensure communications are established with operators. ~ Use hand signals if other communications are unavailable. ~ Maintain a 50'-100' exclusion area around equipment and increase it to 1 1/2 times tree height when in timber. ~ Use a spotter when backing. ~ Avoid working below heavy equipment.
All Divisions	Chipping Operation	<ul style="list-style-type: none"> ~ Ensure proper use of all required PPE (gloves with no cuffs, close-fitting and tucked-in clothing, hard hat, eye and ear protection, etc.) ~ Designate one or more employees as a safety watch to be stationed near emergency shut-off devices while other employees feed material into the chipper. ~ Stand to the side of the infeed chute when feeding material into the chipper. This reduces the "caught-in" hazard and allows quick access to emergency stop devices. ~ Keep hands and feet out of the immediate infeed chute area while the chipper is running. ~ Push material into feed rollers with a wooden tool or a long branch. ~ Feed branches into the chipper butt-end first. ~ Place shorter branches on top of longer branches being fed into the chipper. ~ Never stand, sit or climb onto any part of the chipper while it is running. ~ Ensure that the discharge chute is positioned to prevent chips from hitting employees. ~ Do not stand in front of the feed table when the chipper is running.
All Divisions & ICP	COVID-19	<ul style="list-style-type: none"> ~ Adhere to local, Agency, and IMT guidance, policy and direction. ~ Practice social distancing where practical. ~ Wear masks in locations where social distancing cannot be achieved. These locations include, yurts, vehicles, briefings, and in community businesses. ~ Wash your hands frequently and thoroughly.

SAFETY MESSAGE

Incident: Trail Creek

Date: October 11, 2021

Day Shift

Leader's Intent:

The highest priority will be focused on minimizing risk to firefighters and the public, by continually using the risk management process.*

* IAP Incident Objectives pg.

A PROCEDURAL APPROACH TO SAFETY

We must take steps to reduce the risks associated with our actions. By using a set procedure each operational period, we can minimize exposure to hazards and better ensure our safety by taking the following steps:

Determine what the assignment is
Identify the hazards
Analyze the risks
Implement steps to ensure safety
Re-analyze the situation as it changes

Mitigate the Hazards*

High/Low Temperatures and Low/High Humidity – Drink plenty of water.

Hunting Season – Know where you are and keep a clear and concise communication flow.

Steep slopes/rolling debris – Use spotters and lookouts.

Vehicle travel to and from fire – buckle seatbelts, obey posted speed limits, use caution when driving on ice roads, turn on vehicle headlights. Drive defensively for existing conditions.

*Not an inclusive list

Safety is a matter of common sense. Use it and you will keep yourself and others out of trouble and get the job done safely. Safety is your responsibility!

Electronic Finance Procedures

Finance Hotline: 208-803-4797

Send documents to fire email identified on **your** Resource Order:

2021.aldercreek.finance@firenet.gov or 2021.trailcreek.finance@firenet.gov

In the subject line of email:

- Enter **TIME** Single Resources/Agency Crews/Equipment
- Enter **PROC** Contract Crews/Equipment/Cooperators

CTR/Shift Ticket Remarks Section - **Fire Name** and **Division** you are working in.

QR codes will automatically address your email.

Alder Creek Fire



Trail Creek Fire



Start 10/8 you may also turn in your time hard copy after briefing. There will no longer be a scanner in the Plans Yurt.

FINANCE DEMOB INFORMATION:

The finance demob process is being done remotely.

Call us directly if you need other assistance or have questions about the process

1. Complete the Virtual Demob Process (See DMOB for check-out form)
2. Email final signed CTR/Shift Ticket to the email addresses provided above.
 - a. Contractors and ADs must indicate ending travel time.
 - b. Include your email and phone numbers in remarks section.
3. Submit travel receipts or per diem information if applicable.
4. After submittal you are welcome to physically begin traveling home.
5. Finance will send you completed time sheet/invoice.
6. Review, sign, and email back to us as applicable (Contractors/AD).
7. Federal and Cooperator resources need not return their time sheets to us.

LEAVING WISDOM: (it's easy)



1. When am I demobing?

Your last work day is listed in the daily IAP, your demob is the following day. Questions about demob can be answered by visiting the demobunit's tent, or by email 2021.trailcreek.demob@firenet.gov

2. How do I demob?

On your last shift. Call Finance and ask them if they have all your required paperwork. Take the included DEMOB sheet and "Run the gauntlet" to Supply and Ground Support. Last stop on the gauntlet is in the DEMOB tent.

3. Complete the Remote Checkout process with the DEMOB specialist via the QR Code on the front of the IAP. NOTE: You are not demobed until you have completed these steps and submitted your remote checkout.

HELPFUL TIPS:

- **TURN IN YOUR TIME DAILY!** (This simple step will greatly simplify your demob)
- You can start your demob process the day before if you are leaving the next morning.
- If you came to this incident in an airplane and you haven't personally spoken with DEMOB, get it done sooner than later. Remember Demob needs 72 hours notice.
- Listen for any updates on demobing at the morning briefing.
- Above all: **Travel Home Safely**



Demob Checklist!

Check One:

	Trail Creek	MT-BDF-006272
	Alder Creek	MT-BDF-006269

Unit	Remarks	Name and Signature
What is your Resource Order Number:		
Finance	Call Finance at 208-803-4797 Before you start DeMob in Camp	
Ground Support	E-Mail Post Inspection Form to Finance!	
Supply		
Comm	Radio Check-In is now located at Demob Tent	
Demob		

Alder Creek QR Codes

Scan these map codes directly from the Avenza App.

Under My Maps use the + button and then the QR scanner 

Alder Ops Topo 1:24K



Alder Ops Imagery 1:24K



Alder Ops Overview



Alder/Trail
Transportation



Alder Air Ops



Alder Suppression
Repair



Alder Accountable
Property



Trail Creek QR Codes

Scan these map codes directly from the Avenza App.

Under My Maps use the + button and then the QR scanner 

Trail Ops Topo 1:24K



Trail Ops Imagery 1:24K



Trail Ops Overview



Alder/Trail
Transportation



Trail Air Ops

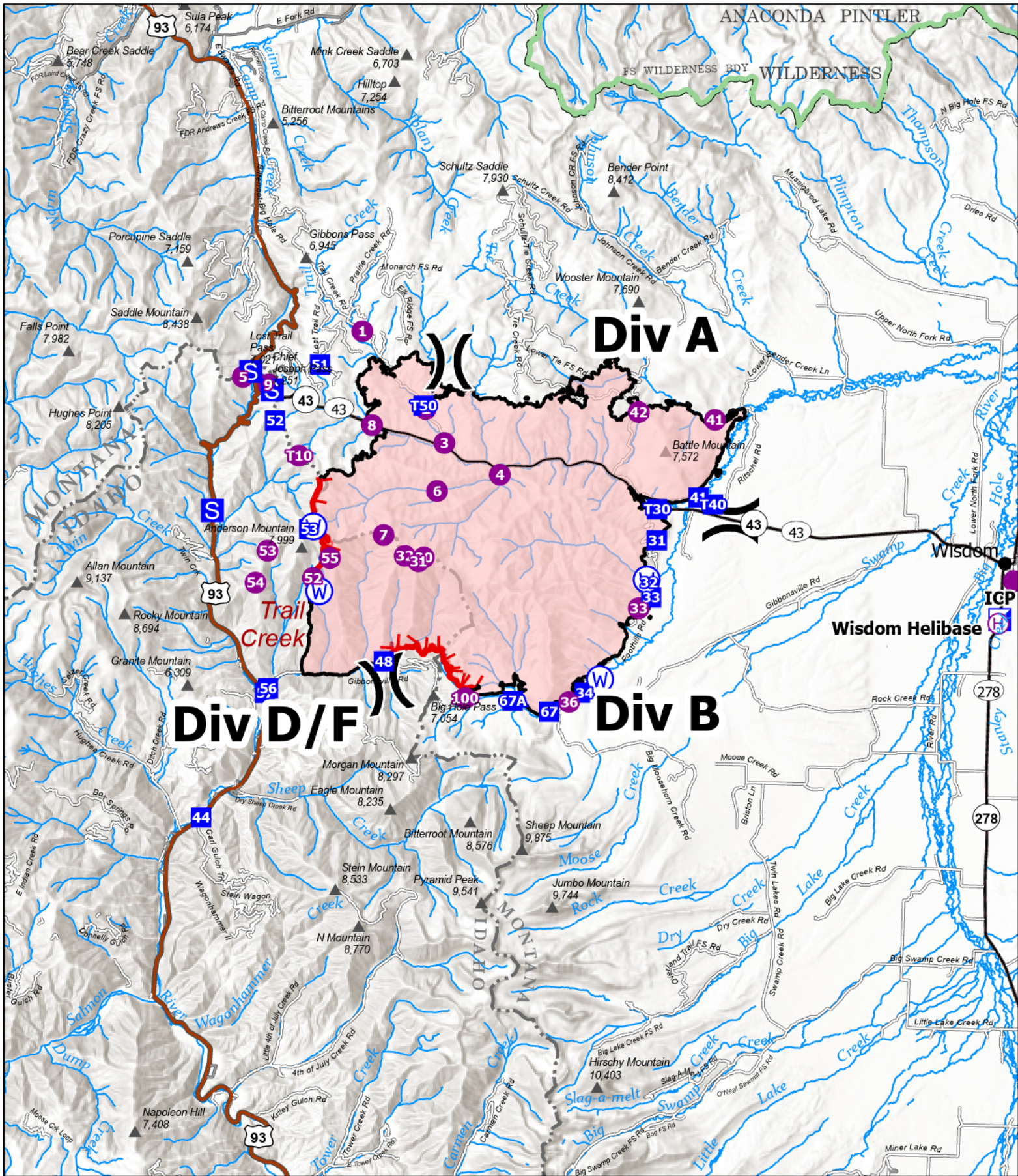


Trail Suppression Repair



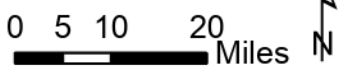
Trail Accountable Property





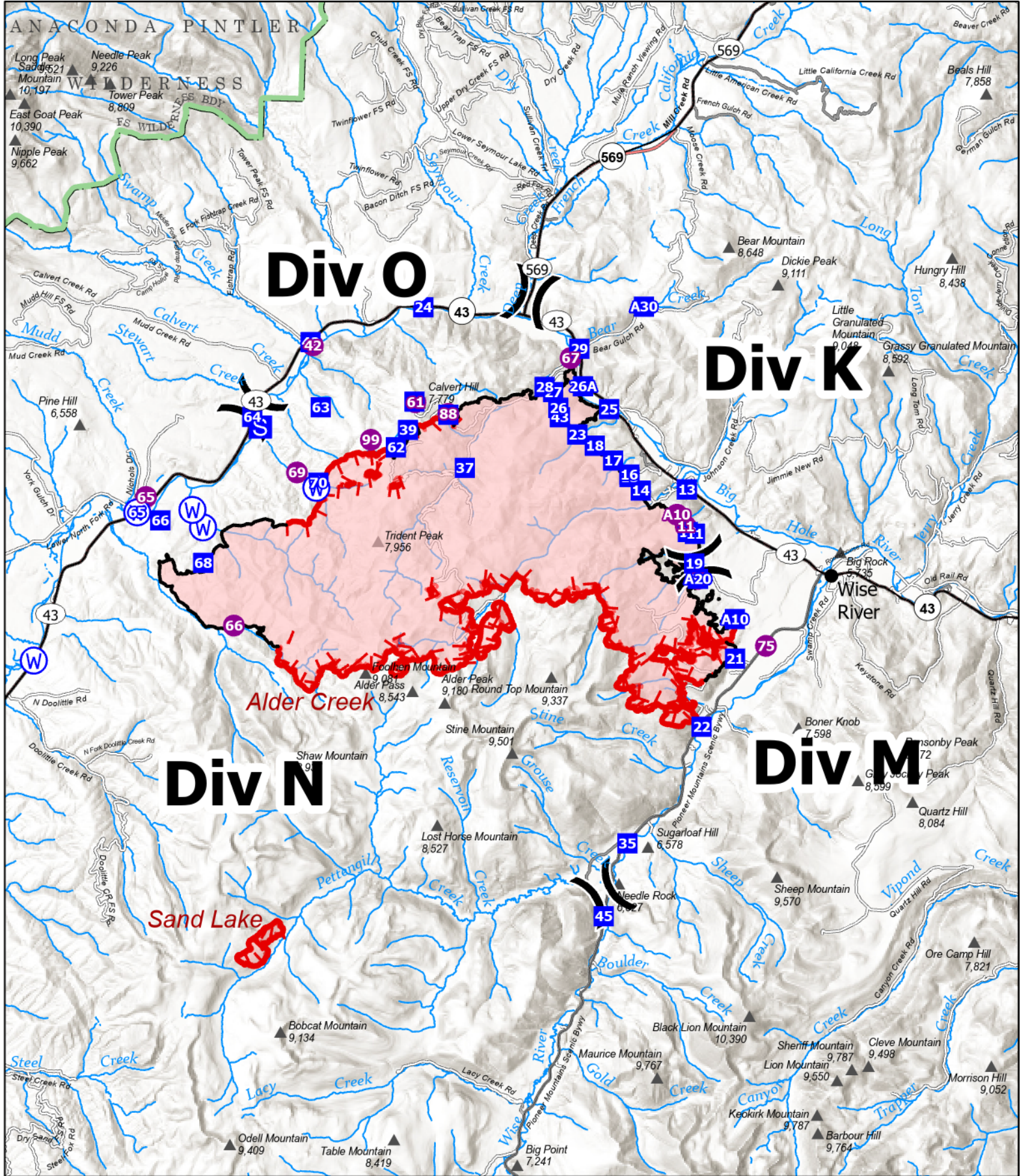
Trail Creek IAP
10/07/2021

Trail Creek MTBDF-006272
 62,013 Acres



- Helispot
- Ⓜ Helibase
-) Division Break
- ▣ Incident Command Post
- Drop Point
- Ⓜ Staging Area
- Ⓜ Water Source
- City
- ┌ Fire Edge
- Contained Line
- ┌ Wildfire Daily Fire Perimeter
- State Boundary
- Federal Wilderness Boundary





Div O

Div K

Div N

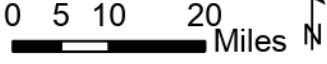
Div M

Alder Creek

Sand Lake

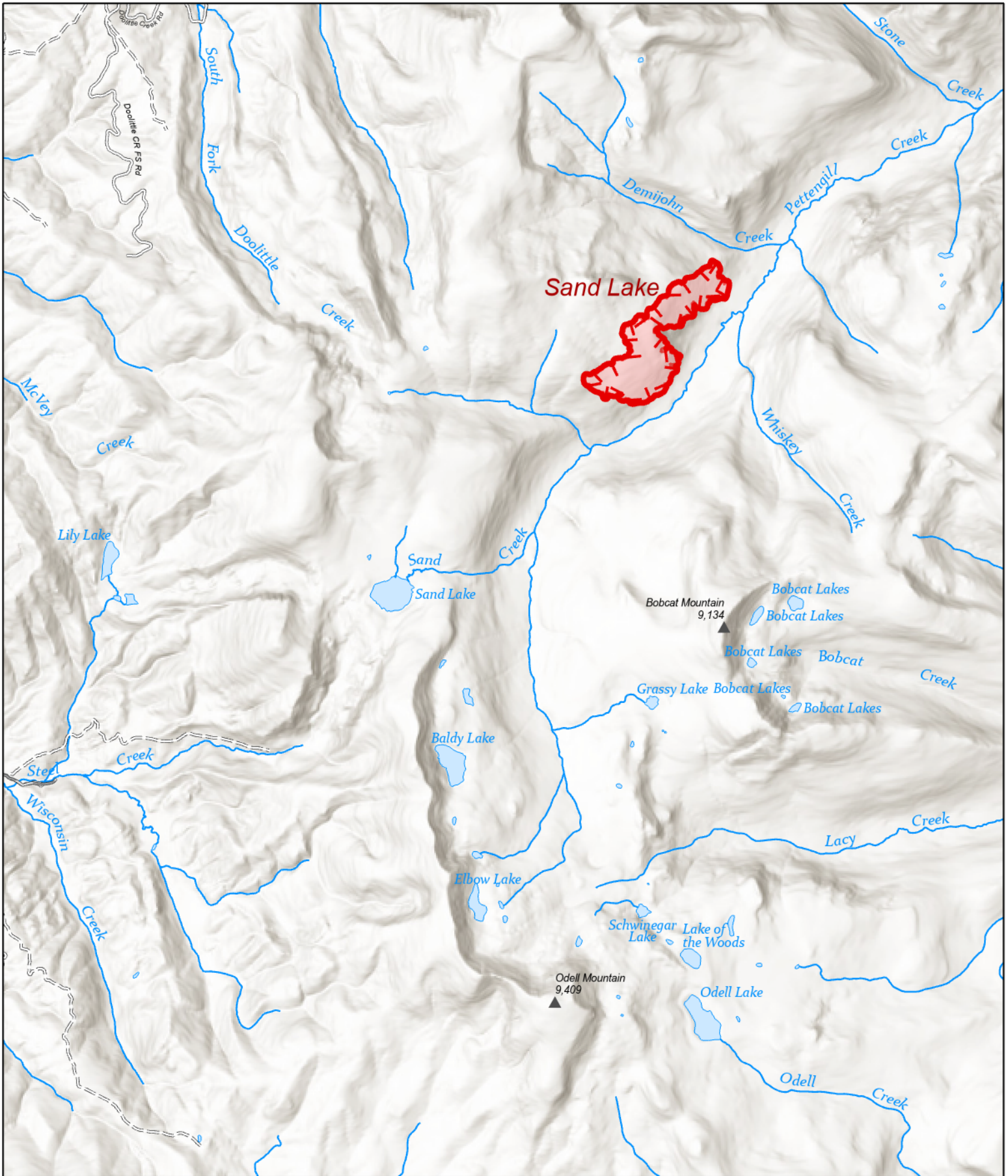
Alder Creek IAP
10/08/2021

Alder Creek MTBDF-006269
 36,968 Acres



- Helispot
- ⌋ Division Break
- Drop Point
- S Staging Area
- W Water Source
- City
- ┌ Fire Edge
- Contained Line
- Wildfire Daily Fire Perimeter
- State Boundary
- Federal Wilderness Boundary









Sand Lake IAP

10/08/2021

Sand Lake MTBDF-006306

228 Acres



-  Fire Edge
-  Wildfire Daily Fire Perimeter
-  State Boundary
-  Ranger District Boundary



1. MEDICAL EMERGENCY PROCEDURES

(NOTE: GREEN INCIDENTS DO NOT TRIGGER IWI)

LINE "MEDICAL-EMERGENCY" PLAN:

First on scene to contact Division Supervisor (if assigned to a division) or Operations (if not assigned to a division).

- Patient Complaint, Condition and Location via Tactical or Command frequency. **RED & YELLOW** Patients only.

Division Supervisor or POC* contacts **Operations**:

- Division Supervisor or POC* will run "**Medical-Emergency**" on the Command frequency.
- Division Supervisor or **POC*** to use "Medical Incident Report" (**8-Line**) included in this IAP or in IRPG.
- Division or POC confirms Operations is aware of IWI via radio and clears frequencies as needed.
- If medical emergency is **NOT** incident related, contact 911 and local dispatch center on appropriate repeater.
- Incident radio traffic will be monitored by the incident communications. After hour radio traffic will utilize local dispatch center for emergency communication needs.

*POC (Point of Contact)

ICP/ CAMP/ HELIBASE

24 HOUR MEDICAL-EMERGENCY PLAN

First on Scene to contact Plans Chief. If Plans Chief is not assigned or is unavailable, contact Safety Officer (SOF). If SOF are unavailable, identify POC* to run "Medical Emergency".

- Patient Complaint, Condition and Location via radio. **RED & YELLOW** Patients only.

Safety Officer, or POC* contacts Dillion Dispatch:

- Safety Officer, or POC* will run "**Medical Emergency**" on the Command frequency.
- Safety Officer, or POC* to use "Medical Incident Report" (**8-Line**) included in this IAP or in IRPG.
- **POC** confirms Incident Commander is aware of IWI and clears frequencies as needed.
- If medical emergency is **NOT** incident related, contact 911 and local dispatch center on appropriate repeater.
- Incident radio traffic will be monitored by the incident communications. After hour radio traffic will utilize local dispatch center for emergency communication needs.

*POC (Point of Contact)

2. ASSIGNMENT SPECIFIC – MEDICAL EMERGENCY INFORMATION

What are the likely hazards that could cause injuries? What kind of severe injuries?		
Who is the DIVS or likely POC for a medical emergency in your assigned area today?		
Who are the medical personnel in your work area today? What are their capabilities?		
Are there other (non-incident) emergency medical responders in your area? What is their contact info?		
Command Frequency Air-Ground Frequency Air Ambulance Frequency		
Transportation Methods Available	Ground Location Call Sign	
	Air Helispots Tail Number Short Haul?	
	Other Available Contingency	
Most likely resource for emergency medical evacuation?		

IWI Plan 2021	4. PREPARED BY: (Safety Officer)	5. REVIEWED BY: (Medical Unit Leader)	6. APPROVED BY: (Incident Commander)
-------------------------	----------------------------------	---------------------------------------	--------------------------------------

Medical Incident Report

FOR A NON-EMERGENCY INCIDENT, WORK THROUGH CHAIN OF COMMAND TO REPORT AND TRANSPORT INJURED PERSONNEL AS NECESSARY.

FOR A MEDICAL EMERGENCY: IDENTIFY ON SCENE INCIDENT COMMANDER BY NAME AND POSITION AND ANNOUNCE "MEDICAL EMERGENCY" TO INITIATE RESPONSE FROM IMT COMMUNICATIONS/DISPATCH.

Use the following items to communicate situation to communications/dispatch.

1. CONTACT COMMUNICATIONS / DISPATCH (Verify correct frequency prior to starting report)

Ex: "Communications, Div. Alpha. Stand-by for Emergency Traffic."

2. INCIDENT STATUS: Provide incident summary (including number of patients) and command structure.

Ex: "Communications, I have a Red priority patient, unconscious, struck by a falling tree. Requesting air ambulance to Forest Road 1 at (Lat./Long.) This will be the Trout Meadow Medical, IC is TFLD Jones. EMT Smith is providing medical care."

Severity of Emergency / Transport Priority	<input type="checkbox"/> RED / PRIORITY 1 Life or limb threatening injury or illness. Evacuation need is IMMEDIATE <i>Ex: Unconscious, difficulty breathing, bleeding severely, 2° – 3° burns more than 4 palm sizes, heat stroke, disoriented.</i> <input type="checkbox"/> YELLOW / PRIORITY 2 Serious Injury or illness. Evacuation may be DELAYED if necessary. <i>Ex: Significant trauma, unable to walk, 2° – 3° burns not more than 1-3 palm sizes.</i> <input type="checkbox"/> GREEN / PRIORITY 3 Minor Injury or illness. Non-Emergency transport <i>Ex: Sprains, strains, minor heat-related illness.</i>	
Nature of Injury or Illness & Mechanism of Injury		<i>Brief Summary of Injury or Illness (Ex: Unconscious, Struck by Falling Tree)</i>
Transport Request		<i>Air Ambulance / Short Haul/Hoist Ground Ambulance / Other</i>
Patient Location		<i>Descriptive Location & Lat. / Long. (WGS84)</i>
Incident Name		<i>Geographic Name + "Medical" (Ex: Trout Meadow Medical)</i>
On-Scene Incident Commander		<i>Name of on-scene IC of Incident within an Incident (Ex: TFLD Jones)</i>
Patient Care		<i>Name of Care Provider (Ex: EMT Smith)</i>

3. INITIAL PATIENT ASSESSMENT: Complete this section for each patient as applicable (start with the most severe patient)

Patient Assessment: See IRPG PAGE 106

Treatment:

4. TRANSPORT PLAN:

Evacuation Location (if different): (Descriptive Location (drop point, intersection, etc.) or Lat. / Long.) Patient's ETA to Evacuation Location:

Helispot / Extraction Site Size and Hazards:

5. ADDITIONAL RESOURCES / EQUIPMENT NEEDS:

Example: Paramedic/EMT, Crews, Immobilization Devices, AED, Oxygen, Trauma Bag, IV/Fluid(s), Splints, Rope rescue, Wheeled litter, HAZMAT, Extrication

6. COMMUNICATIONS: Identify State Air/Ground EMS Frequencies and Hospital Contacts as applicable

Function	Channel Name/Number	Receive (RX)	Tone/NAC *	Transmit (TX)	Tone/NAC *
COMMAND					
AIR-TO-GRND					
TACTICAL					

7. CONTINGENCY: Considerations: If primary options fail, what actions can be implemented in conjunction with primary evacuation method? Be thinking ahead.

8. ADDITIONAL INFORMATION: Updates/Changes, etc.

REMEMBER: Confirm ETA's of resources ordered. Act according to your level of training. Be Alert. Keep Calm. Think Clearly. Act Decisively.