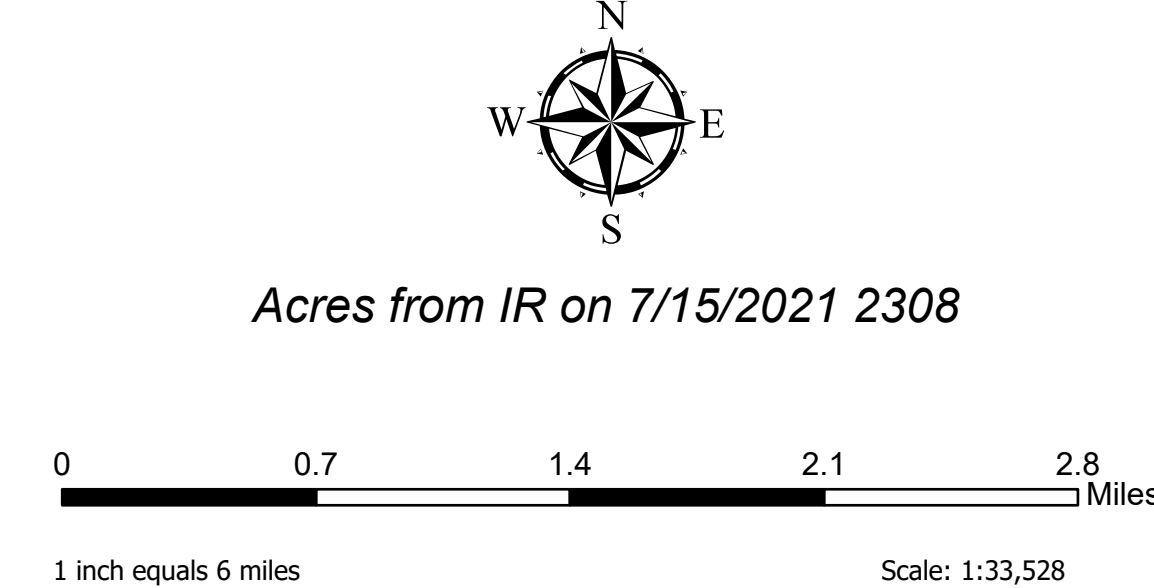


**Operations**  
 Alder Creek  
 MT-BDF-006269  
 July 16, 2021  
 3463 Acres



- |   |  |   |  |   |
|---|--|---|--|---|
| <ul style="list-style-type: none"> <li>Other</li> <li>Prescribed Fire</li> <li>Wildfire Daily Fire Perimeter</li> <li>Accountable Property</li> <li>Accountable Property</li> <li>Other Property</li> <li>Pump</li> </ul> | <ul style="list-style-type: none"> <li>Water Tank</li> <li>Event Point</li> <li>Air Operations</li> <li>Helispot</li> <li>Assignment Breaks</li> <li>Division Break</li> </ul> | <ul style="list-style-type: none"> <li>Branch Break</li> <li>Logistics</li> <li>Drop Point</li> <li>Operations</li> <li>Lookout</li> <li>Reference</li> <li>Gate</li> <li>Repair</li> <li>Landing or Log Deck</li> <li>Fence - Cut/Damaged</li> <li>Safety</li> <li>Hazard</li> <li>Completed Dozer Line</li> </ul> | <ul style="list-style-type: none"> <li>Completed Mixed Construction Line</li> <li>Completed Road as Line</li> <li>Planned Fuel Break</li> <li>Planned Road as Line</li> <li>Planned Secondary Line</li> <li>Other</li> <li>Route</li> <li>Temporary Flight Restriction</li> <li>Fire Edge</li> <li>Paved</li> <li>Gravel Road</li> <li>Dirt Road</li> <li>Unimproved Road</li> <li>Forest Service Land</li> <li>State Public Lands</li> <li>Other State Lands</li> </ul> | <ul style="list-style-type: none"> <li>Bureau of Land Management Lands</li> <li>Structures</li> <li>Fire History 2000 - Current</li> <li>Structures_Salmon_Challis</li> <li>Area Closure</li> </ul> |
|---|--|---|--|---|



Remote Incident Support Team  
 7/16/2021 0724  
 North American 1983 Datum, Lat/Long Grid

Operations