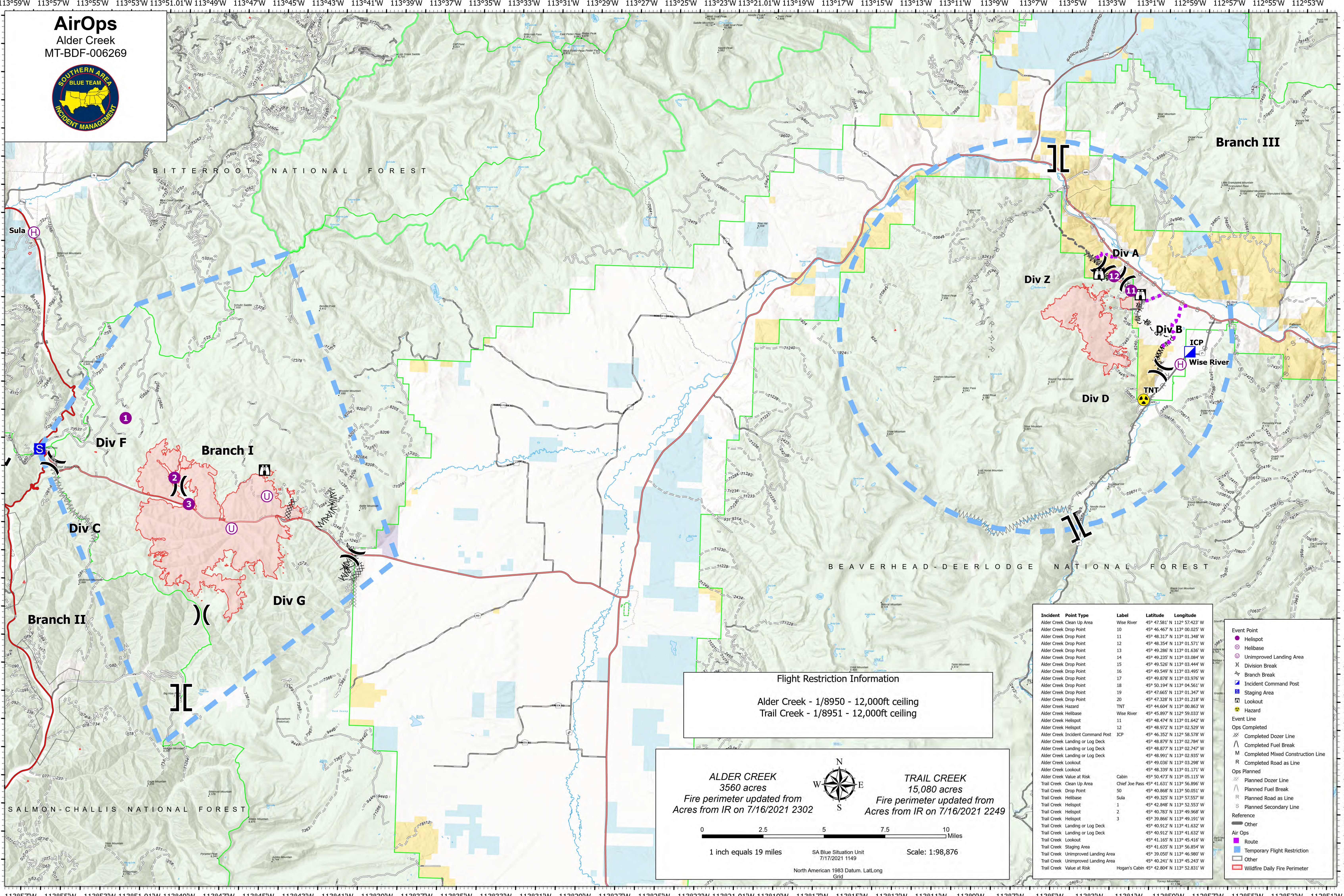


AirOps
Alder Creek
MT-BDF-006269



Flight Restriction Information
Alder Creek - 1/8950 - 12,000ft ceiling
Trail Creek - 1/8951 - 12,000ft ceiling

ALDER CREEK
3560 acres
Fire perimeter updated from
Acres from IR on 7/16/2021 2302

TRAIL CREEK
15,080 acres
Fire perimeter updated from
Acres from IR on 7/16/2021 2249

1 inch equals 19 miles SA Blue Situation Unit 7/17/2021 1149 Scale: 1:98,876

North American 1983 Datum. Lat/Long Grid

Incident Point Type	Label	Latitude	Longitude
Alder Creek Clean Up Area	Wise River	45° 47.581' N	112° 57.423' W
Alder Creek Drop Point	10	45° 46.467' N	113° 00.025' W
Alder Creek Drop Point	11	45° 48.317' N	113° 01.348' W
Alder Creek Drop Point	12	45° 48.354' N	113° 01.571' W
Alder Creek Drop Point	13	45° 49.286' N	113° 01.636' W
Alder Creek Drop Point	14	45° 49.235' N	113° 03.084' W
Alder Creek Drop Point	15	45° 49.526' N	113° 03.444' W
Alder Creek Drop Point	16	45° 49.549' N	113° 03.495' W
Alder Creek Drop Point	17	45° 49.878' N	113° 03.976' W
Alder Creek Drop Point	18	45° 50.194' N	113° 04.561' W
Alder Creek Drop Point	19	45° 47.665' N	113° 01.347' W
Alder Creek Drop Point	20	45° 47.328' N	113° 01.218' W
Alder Creek Hazard	TNT	45° 44.604' N	113° 00.863' W
Alder Creek Helibase	Wise River	45° 45.897' N	112° 59.033' W
Alder Creek Helispot	11	45° 48.474' N	113° 01.642' W
Alder Creek Helispot	12	45° 48.972' N	113° 02.529' W
Alder Creek Incident Command Post	ICP	45° 46.352' N	113° 58.578' W
Alder Creek Landing or Log Deck		45° 48.879' N	113° 02.747' W
Alder Creek Landing or Log Deck		45° 48.911' N	113° 02.935' W
Alder Creek Lookout		45° 49.036' N	113° 03.298' W
Alder Creek Lookout		45° 48.339' N	113° 01.171' W
Alder Creek Value at Risk	Cabin	45° 50.473' N	113° 05.115' W
Trail Creek Clean Up Area	Chief Joe Pass	45° 41.631' N	113° 56.896' W
Trail Creek Drop Point	50	45° 40.868' N	113° 50.051' W
Trail Creek Helibase	Sula	45° 49.325' N	113° 57.557' W
Trail Creek Helispot	1	45° 42.848' N	113° 52.553' W
Trail Creek Helispot	2	45° 40.783' N	113° 49.968' W
Trail Creek Helispot	3	45° 39.866' N	113° 49.191' W
Trail Creek Landing or Log Deck		45° 40.912' N	113° 41.632' W
Trail Creek Landing or Log Deck		45° 41.165' N	113° 45.416' W
Trail Creek Lookout		45° 41.635' N	113° 56.854' W
Trail Creek Staging Area		45° 39.500' N	113° 46.980' W
Trail Creek Unimproved Landing Area		45° 40.241' N	113° 45.243' W
Trail Creek Value at Risk	Hogan's Cabin	45° 42.804' N	113° 52.831' W

- Event Point**
- Helispot
 - Helibase
 - Unimproved Landing Area
 - ⌘ Division Break
 - ⌘ Branch Break
 - ⌘ Incident Command Post
 - ⌘ Staging Area
 - ⌘ Lookout
 - ⌘ Hazard
- Event Line**
- ⌘ Ops Completed
 - ⌘ Completed Dozer Line
 - ⌘ Completed Fuel Break
 - ⌘ Completed Mixed Construction Line
 - ⌘ Completed Road as Line
 - ⌘ Ops Planned
 - ⌘ Planned Dozer Line
 - ⌘ Planned Fuel Break
 - ⌘ Planned Road as Line
 - ⌘ Planned Secondary Line
- Reference**
- ⌘ Other
 - ⌘ Air Ops
 - ⌘ Route
 - ⌘ Temporary Flight Restriction
 - ⌘ Other
 - ⌘ Wildfire Daily Fire Perimeter