

Transportation

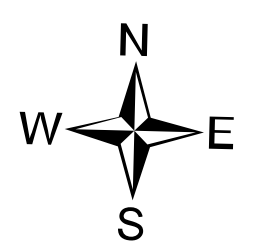
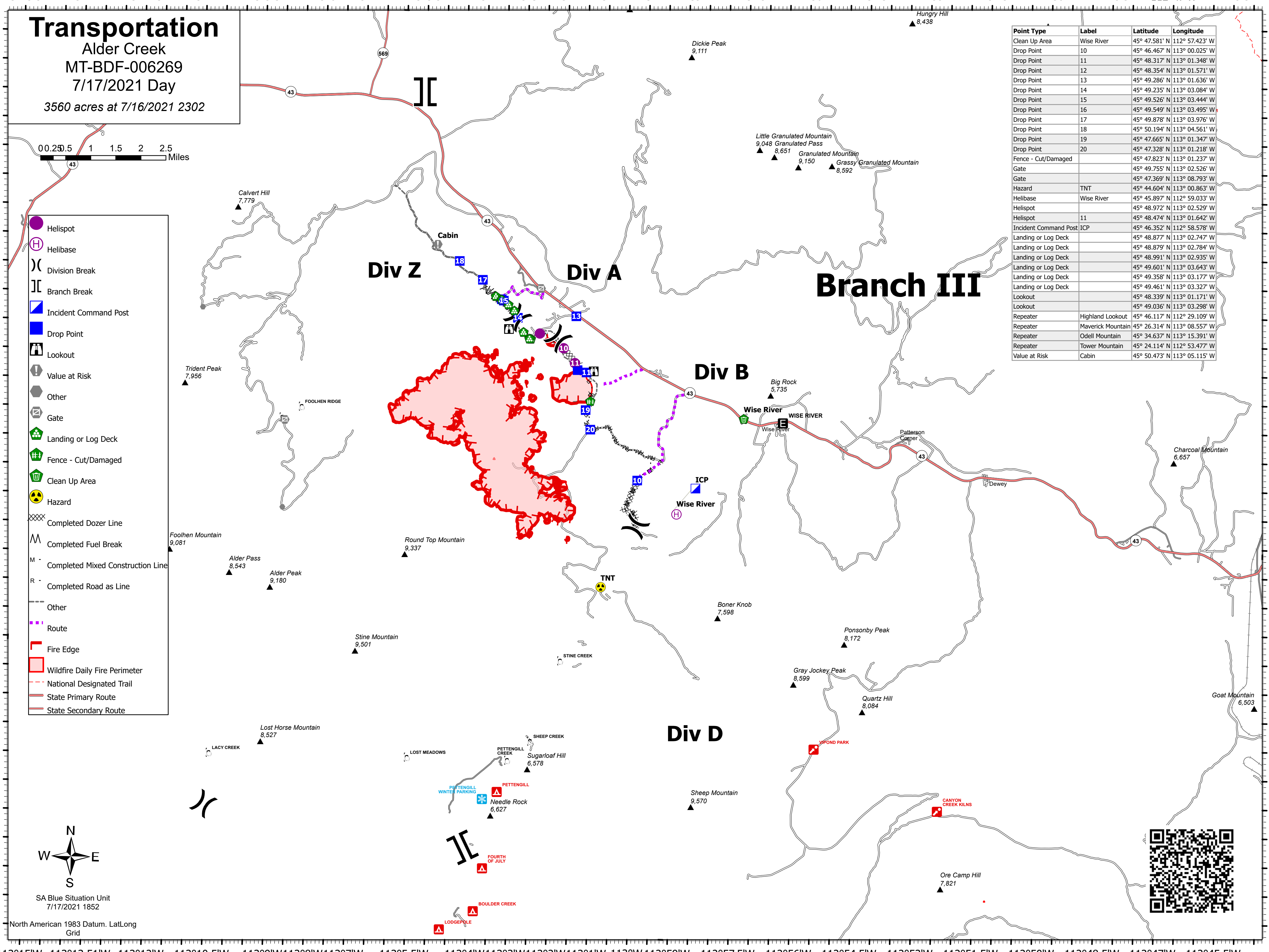
Alder Creek
MT-BDF-006269
7/17/2021 Day

3560 acres at 7/16/2021 2302

0 0.5 1 1.5 2 2.5 Miles

- Helispot
- Helibase
- Division Break
- Branch Break
- Incident Command Post
- Drop Point
- Lookout
- Value at Risk
- Other
- Gate
- Landing or Log Deck
- Fence - Cut/Damaged
- Clean Up Area
- Hazard
- Completed Dozer Line
- Completed Fuel Break
- Completed Mixed Construction Line
- Completed Road as Line
- Other
- Route
- Fire Edge
- Wildfire Daily Fire Perimeter
- National Designated Trail
- State Primary Route
- State Secondary Route

Point Type	Label	Latitude	Longitude
Clean Up Area	Wise River	45° 47.581' N	112° 57.423' W
Drop Point	10	45° 46.467' N	113° 00.025' W
Drop Point	11	45° 48.317' N	113° 01.348' W
Drop Point	12	45° 48.354' N	113° 01.571' W
Drop Point	13	45° 49.286' N	113° 01.636' W
Drop Point	14	45° 49.235' N	113° 03.084' W
Drop Point	15	45° 49.526' N	113° 03.444' W
Drop Point	16	45° 49.549' N	113° 03.495' W
Drop Point	17	45° 49.878' N	113° 03.976' W
Drop Point	18	45° 50.194' N	113° 04.561' W
Drop Point	19	45° 47.665' N	113° 01.347' W
Drop Point	20	45° 47.328' N	113° 01.218' W
Fence - Cut/Damaged		45° 47.823' N	113° 01.237' W
Gate		45° 49.755' N	113° 02.526' W
Gate		45° 47.369' N	113° 08.793' W
Hazard	TNT	45° 44.604' N	113° 00.863' W
Helibase	Wise River	45° 45.897' N	112° 59.033' W
Helispot		45° 48.972' N	113° 02.529' W
Helispot	11	45° 48.474' N	113° 01.642' W
Incident Command Post	ICP	45° 46.352' N	112° 58.578' W
Landing or Log Deck		45° 48.877' N	113° 02.747' W
Landing or Log Deck		45° 48.879' N	113° 02.784' W
Landing or Log Deck		45° 48.991' N	113° 02.935' W
Landing or Log Deck		45° 49.601' N	113° 03.643' W
Landing or Log Deck		45° 49.358' N	113° 03.177' W
Landing or Log Deck		45° 49.461' N	113° 03.327' W
Lookout		45° 48.339' N	113° 01.171' W
Lookout		45° 49.036' N	113° 03.298' W
Repeater	Highland Lookout	45° 46.117' N	112° 29.109' W
Repeater	Maverick Mountain	45° 26.314' N	113° 08.557' W
Repeater	Odell Mountain	45° 34.637' N	113° 15.391' W
Repeater	Tower Mountain	45° 24.114' N	112° 53.477' W
Value at Risk	Cabin	45° 50.473' N	113° 05.115' W



SA Blue Situation Unit
7/17/2021 1852
North American 1983 Datum. LatLong
Grid