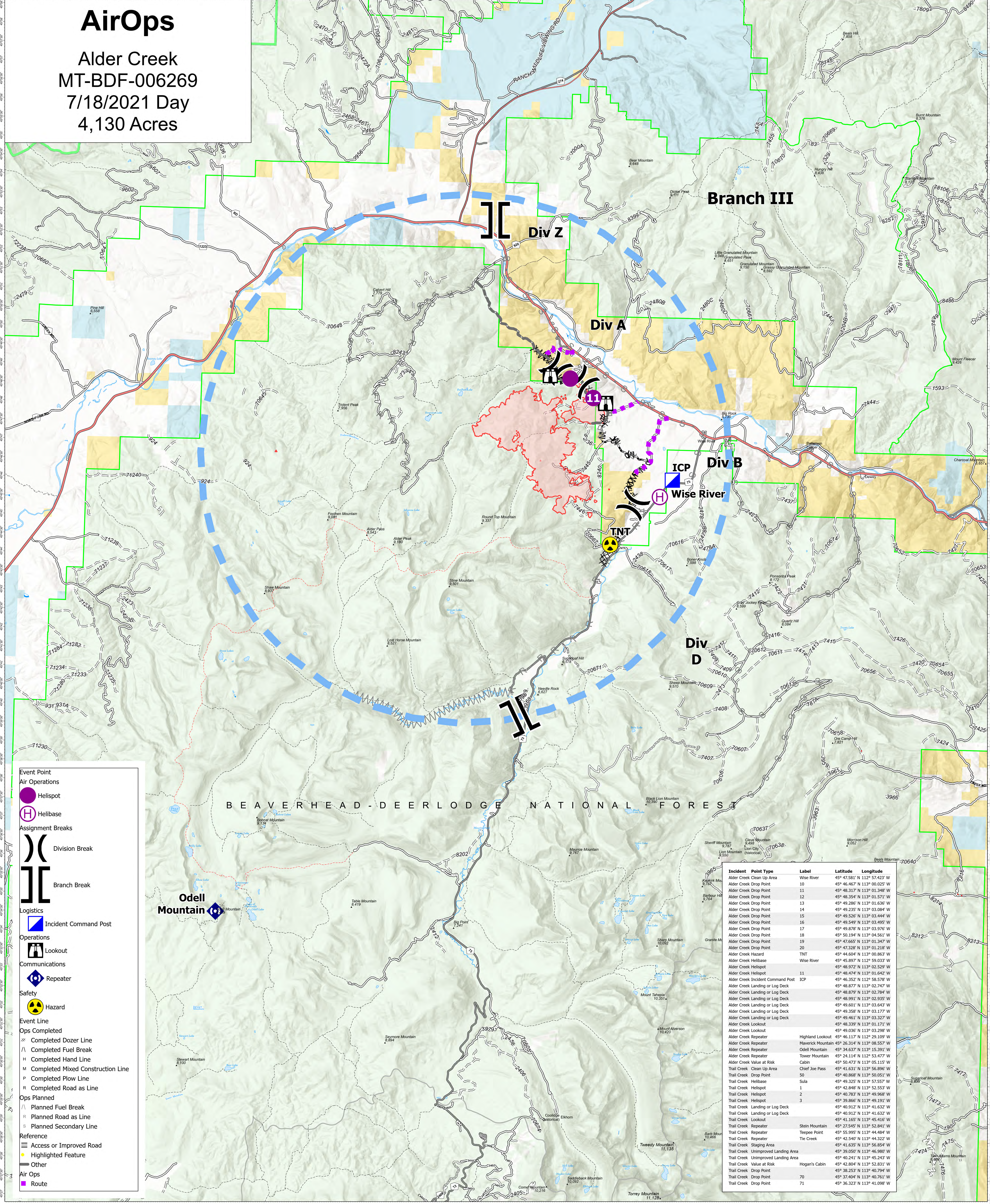


# AirOps

Alder Creek  
MT-BDF-006269  
7/18/2021 Day  
4,130 Acres



- Event Point**
- Air Operations**
- Helispot
- Helibase
- Assignment Breaks**
- Division Break
- Branch Break
- Logistics**
- Incident Command Post
- Operations**
- Lookout
- Communications**
- Repeater
- Safety**
- Hazard
- Event Line**
- Ops Completed**
- Completed Dozer Line
- Completed Fuel Break
- Completed Hand Line
- Completed Mixed Construction Line
- Completed Plow Line
- Completed Road as Line
- Ops Planned**
- Planned Fuel Break
- Planned Road as Line
- Planned Secondary Line
- Reference**
- Access or Improved Road
- Highlighted Feature
- Other
- Ops**
- Route

Incident Point Type	Label	Latitude	Longitude
Alder Creek Clean Up Area	Wise River	45° 47.581' N	112° 57.423' W
Alder Creek Drop Point	10	45° 46.467' N	113° 00.025' W
Alder Creek Drop Point	11	45° 48.317' N	113° 01.348' W
Alder Creek Drop Point	12	45° 48.354' N	113° 01.571' W
Alder Creek Drop Point	13	45° 49.286' N	113° 01.636' W
Alder Creek Drop Point	14	45° 49.232' N	113° 03.054' W
Alder Creek Drop Point	15	45° 49.526' N	113° 03.444' W
Alder Creek Drop Point	16	45° 49.549' N	113° 03.495' W
Alder Creek Drop Point	17	45° 49.878' N	113° 03.976' W
Alder Creek Drop Point	18	45° 50.194' N	113° 04.561' W
Alder Creek Drop Point	19	45° 47.665' N	113° 01.347' W
Alder Creek Drop Point	20	45° 49.328' N	113° 01.218' W
Alder Creek Hazard	TNT	45° 44.604' N	113° 00.865' W
Alder Creek Helibase	Wise River	45° 45.897' N	112° 59.033' W
Alder Creek Helispot		45° 48.972' N	113° 02.529' W
Alder Creek Helispot	11	45° 48.474' N	113° 01.642' W
Alder Creek Incident Command Post	ICP	45° 46.352' N	112° 58.578' W
Alder Creek Landing or Log Deck		45° 46.877' N	113° 02.747' W
Alder Creek Landing or Log Deck		45° 48.879' N	113° 02.784' W
Alder Creek Landing or Log Deck		45° 48.991' N	113° 02.935' W
Alder Creek Landing or Log Deck		45° 49.601' N	113° 03.647' W
Alder Creek Landing or Log Deck		45° 49.358' N	113° 03.177' W
Alder Creek Landing or Log Deck		45° 49.461' N	113° 03.327' W
Alder Creek Lookout		45° 48.339' N	113° 01.171' W
Alder Creek Lookout		45° 49.032' N	113° 03.298' W
Alder Creek Repeater	Highland Lookout	45° 46.117' N	112° 29.109' W
Alder Creek Repeater	Maverick Mountain	45° 26.314' N	113° 08.557' W
Alder Creek Repeater	Odell Mountain	45° 34.637' N	113° 15.391' W
Alder Creek Repeater	Tower Mountain	45° 24.114' N	112° 53.477' W
Alder Creek Value at Risk	Cabin	45° 50.473' N	113° 05.115' W
Trail Creek Clean Up Area	Chief Joe Pass	45° 41.631' N	113° 56.986' W
Trail Creek Drop Point	50	45° 40.868' N	113° 50.051' W
Trail Creek Helibase	Sula	45° 49.325' N	113° 57.557' W
Trail Creek Helispot	1	45° 42.848' N	113° 52.553' W
Trail Creek Helispot	2	45° 40.783' N	113° 49.968' W
Trail Creek Helispot	3	45° 39.866' N	113° 49.191' W
Trail Creek Landing or Log Deck		45° 40.912' N	113° 41.632' W
Trail Creek Landing or Log Deck		45° 40.912' N	113° 41.632' W
Trail Creek Lookout		45° 41.165' N	113° 45.416' W
Trail Creek Repeater	Stein Mountain	45° 27.545' N	113° 52.841' W
Trail Creek Repeater	Tespee Point	45° 55.995' N	113° 44.484' W
Trail Creek Repeater	Tie Creek	45° 42.540' N	113° 44.322' W
Trail Creek Staging Area		45° 41.635' N	113° 56.854' W
Trail Creek Unimproved Landing Area		45° 39.055' N	113° 46.989' W
Trail Creek Value at Risk	Hogan's Cabin	45° 42.804' N	113° 52.831' W
Trail Creek Drop Point	70	45° 38.253' N	113° 40.794' W
Trail Creek Drop Point	71	45° 37.404' N	113° 40.761' W
Trail Creek Drop Point		45° 36.323' N	113° 41.098' W

BEAVERHEAD-DEERLODGE NATIONAL FOREST

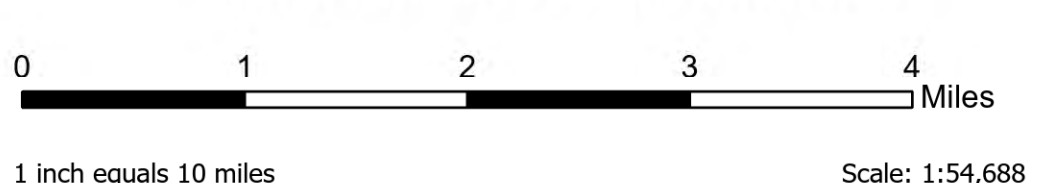
Odell Mountain

### Flight Restriction Information

Alder Creek - 1/8950 - 12,000ft ceiling  
Trail Creek - 1/8951 - 12,000ft ceiling



Fire perimeter updated from Acres from IR on 7/17/2021 2302



SA Blue Team  
7/18/2021 0938  
North American 1983 Datum. LatLong Grid