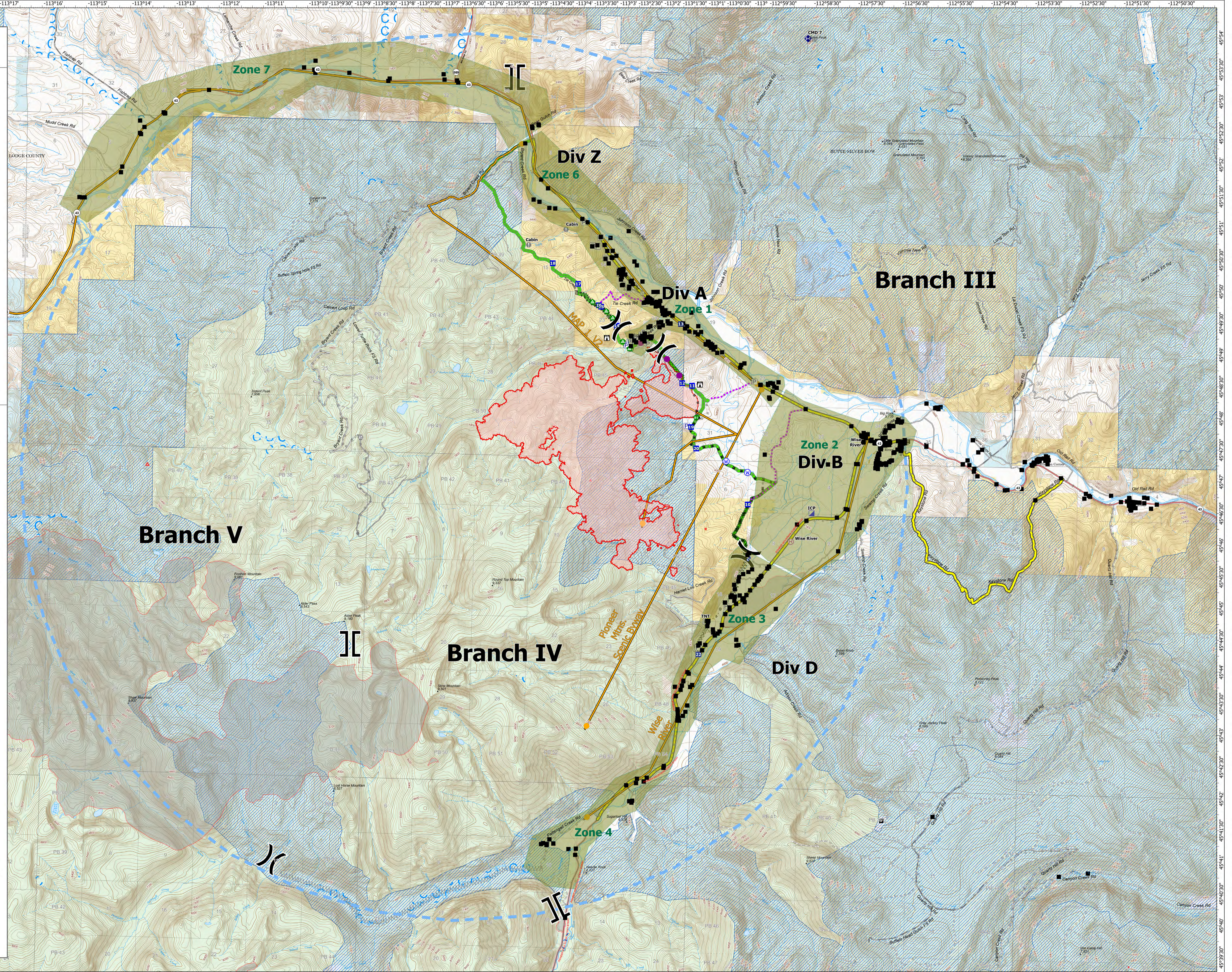


PACE

Ipsum Lorem Ipsum Lorem Ipsum Lorem Ipsum Lorem

MAPS

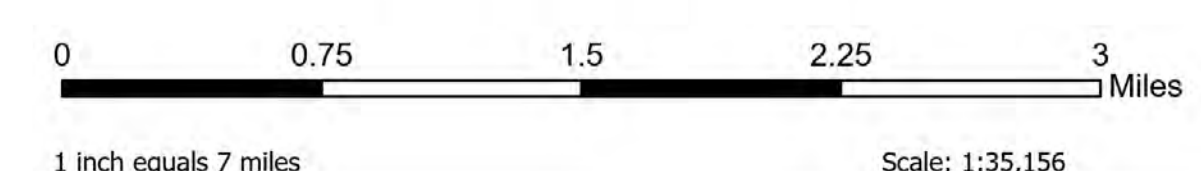
- MAP 6**
 - Performing a re-evaluation of the Organizational Needs Assessment;
 - Amending and expanding area/road/trail closures;
 - Scout & identify additional contingency lines;
 - Engagement with the Beaverhead County Sheriff's Office re: implementation of an Evacuation Plan;
 - Ensure good cooperation with impacted partners, homeowners, & land/home owners in/around the vicinity of Wise River, MT;
 - Continued communication and coordination with any potentially affected permittees;
 - Coordination with Montana Dept. of Transportation (MT DOT) & Montana Highway Patrol (MT MHP) re: potential flaggers or closure(s) on Hwy 43;
 - Coordination with Deer Lodge County & Silver Bow Counties, including respective Sheriffs, Commissioners, & Dept of Emergency Services (DES);
 - Coordinate with Montana Fish, Wildlife;
- MAP 7**
 - Performing a re-evaluation of the Organizational Needs Assessment, complexity analysis;
 - Recommend formal closure of the the Pioneer Scenic Byway;
 - Coordinate with Wise River Volunteer Fire Dept. (VFD) for structure assessments;
 - Adjust USFS & BLM access closures;
 - Explore relocating the current ICP.
- MAP 1**
 - Performing a re-evaluation of the Organizational Needs Assessment;
 - Amending and expanding area/road/trail closures;
 - Scout & identify additional contingency lines;
 - Engagement with the Beaverhead County Sheriff's Office re: implementation of an Evacuation Plan;
 - Ensure good cooperation with impacted partners, homeowners, & land/home owners in/around the vicinity of Wise River, MT
 - Continued communication and coordination with any potentially affected permittees;
 - Coordination with MT DOT & MT MPH re: potential flaggers or closure(s) on Hwy 43.



PACE

Alder Creek
MT-BDF-006269
7/19/2021 Day
4,130 Acres

Acres from IR on 7/17/2021 2302



Event Point <ul style="list-style-type: none">Air OperationsHelispotHelibaseAssignment BreaksDivision Break	Logistics <ul style="list-style-type: none">Incident Command PostDrop PointLookout	Repair <ul style="list-style-type: none">Landing or Log DeckFence - Cut/DamagedClean Up Area	Communications <ul style="list-style-type: none">Repeater	Reference <ul style="list-style-type: none">Value at RiskOtherGate	Water <ul style="list-style-type: none">Water Source	Event Line <ul style="list-style-type: none">Ops CompletedCompleted Dozer LineCompleted Fuel BreakCompleted Hand Line	Ops Planned <ul style="list-style-type: none">Planned Fuel BreakPlanned Road as LinePlanned Secondary LineAccess or Improved RoadHighlighted Feature	Other <ul style="list-style-type: none">Completed Mixed Construction LineCompleted Road as LineCompleted Plow LineCompleted Road as LineOtherAir OpsRouteTemporary Flight RestrictionFire PerimeterPavedGravel RoadDirt RoadUnimproved Road	Forest Service Land <ul style="list-style-type: none">Forest Service Roads ClosedForest Service LandState Public LandsOther State LandsBureau of Land Management Lands PACE_IVIAllotmentGrazing AllotmentActive AllotmentVacant Allotment	Structures <ul style="list-style-type: none">Management Action Points-AlderManagement Action Points-TrailInteragencyFirePerimeterHistoryManagement Action Points-TrailPrimaryAlternate<all other values>Evacuation Zone
--	---	---	--	---	---	---	---	--	--	---

