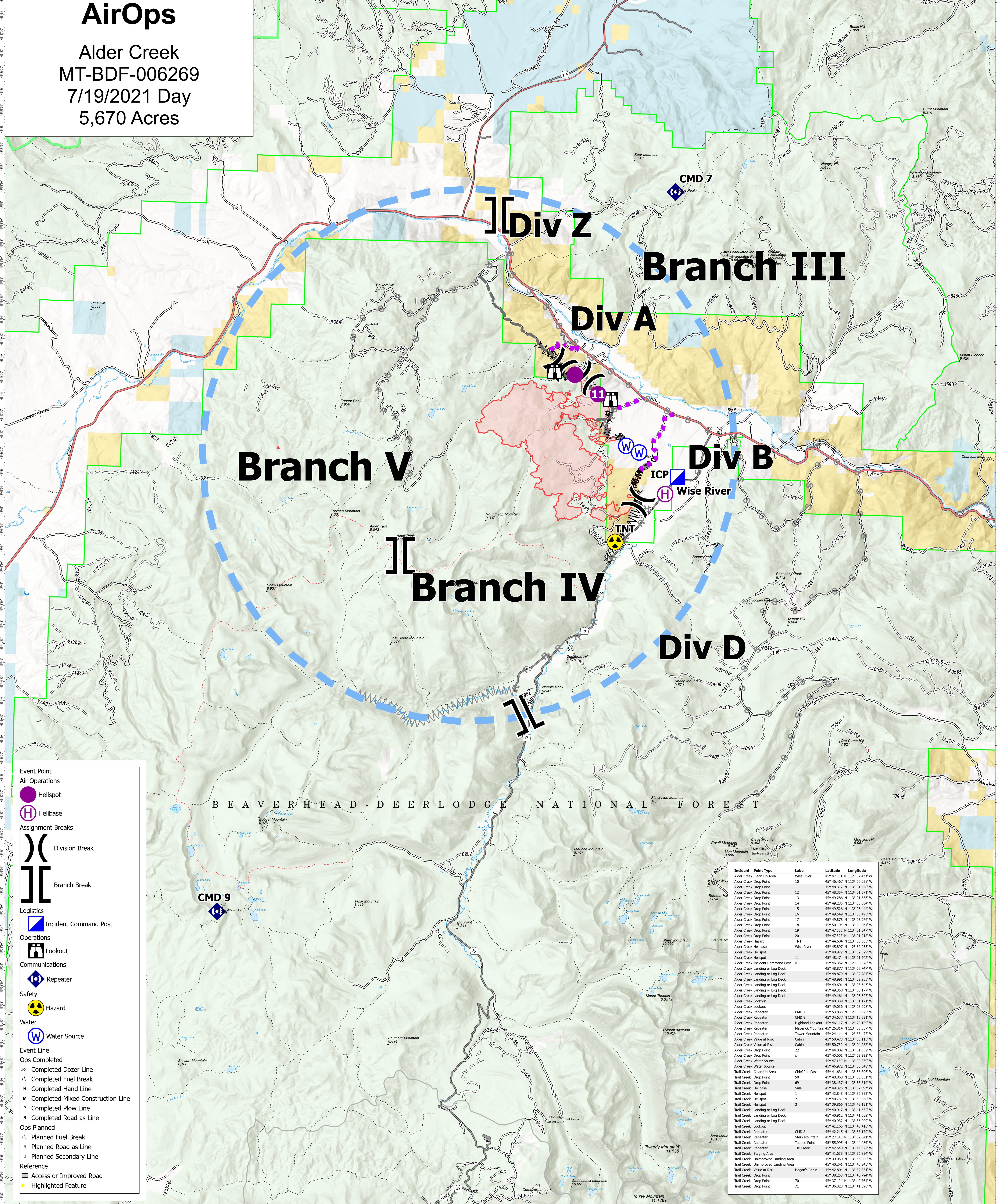


AirOps

Alder Creek
MT-BDF-006269
7/19/2021 Day
5,670 Acres



BEAVERHEAD-DEERLODGE NATIONAL FOREST

- Event Point**
- Air Operations**
- Helispot
- Helibase
- Assignment Breaks**
- Division Break
- Branch Break
- Logistics**
- Incident Command Post
- Operations**
- Lookout
- Communications**
- Repeater
- Safety**
- Hazard
- Water**
- Water Source
- Event Line**
- Ops Completed Dozer Line
- Completed Fuel Break
- Completed Hand Line
- Completed Mixed Construction Line
- Completed Plow Line
- Completed Road as Line
- Ops Planned**
- Planned Fuel Break
- Planned Road as Line
- Planned Secondary Line
- Reference**
- Access or Improved Road
- Highlighted Feature

Incident Point Type	Label	Latitude	Longitude
Alder Creek Clean Up Area	10	45° 47.581' N 112° 57.423' W	
Alder Creek Drop Point	11	45° 46.447' N 113° 00.025' W	
Alder Creek Drop Point	12	45° 46.317' N 113° 01.348' W	
Alder Creek Drop Point	13	45° 48.354' N 113° 01.571' W	
Alder Creek Drop Point	14	45° 49.286' N 113° 01.636' W	
Alder Creek Drop Point	15	45° 49.235' N 113° 03.084' W	
Alder Creek Drop Point	16	45° 49.526' N 113° 03.644' W	
Alder Creek Drop Point	17	45° 49.549' N 113° 03.495' W	
Alder Creek Drop Point	18	45° 49.878' N 113° 03.976' W	
Alder Creek Drop Point	19	45° 50.394' N 113° 04.541' W	
Alder Creek Drop Point	20	45° 47.328' N 113° 01.218' W	
Alder Creek Hazard	TNT	45° 44.604' N 113° 00.863' W	
Alder Creek Helibase	Wise River	45° 45.897' N 112° 59.033' W	
Alder Creek Helispot		45° 48.972' N 113° 02.529' W	
Alder Creek Helispot		45° 48.474' N 113° 01.642' W	
Alder Creek Incident Command Post	ICP	45° 46.352' N 112° 58.578' W	
Alder Creek Landing or Log Deck		45° 46.802' N 113° 02.747' W	
Alder Creek Landing or Log Deck		45° 48.879' N 113° 02.784' W	
Alder Creek Landing or Log Deck		45° 48.991' N 113° 02.935' W	
Alder Creek Landing or Log Deck		45° 49.037' N 113° 03.643' W	
Alder Creek Landing or Log Deck		45° 49.358' N 113° 03.177' W	
Alder Creek Landing or Log Deck		45° 49.461' N 113° 03.327' W	
Alder Creek Lookout		45° 48.359' N 113° 01.171' W	
Alder Creek Lookout		45° 49.286' N 113° 03.208' W	
Alder Creek Repeater	CMD 7	45° 53.835' N 112° 58.923' W	
Alder Creek Repeater	CMD 9	45° 34.637' N 113° 15.391' W	
Alder Creek Repeater	Highland Lookout	45° 46.137' N 112° 58.099' W	
Alder Creek Repeater	Neverick Mountain	45° 26.341' N 113° 08.557' W	
Alder Creek Repeater	Tower Mountain	45° 24.114' N 112° 53.477' W	
Alder Creek Value at Risk	Cabin	45° 50.473' N 113° 05.115' W	
Alder Creek Value at Risk	Cabin	45° 50.232' N 113° 04.382' W	
Alder Creek Drop Point	22	45° 44.082' N 113° 01.052' W	
Alder Creek Drop Point	c	45° 45.601' N 112° 59.992' W	
Alder Creek Water Source		45° 47.139' N 113° 03.539' W	
Alder Creek Water Source		45° 46.902' N 113° 00.948' W	
Trail Creek Clean Up Area	Chief Joe Pass	45° 41.631' N 113° 56.896' W	
Trail Creek Drop Point	50	45° 40.868' N 113° 50.051' W	
Trail Creek Drop Point	60	45° 40.763' N 113° 49.968' W	
Trail Creek Helibase	Sula	45° 49.325' N 113° 57.557' W	
Trail Creek Helispot	1	45° 42.848' N 113° 52.553' W	
Trail Creek Helispot	2	45° 40.763' N 113° 49.968' W	
Trail Creek Helispot	3	45° 39.866' N 113° 48.931' W	
Trail Creek Landing or Log Deck		45° 40.912' N 113° 41.632' W	
Trail Creek Landing or Log Deck		45° 40.912' N 113° 41.632' W	
Trail Creek Landing or Log Deck		45° 40.912' N 113° 56.099' W	
Trail Creek Lookout		45° 41.165' N 113° 45.416' W	
Trail Creek Repeater	CMD 8	45° 42.215' N 113° 58.179' W	
Trail Creek Repeater	Stem Mountain	45° 27.545' N 113° 52.841' W	
Trail Creek Repeater		45° 55.992' N 113° 44.804' W	
Trail Creek Repeater	Tie Creek	45° 42.540' N 113° 44.322' W	
Trail Creek Staging Area		45° 41.635' N 113° 56.854' W	
Trail Creek Unimproved Landing Area		45° 39.680' N 113° 46.880' W	
Trail Creek Unimproved Landing Area		45° 40.241' N 113° 45.243' W	
Trail Creek Value at Risk	Hogan's Cabin	45° 42.804' N 113° 52.831' W	
Trail Creek Drop Point	70	45° 38.263' N 113° 40.794' W	
Trail Creek Drop Point	71	45° 37.404' N 113° 40.711' W	
Trail Creek Drop Point	71	45° 36.323' N 113° 41.098' W	

Flight Restriction Information
Alder Creek - 1/8950 - 12,000ft ceiling
Trail Creek - 1/8951 - 12,000ft ceiling



SA Blue Team
7/19/2021 0625
North American 1983 Datum. LatLong Grid

Fire perimeter updated from Acres from IR on 7/18/2021 2105

Scale: 1:54,688
1 inch equals 10 miles