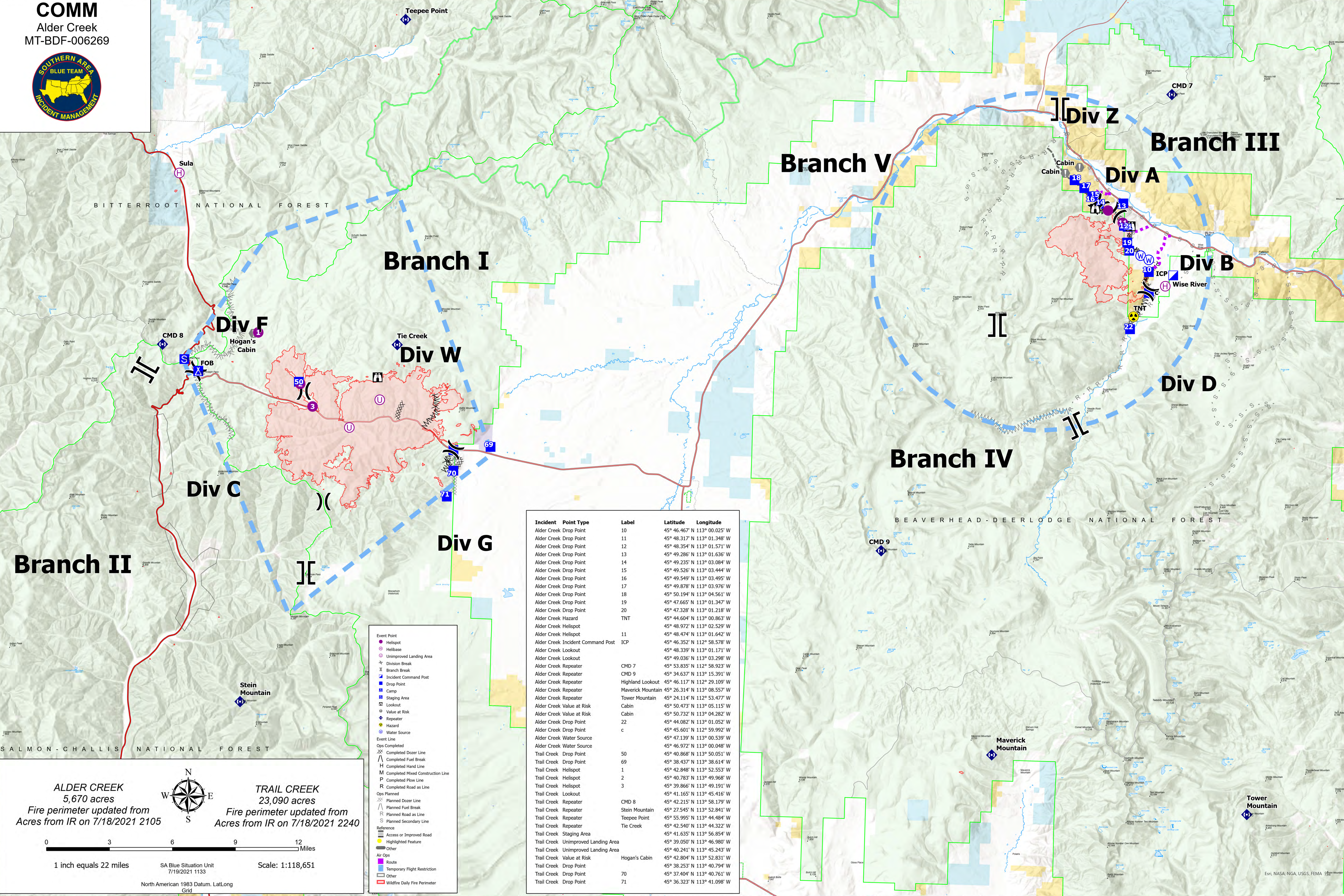


**COMM**  
Alder Creek  
MT-BDF-006269



**ALDER CREEK**  
5,670 acres  
Fire perimeter updated from Acres from IR on 7/18/2021 2105

**TRAIL CREEK**  
23,090 acres  
Fire perimeter updated from Acres from IR on 7/18/2021 2240

0 3 6 9 12 Miles

1 inch equals 22 miles

SA Blue Situation Unit  
7/19/2021 1133

Scale: 1:118,651

North American 1983 Datum, Lat/Long Grid

Event Point	Helibase
Unimproved Landing Area	Division Break
Branch Break	Incident Command Post
Drop Point	Camp
Staging Area	Lookout
Value at Risk	Repeater
Hazard	Water Source
Event Line	Ops Completed
Completed Dozer Line	Completed Fuel Break
Completed Hand Line	Completed Mixed Construction Line
Completed Pile Line	Completed Road as Line
Planned Dozer Line	Planned Fuel Break
Planned Road as Line	Planned Secondary Line
Reference	Access or Improved Road
Highlighted Feature	Other
Air Ops	Route
Temporary Flight Restriction	Other
Wildfire Daily Fire Perimeter	

Incident	Point Type	Label	Latitude	Longitude
Alder Creek	Drop Point	10	45° 46.467' N	113° 00.025' W
Alder Creek	Drop Point	11	45° 48.317' N	113° 01.348' W
Alder Creek	Drop Point	12	45° 48.354' N	113° 01.571' W
Alder Creek	Drop Point	13	45° 49.286' N	113° 01.636' W
Alder Creek	Drop Point	14	45° 49.235' N	113° 03.084' W
Alder Creek	Drop Point	15	45° 49.526' N	113° 03.444' W
Alder Creek	Drop Point	16	45° 49.549' N	113° 03.495' W
Alder Creek	Drop Point	17	45° 49.878' N	113° 03.976' W
Alder Creek	Drop Point	18	45° 50.194' N	113° 04.561' W
Alder Creek	Drop Point	19	45° 47.665' N	113° 01.347' W
Alder Creek	Drop Point	20	45° 47.328' N	113° 01.218' W
Alder Creek	Hazard	TNT	45° 44.604' N	113° 00.863' W
Alder Creek	Helispot		45° 48.972' N	113° 02.529' W
Alder Creek	Helispot	11	45° 48.474' N	113° 01.642' W
Alder Creek	Incident Command Post	ICP	45° 46.352' N	112° 58.578' W
Alder Creek	Lookout		45° 48.339' N	113° 01.171' W
Alder Creek	Lookout		45° 49.036' N	113° 03.298' W
Alder Creek	Repeater	CMD 7	45° 53.835' N	112° 58.923' W
Alder Creek	Repeater	CMD 9	45° 34.637' N	113° 15.391' W
Alder Creek	Repeater	Highland Lookout	45° 46.117' N	112° 29.109' W
Alder Creek	Repeater	Maverick Mountain	45° 26.314' N	113° 08.557' W
Alder Creek	Repeater	Tower Mountain	45° 24.114' N	112° 53.477' W
Alder Creek	Value at Risk	Cabin	45° 50.473' N	113° 05.115' W
Alder Creek	Value at Risk	Cabin	45° 50.732' N	113° 04.282' W
Alder Creek	Drop Point	22	45° 44.082' N	113° 01.052' W
Alder Creek	Drop Point	c	45° 45.601' N	112° 59.992' W
Alder Creek	Water Source		45° 47.139' N	113° 00.539' W
Alder Creek	Water Source		45° 46.972' N	113° 00.048' W
Trail Creek	Drop Point	50	45° 40.868' N	113° 50.051' W
Trail Creek	Drop Point	69	45° 38.437' N	113° 38.614' W
Trail Creek	Helispot	1	45° 42.848' N	113° 52.553' W
Trail Creek	Helispot	2	45° 40.783' N	113° 49.968' W
Trail Creek	Helispot	3	45° 39.866' N	113° 49.191' W
Trail Creek	Lookout		45° 41.165' N	113° 45.416' W
Trail Creek	Repeater	CMD 8	45° 42.215' N	113° 58.179' W
Trail Creek	Repeater	Stein Mountain	45° 27.545' N	113° 52.841' W
Trail Creek	Repeater	Teepee Point	45° 55.995' N	113° 44.484' W
Trail Creek	Repeater	Tie Creek	45° 42.540' N	113° 44.322' W
Trail Creek	Staging Area		45° 41.635' N	113° 56.854' W
Trail Creek	Unimproved Landing Area		45° 39.050' N	113° 46.980' W
Trail Creek	Unimproved Landing Area		45° 40.241' N	113° 45.243' W
Trail Creek	Value at Risk	Hogan's Cabin	45° 42.804' N	113° 52.831' W
Trail Creek	Drop Point		45° 38.253' N	113° 40.794' W
Trail Creek	Drop Point	70	45° 37.404' N	113° 40.761' W
Trail Creek	Drop Point	71	45° 36.323' N	113° 41.098' W