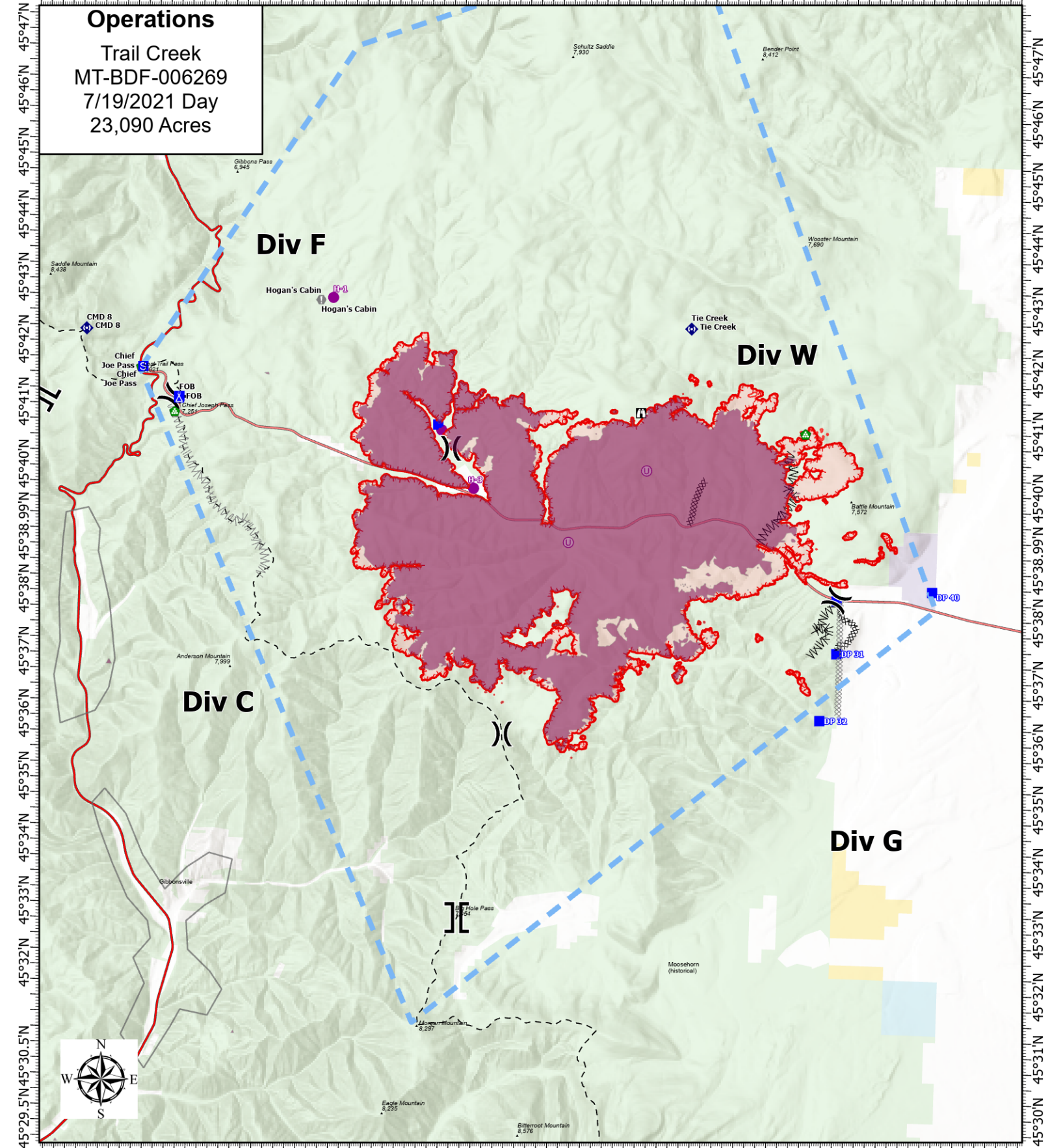


113°59.5'W 113°57.5'W 113°56'W 113°54'W 113°52'W 113°50'W 113°48'W 113°46'W 113°44'W 113°42'W 113°40'W 113°38'W



Operations
 Trail Creek
 MT-BDF-006269
 7/19/2021 Day
 23,090 Acres

Div F

Div W

Div C

Div G



Acres from IR on
 7/18/2021 2240

0 0.8 1.7 2.5
 Miles

1 inch equals 28 miles
 Scale: 1:146,250

- xxx Completed Dozer Line
- ww Completed Fuel Break
- xxx Planned Dozer Line
- ww Planned Fuel Break
- Temporary Flight Restriction
- Fire Edge
- Other
- ▭ Wildfire Daily Fire Perimeter
- Helispot
- ⊕ Unimproved Landing Area
-) (Division Break
-] [Branch Break
- Drop Point
- ⊗ Camp
- Ⓢ Staging Area