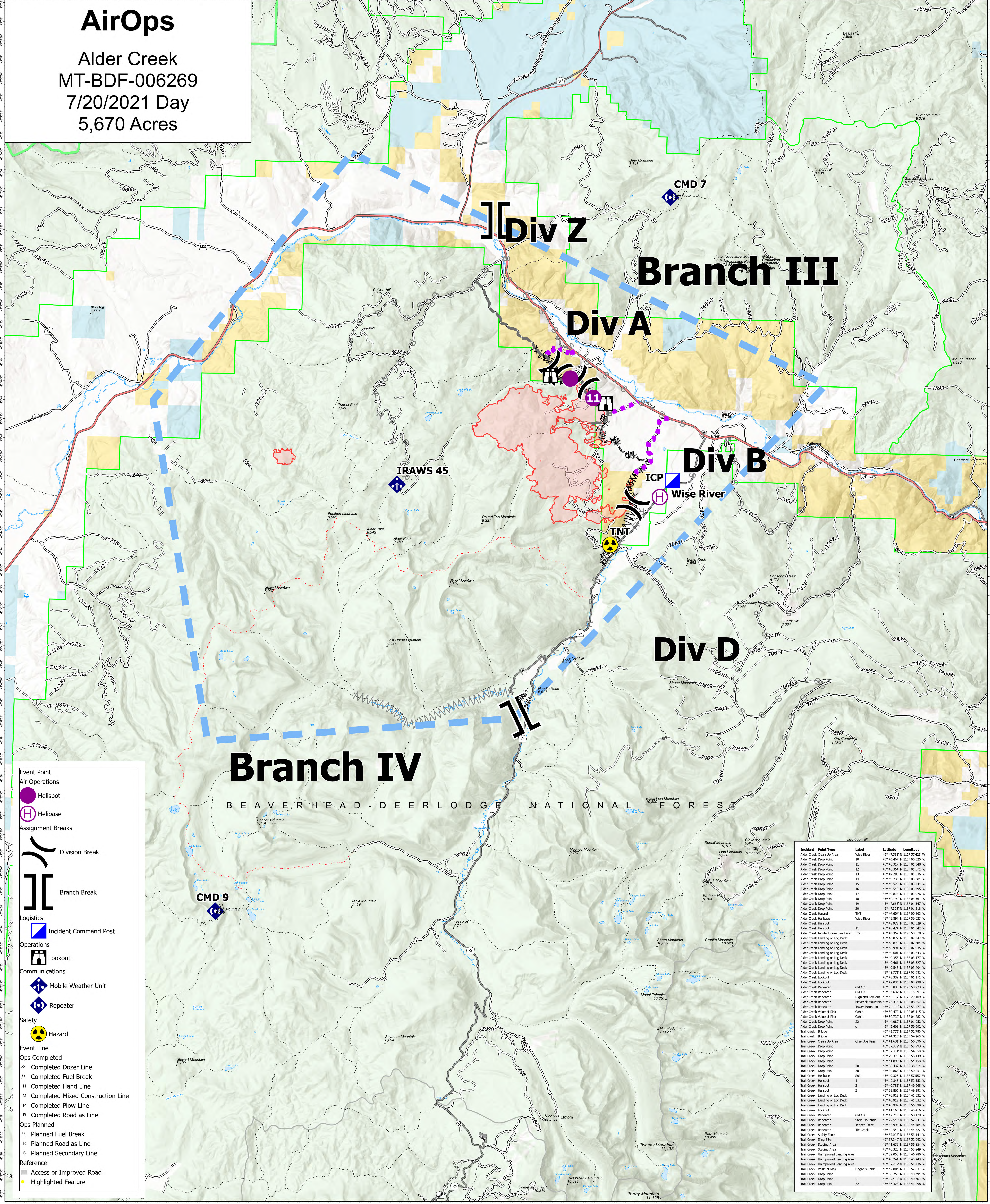


AirOps

Alder Creek
MT-BDF-006269
7/20/2021 Day
5,670 Acres

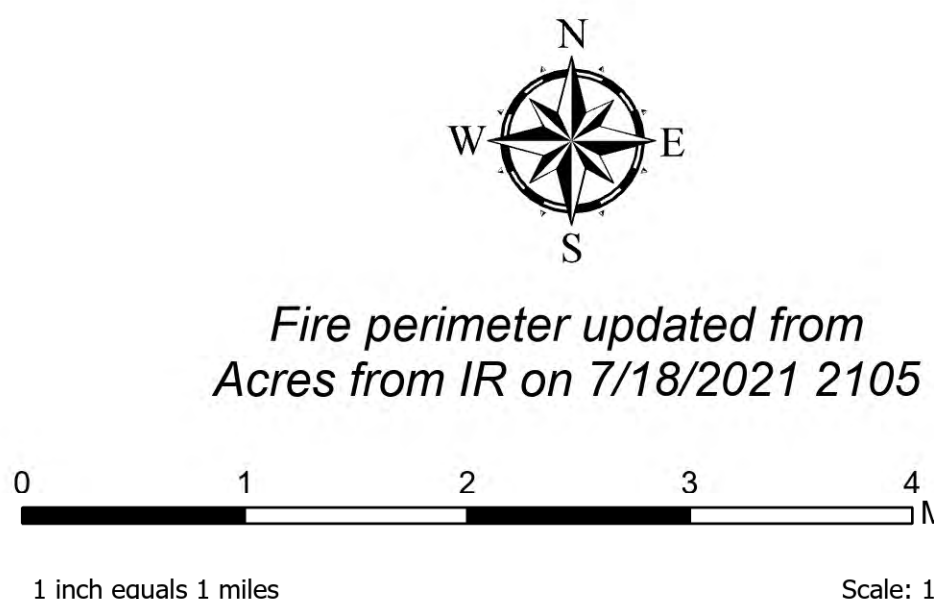


Incident Point Type	Label	Latitude	Longitude
Alder Creek Clean Up Area	Wise River	45° 47.581' N 113° 57.427' W	
Alder Creek Drop Point	10	45° 46.467' N 113° 00.025' W	
Alder Creek Drop Point	11	45° 46.317' N 113° 01.346' W	
Alder Creek Drop Point	12	45° 46.354' N 113° 01.571' W	
Alder Creek Drop Point	13	45° 46.286' N 113° 01.636' W	
Alder Creek Drop Point	14	45° 46.235' N 113° 03.085' W	
Alder Creek Drop Point	15	45° 46.526' N 113° 03.444' W	
Alder Creek Drop Point	16	45° 46.549' N 113° 03.495' W	
Alder Creek Drop Point	17	45° 46.876' N 113° 03.190' W	
Alder Creek Drop Point	18	45° 50.194' N 113° 04.561' W	
Alder Creek Drop Point	19	45° 47.665' N 113° 01.347' W	
Alder Creek Drop Point	20	45° 46.338' N 113° 01.218' W	
Alder Creek Hazard	TNT	45° 44.604' N 113° 00.863' W	
Alder Creek Helibase	Wise River	45° 46.897' N 113° 59.033' W	
Alder Creek Helispot		45° 46.972' N 113° 02.529' W	
Alder Creek Helispot		45° 48.474' N 113° 01.642' W	
Alder Creek Incident Command Post	ICP	45° 46.352' N 113° 58.578' W	
Alder Creek Landing or Log Deck		45° 48.877' N 113° 02.747' W	
Alder Creek Landing or Log Deck		45° 48.879' N 113° 02.784' W	
Alder Creek Landing or Log Deck		45° 48.991' N 113° 02.825' W	
Alder Creek Landing or Log Deck		45° 49.021' N 113° 03.045' W	
Alder Creek Landing or Log Deck		45° 49.398' N 113° 03.177' W	
Alder Creek Landing or Log Deck		45° 49.461' N 113° 03.327' W	
Alder Creek Landing or Log Deck		45° 49.545' N 113° 03.494' W	
Alder Creek Landing or Log Deck		45° 48.771' N 113° 01.081' W	
Alder Creek Lookout		45° 48.339' N 113° 01.171' W	
Alder Creek Lookout		45° 49.036' N 113° 03.288' W	
Alder Creek Repeater	CMD 7	45° 53.835' N 113° 58.923' W	
Alder Creek Repeater	CMD 9	45° 36.027' N 113° 25.201' W	
Alder Creek Repeater	Highland Lookout	45° 46.117' N 113° 25.105' W	
Alder Creek Repeater	Maverick Mountain	45° 26.114' N 113° 08.557' W	
Alder Creek Repeater	Tower Mountain	45° 24.145' N 113° 03.677' W	
Alder Creek Value at Risk	Cabin	45° 50.473' N 113° 05.115' W	
Alder Creek Value at Risk	Cabin	45° 50.732' N 113° 04.282' W	
Alder Creek Drop Point	S&B	45° 44.922' N 113° 56.095' W	
Alder Creek Drop Point	c	45° 45.601' N 113° 59.962' W	
Trail Creek	Bridge	45° 42.772' N 113° 52.786' W	
Trail Creek	Bridge	45° 44.315' N 113° 54.257' W	
Trail Creek Clean Up Area	Chief Joe Pass	45° 41.631' N 113° 56.896' W	
Trail Creek Drop Point		45° 37.362' N 113° 53.993' W	
Trail Creek Drop Point		45° 37.361' N 113° 54.126' W	
Trail Creek Drop Point		45° 29.372' N 113° 58.149' W	
Trail Creek Drop Point		45° 44.866' N 113° 03.188' W	
Trail Creek Drop Point		45° 38.437' N 113° 38.614' W	
Trail Creek Drop Point		45° 40.868' N 113° 50.051' W	
Trail Creek Helibase		45° 44.225' N 113° 42.794' W	
Trail Creek Helispot	1	45° 42.948' N 113° 52.553' W	
Trail Creek Helispot	2	45° 40.783' N 113° 49.968' W	
Trail Creek Helispot	3	45° 39.866' N 113° 49.191' W	
Trail Creek Landing or Log Deck		45° 40.912' N 113° 41.632' W	
Trail Creek Landing or Log Deck		45° 40.912' N 113° 41.632' W	
Trail Creek Landing or Log Deck		45° 40.912' N 113° 41.632' W	
Trail Creek Lookout		45° 41.165' N 113° 45.416' W	
Trail Creek Repeater	CMD 8	45° 42.215' N 113° 58.179' W	
Trail Creek Repeater	Shaw Mountain	45° 24.145' N 113° 03.677' W	
Trail Creek Repeater	Tepee Point	45° 55.995' N 113° 44.484' W	
Trail Creek Repeater	Tie Creek	45° 42.540' N 113° 44.322' W	
Trail Creek Safety Zone		45° 37.007' N 113° 54.141' W	
Trail Creek Sing Site		45° 37.340' N 113° 52.092' W	
Trail Creek Staging Area		45° 42.835' N 113° 56.894' W	
Trail Creek Staging Area		45° 42.835' N 113° 56.894' W	
Trail Creek Unimproved Landing Area		45° 29.059' N 113° 46.980' W	
Trail Creek Unimproved Landing Area		45° 44.241' N 113° 04.243' W	
Trail Creek Unimproved Landing Area		45° 37.287' N 113° 51.436' W	
Trail Creek Value at Risk	Hogan's Cabin	45° 42.804' N 113° 52.831' W	
Trail Creek Drop Point		45° 43.225' N 113° 42.794' W	
Trail Creek Drop Point		45° 37.404' N 113° 40.761' W	
Trail Creek Drop Point		45° 36.323' N 113° 41.098' W	

Flight Restriction Information
Alder Creek - 1/2315 - 12,500ft ceiling
Trail Creek - 1/2310 - 12,500ft ceiling



SA Blue Team
7/20/2021 0933
North American 1983 Datum. LatLong Grid



Fire perimeter updated from
Acres from IR on 7/18/2021 2105