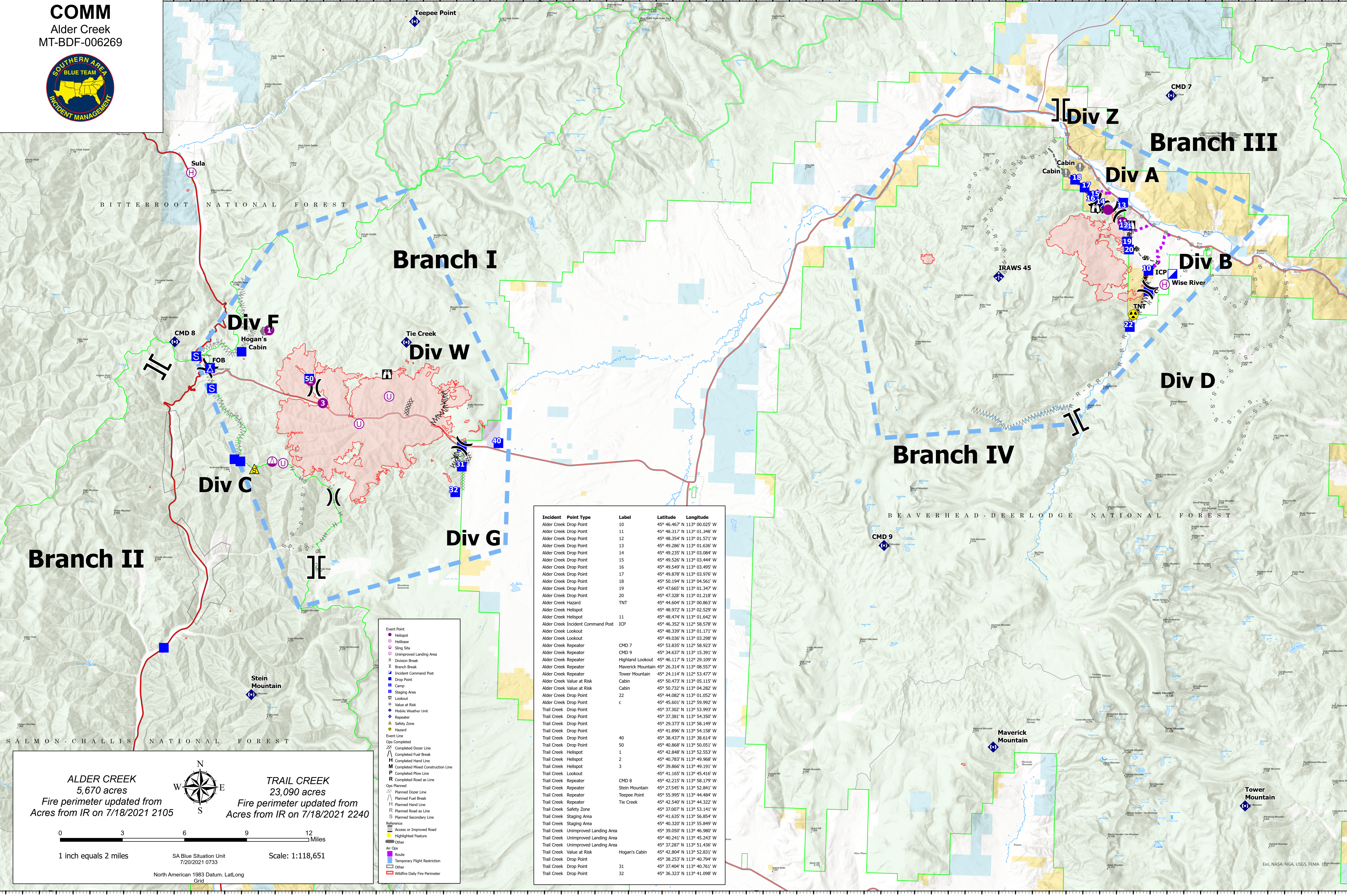


COMM
Alder Creek
MT-BDF-006269



Branch II

Branch I

Branch IV

Branch III

Div C

Div F

Div W

Div B

Div A

Div D

ALDER CREEK
5,670 acres
Fire perimeter updated from Acres from IR on 7/18/2021 2105

TRAIL CREEK
23,090 acres
Fire perimeter updated from Acres from IR on 7/18/2021 2240

0 3 6 9 12 Miles
1 inch equals 2 miles
SA Blue Situation Unit
7/20/2021 0733
Scale: 1:118,651
North American 1983 Datum, Lat/Long Grid

- Event Point
- Helispot
- Helibase
- Sling Site
- Unimproved Landing Area
- X Division Break
- || Branch Break
- Incident Command Post
- Drop Point
- Camp
- Staging Area
- Lookout
- Value at Risk
- Value at Risk
- ◆ Mobile Weather Unit
- ◆ Repeater
- ◆ Safety Zone
- ◆ Hazard
- Event Line
- Ops Completed
- XX Completed Dozer Line
- Completed Fuel Break
- Completed Hand Line
- Completed Mixed Construction Line
- P Completed Flow Line
- R Completed Road as Line
- Ops Planned
- Planned Dozer Line
- Planned Fuel Break
- Planned Hand Line
- R Planned Road as Line
- S Planned Secondary Line
- Reference
- Access or Improved Road
- Highlighted Feature
- Other
- Air Ops
- Route
- Temporary Flight Restriction
- Other
- Wildfire Daily Fire Perimeter

Incident	Point Type	Label	Latitude	Longitude
Alder Creek	Drop Point	10	45° 46.467' N	113° 00.025' W
Alder Creek	Drop Point	11	45° 48.317' N	113° 01.348' W
Alder Creek	Drop Point	12	45° 48.354' N	113° 01.571' W
Alder Creek	Drop Point	13	45° 49.286' N	113° 01.636' W
Alder Creek	Drop Point	14	45° 49.235' N	113° 03.084' W
Alder Creek	Drop Point	15	45° 49.526' N	113° 03.444' W
Alder Creek	Drop Point	16	45° 49.549' N	113° 03.495' W
Alder Creek	Drop Point	17	45° 49.878' N	113° 03.976' W
Alder Creek	Drop Point	18	45° 50.194' N	113° 04.561' W
Alder Creek	Drop Point	19	45° 47.665' N	113° 01.347' W
Alder Creek	Drop Point	20	45° 47.328' N	113° 01.218' W
Alder Creek	Hazard	TNT	45° 44.604' N	113° 00.863' W
Alder Creek	Helispot		45° 48.972' N	113° 02.529' W
Alder Creek	Helispot		45° 48.474' N	113° 01.642' W
Alder Creek	Incident Command Post	ICP	45° 46.352' N	112° 58.578' W
Alder Creek	Lookout		45° 48.339' N	113° 01.171' W
Alder Creek	Lookout		45° 49.036' N	113° 03.298' W
Alder Creek	Repeater	CMD 7	45° 53.835' N	112° 58.923' W
Alder Creek	Repeater	CMD 9	45° 34.637' N	113° 15.391' W
Alder Creek	Repeater	Highland Lookout	45° 46.117' N	112° 29.109' W
Alder Creek	Repeater	Maverick Mountain	45° 26.314' N	113° 08.557' W
Alder Creek	Repeater	Tower Mountain	45° 24.114' N	112° 53.477' W
Alder Creek	Value at Risk	Cabin	45° 50.473' N	113° 05.115' W
Alder Creek	Value at Risk	Cabin	45° 50.732' N	113° 04.282' W
Alder Creek	Drop Point	22	45° 44.082' N	113° 01.052' W
Alder Creek	Drop Point	c	45° 45.601' N	112° 59.992' W
Trail Creek	Drop Point		45° 37.302' N	113° 53.993' W
Trail Creek	Drop Point		45° 37.381' N	113° 54.350' W
Trail Creek	Drop Point		45° 29.373' N	113° 58.149' W
Trail Creek	Drop Point		45° 41.896' N	113° 54.158' W
Trail Creek	Drop Point		45° 38.437' N	113° 38.614' W
Trail Creek	Drop Point	40	45° 40.868' N	113° 50.051' W
Trail Creek	Helispot	1	45° 42.848' N	113° 52.553' W
Trail Creek	Helispot	2	45° 40.783' N	113° 49.968' W
Trail Creek	Helispot	3	45° 39.866' N	113° 49.191' W
Trail Creek	Repeater		45° 41.165' N	113° 45.416' W
Trail Creek	Repeater		45° 27.545' N	113° 58.179' W
Trail Creek	Repeater		45° 55.995' N	113° 52.941' W
Trail Creek	Repeater		45° 42.540' N	113° 44.322' W
Trail Creek	Safety Zone		45° 37.007' N	113° 53.141' W
Trail Creek	Staging Area		45° 41.635' N	113° 56.854' W
Trail Creek	Staging Area		45° 40.320' N	113° 55.849' W
Trail Creek	Unimproved Landing Area		45° 39.050' N	113° 46.980' W
Trail Creek	Unimproved Landing Area		45° 40.241' N	113° 45.243' W
Trail Creek	Unimproved Landing Area		45° 37.287' N	113° 51.436' W
Trail Creek	Value at Risk	Hogan's Cabin	45° 42.804' N	113° 52.821' W
Trail Creek	Drop Point		45° 38.253' N	113° 40.794' W
Trail Creek	Drop Point	31	45° 37.404' N	113° 40.761' W
Trail Creek	Drop Point	32	45° 36.323' N	113° 41.098' W